



## UK Office

### Everest Biotech Ltd

Cherwell Innovation Centre  
77 Heyford Park  
Upper Heyford  
Oxfordshire  
OX25 5HD  
UK

Enquiries:

[info@everestbiotech.com](mailto:info@everestbiotech.com)

Sales:

[sales@everestbiotech.com](mailto:sales@everestbiotech.com)

Tech support:

[support@everestbiotech.com](mailto:support@everestbiotech.com)

Tel: +44 (0)1869 238326

[www.everestbiotech.com](http://www.everestbiotech.com)

**Research Use Only. Not for  
diagnostic or therapeutic use.**

## EB06237-B - Goat Anti-KPNA3 / IPOA4, Biotinylated Antibody

Size: 100µg specific antibody in 200µl



### Target Protein

**Principal Names:** KPNA3, karyopherin subunit alpha 3, IPOA4, SRP1, SRP1gamma, SRP4, hSRP1, SRP1-gamma, importin alpha 4, importin alpha Q2, importin alpha-3, importin subunit alpha-3, importin-alpha-Q2, karyopherin alpha 3 (importin alpha 4), karyopherin subunit alpha-3, qip2

**Official Symbol:** KPNA3

**Accession Number(s):** NP\_002258.2

**Human GeneID(s):** [3839](#)

**Non-Human GeneID(s):** 16648 (mouse), 361055 (rat)

### Immunogen

Peptide with sequence CDPTANLQTKEFNF., from the C Terminus of the protein sequence according to NP\_002258.2.

Please note the [peptide](#) is available for sale.

### Purification and Storage

Purified from goat serum by ammonium sulphate precipitation followed by antigen affinity chromatography using the immunizing peptide.

Supplied at 0.5 mg/ml in Tris saline, 0.02% sodium azide, pH7.3 with 0.5% bovine serum albumin.

Aliquot and store at -20°C. Minimize freezing and thawing.

### Applications Tested

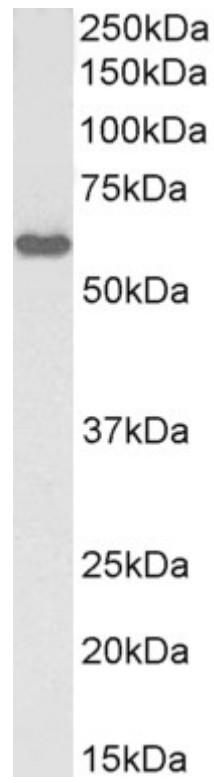
**Peptide ELISA:** antibody detection limit dilution 1:32000.

**Western blot:** Approx 55kDa band observed in Rat Testis lysates (calculated MW of 57.8kDa according to Human NP\_002258.2 and Rat NP\_001014792.1). See non-biotinylated parental product's datasheet for further QC data. Recommended concentration: 1-3µg/ml.

### Species Reactivity

**Tested:** Human, Mouse, Rat

**Expected from sequence similarity:** Human, Mouse, Rat, Dog, Cow



Biotinylated EB06237 (1 $\mu$ g/ml) staining of Rat Testis lysate (35 $\mu$ g protein in RIPA buffer), exactly mirroring its parental non-biotinylated product. Primary incubation was 1 hour. Detected by chemiluminescence, using streptavidin-HRP and using NAP blocker as a substitute for skimmed milk.