



International Office

Everest Biotech Ltd

Vector Laboratories, Inc.
6737 Mowry Ave
Newark, CA 94560
United States

Customer Service:

customerservice@vectorlabs.com

Technical Service:

technical@vectorlabs.com

Tel: +1 (800) 227-6666

www.everestbiotech.com

**Research Use Only. Not for
diagnostic or therapeutic use.**

EB09037 - Goat Anti-KRT13 Antibody

Size: 100µg specific antibody in 200µl



Target Protein

Principal Names: KRT13, keratin 13, CK13, K13, MGC161462, MGC3781, cytokeratin 13, keratin, type I cytoskeletal 13

Official Symbol: KRT13

Accession Number(s): NP_705694.2

Human GeneID(s): [3860](#)

Important Comments: This antibody is expected to recognize the reported isoform a (NP_002265.2) only.

Immunogen

Peptide with sequence C-TSNASGRRTSDVRRP, from the C Terminus of the protein sequence according to NP_705694.2.

Please note the [peptide](#) is available for sale.

Purification and Storage

Purified from goat serum by ammonium sulphate precipitation followed by antigen affinity chromatography using the immunizing peptide.

Supplied at 0.5 mg/ml in Tris saline, 0.02% sodium azide, pH7.3 with 0.5% bovine serum albumin.

Aliquot and store at -20°C. Minimize freezing and thawing.

Applications Tested

Peptide ELISA: antibody detection limit dilution 1:128000.

Western blot: Approx. 55kDa band observed in Human Lung, Skeletal Muscle and Skin lysates (calculated MW of 49.6kDa according to NP_705694.2). The observed molecular weight corresponds to earlier findings in literature with different antibodies (Sajjan, Microbiology. 2003 Apr;149(Pt 4):961-71.; PMID: 12686638). Recommended concentration: 0.1-0.3µg/ml.

IHC: In paraffin embedded Human Tonsil shows strong layered, filamentous staining. Recommended concentration, 2-4µg/ml.

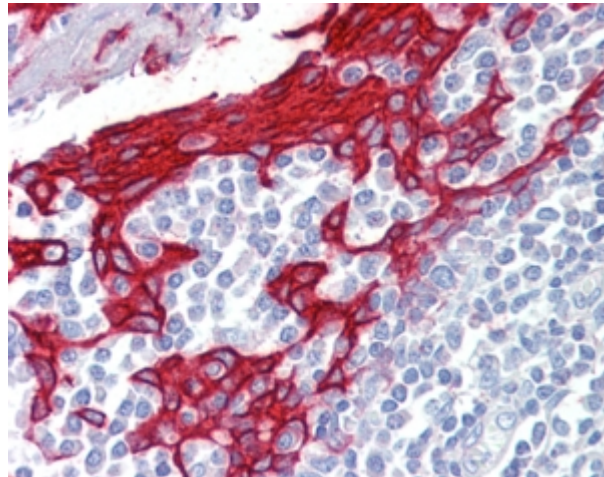
Species Reactivity

Tested: Human

Expected from sequence similarity: Human



EB09037 (0.1µg/ml) staining of Human Lung lysate (35µg protein in RIPA buffer). Primary incubation was 1 hour.
Detected by chemiluminescence.



EB09037 (2.5µg/ml) staining of paraffin embedded Human Tonsil. Steamed antigen retrieval with citrate buffer
pH 6, AP-staining.