



International Office

Everest Biotech Ltd

Vector Laboratories, Inc.
6737 Mowry Ave
Newark, CA 94560
United States

Customer Service:

customerservice@vectorlabs.com

Technical Service:

technical@vectorlabs.com

Tel: +1 (800) 227-6666

www.everestbiotech.com

**Research Use Only. Not for
diagnostic or therapeutic use.**

EB07858-T - Goat Anti-KU70 / XRCC6 Antibody - Trial

Size: 20µg specific antibody in 40µl



Target Protein

Principal Names: XRCC6, KU70, X-ray repair complementing defective repair in Chinese hamster cells 6 (Ku autoantigen, 70kDa), CTC75, CTCBF, G22P1, ML8, TLAA, ATP-dependent DNA helicase II, 70 kDa subunit, CTC box binding factor 75 kDa subunit, Ku autoantigen p70 subunit, OTTHUMP00000028581, thyroid autoantigen 70kD (Ku antigen), thyroid autoantigen 70kDa (Ku antigen), thyroid-lupus autoantigen p70

Official Symbol: XRCC6

Accession Number(s): NP_001460.1

Human GenelD(s): [2547](#)

Immunogen

Peptide with sequence YKTEGDDEEAEEEQ-C, from the N Terminus of the protein sequence according to NP_001460.1.

Please note the [peptide](#) is available for sale.

Purification and Storage

Purified from goat serum by ammonium sulphate precipitation followed by antigen affinity chromatography using the immunizing peptide.

Supplied at 0.5 mg/ml in Tris saline, 0.02% sodium azide, pH7.3 with 0.5% bovine serum albumin.

Aliquot and store at -20°C. Minimize freezing and thawing.

Applications Tested

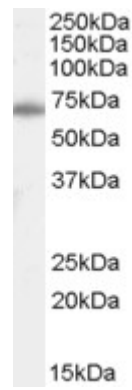
Peptide ELISA: antibody detection limit dilution 1:2000.

Western blot: Approx 70kDa band observed in lysates of cell lines A431, HeLa and HepG2 (calculated MW of 69.8kDa according to NP_001460.1). In transfected HEK293 transiently expressing KU70 a band of approx. 70kDa is observed. This band is not observed in the non-transfected HEK293. Recommended concentration: 0.1-0.3µg/ml.

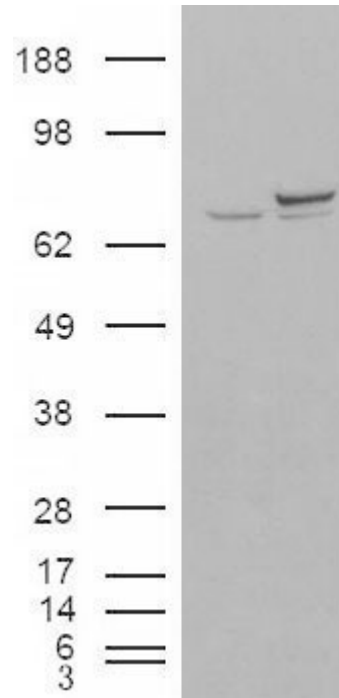
Species Reactivity

Tested: Human

Expected from sequence similarity: Human



EB07858 (0.1µg/ml) staining of HeLa cell lysate (35µg protein in RIPA buffer). Primary incubation was 1 hour.
Detected by chemiluminescence.



HEK293 overexpressing KU70 (RC204048) and probed with EB07858 (mock transfection in first lane), tested by
Origene.