



UK Office

Everest Biotech Ltd

Cherwell Innovation Centre
77 Heyford Park
Upper Heyford
Oxfordshire
OX25 5HD
UK

Enquiries:

info@everestbiotech.com

Sales:

sales@everestbiotech.com

Tech support:

support@everestbiotech.com

Tel: +44 (0)1869 238326

www.everestbiotech.com

**Research Use Only. Not for
diagnostic or therapeutic use.**

EB07209-T - Goat Anti-Ku80 / XRCC5 Antibody - Trial

Size: 20µg specific antibody in 40µl



Target Protein

Principal Names: XRCC5, KU80, X-ray repair complementing defective repair in Chinese hamster cells 5 (double-strand-break rejoining Ku autoantigen, 80kDa), HGNC:12833, KARP-1, KARP1, Ku86, NFIV, ATP-dependent DNA helicase II, DNA repair protein XRCC5, Ku86 autoantigen related protein 1, Ku autoantigen, 80kD, X-ray repair, complementing defective, repair in Chinese hamster

Official Symbol: XRCC5

Accession Number(s): NP_066964.1

Human GeneID(s): [7520](#)

Immunogen

Peptide with sequence C-SLAKKDEKDTLED, from the internal region of the protein sequence according to NP_066964.1.

Please note the [peptide](#) is available for sale.

Purification and Storage

Purified from goat serum by ammonium sulphate precipitation followed by antigen affinity chromatography using the immunizing peptide.

Supplied at 0.5 mg/ml in Tris saline, 0.02% sodium azide, pH7.3 with 0.5% bovine serum albumin.

Aliquot and store at -20°C. Minimize freezing and thawing.

Applications Tested

Peptide ELISA: antibody detection limit dilution 1:16000.

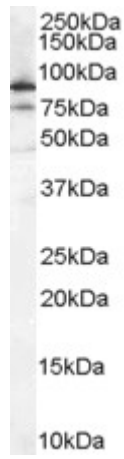
Western blot: Approx 80-85kDa band observed in lysates of HeLa (calculated MW of 82.7kDa according to NP_066964.1). Recommended concentration: 0.1-0.3µg/ml. An additional band of 75kDa was observed consistent with products from other sources.

IHC: Paraffin embedded Human Spleen. Recommended concentration: 5µg/ml.

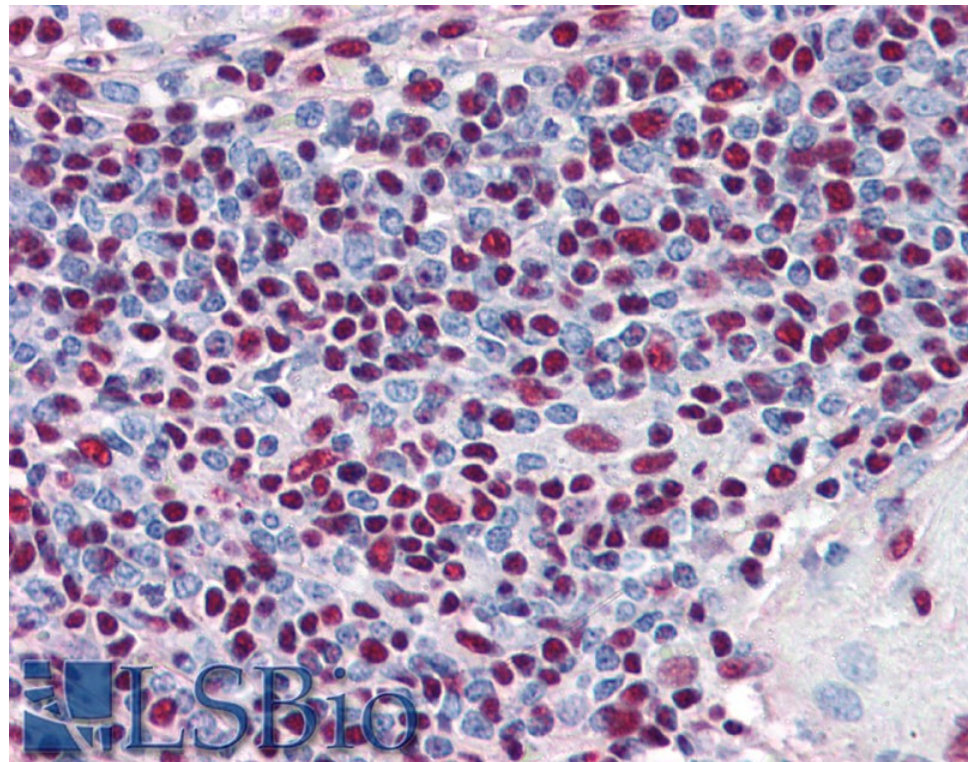
Species Reactivity

Tested: Human

Expected from sequence similarity: Human



EB07209 (0.1 μ g/ml) staining of HeLa cell lysate (35 μ g protein in RIPA buffer). Primary incubation was 1 hour. Detected by chemiluminescence.



EB07209 (5 μ g/ml) staining of paraffin embedded Human Spleen. Steamed antigen retrieval with citrate buffer pH 6, AP-staining.