



## International Office

### Everest Biotech Ltd

Vector Laboratories, Inc.  
6737 Mowry Ave  
Newark, CA 94560  
United States

Customer Service:

[customerservice@vectorlabs.com](mailto:customerservice@vectorlabs.com)

Technical Service:

[technical@vectorlabs.com](mailto:technical@vectorlabs.com)

Tel: +1 (800) 227-6666

[www.everestbiotech.com](http://www.everestbiotech.com)

**Research Use Only. Not for  
diagnostic or therapeutic use.**

## EB12248 - Goat Anti-Lactadherin Antibody

Size: 100µg specific antibody in 200µl



### Target Protein

**Principal Names:** MFGE8, milk fat globule-EGF factor 8 protein, BA46, EDIL1, HMFG, HsT19888, MFG-E8, MFGM, OAcGD3S, SED1, SPAG10, hP47, O-acetyl disialoganglioside synthase, breast epithelial antigen BA46, lactadherin, medin, sperm associated antigen 10, sperm surface protein hP47

**Official Symbol:** MFGE8

**Accession Number(s):** NP\_005919.2; NP\_001108086.1

**Human GeneID(s):** [4240](#)

**Important Comments:** This antibody is expected to recognize both reported isoforms (NP\_005919.2; NP\_001108086.1).

### Immunogen

Peptide with sequence C-KNNSIPDKQITAS, from the internal region of the protein sequence according to NP\_005919.2; NP\_001108086.1.

Please note the [peptide](#) is available for sale.

### Purification and Storage

Purified from goat serum by ammonium sulphate precipitation followed by antigen affinity chromatography using the immunizing peptide.

Supplied at 0.5 mg/ml in Tris saline, 0.02% sodium azide, pH7.3 with 0.5% bovine serum albumin.

Aliquot and store at -20°C. Minimize freezing and thawing.

### Applications Tested

**Peptide ELISA:** antibody detection limit dilution 1:16000.

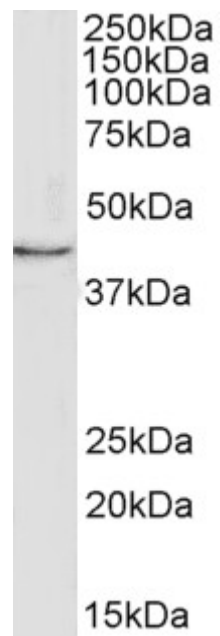
**Western blot:** Approx 40kDa band observed in lysates of cell line MCF7 (calculated MW of 43.1kDa according to NP\_005919.2, and 37.5 according to NP\_001108086.1 ).

Recommended concentration: 1-3µg/ml.

### Species Reactivity

**Tested:** Human

**Expected from sequence similarity:** Human



EB12248 (1µg/ml) staining of MCF7 cell lysate (35µg protein in RIPA buffer). Primary incubation was 1 hour.  
Detected by chemiluminescence.