

## UK Office

### Everest Biotech Ltd

Cherwell Innovation Centre  
77 Heyford Park  
Upper Heyford  
Oxfordshire  
OX25 5HD  
UK

Enquiries:

[info@everestbiotech.com](mailto:info@everestbiotech.com)

Sales:

[sales@everestbiotech.com](mailto:sales@everestbiotech.com)

Tech support:

[support@everestbiotech.com](mailto:support@everestbiotech.com)

Tel: +44 (0)1869 238326

[www.everestbiotech.com](http://www.everestbiotech.com)

**Research Use Only. Not for  
diagnostic or therapeutic use.**

## EB08570 - Goat Anti-Laforin (isoform a) Antibody

Size: 100µg specific antibody in 200µl



### Target Protein

**Principal Names:** epilepsy, progressive myoclonus type 2, Lafora disease (laforin), laforin, EPM2A, epilepsy, progressive myoclonus type 2A, Lafora disease (laforin), EPM2, MELF, glucan phosphatase, lafora PTPase, LAFPTPase

**Official Symbol:** EPM2A

**Accession Number(s):** NP\_005661.1

**Human GeneID(s):** [7957](#)

**Non-Human GeneID(s):** 13853 (mouse), 680683 (rat)

**Important Comments:** This antibody is expected to recognize isoform a (NP\_005661.1) only.

### Immunogen

Peptide with sequence C-EATGHTNEMKHTTD, from the internal region of the protein sequence according to NP\_005661.1.

Please note the [peptide](#) is available for sale.

### Purification and Storage

Purified from goat serum by ammonium sulphate precipitation followed by antigen affinity chromatography using the immunizing peptide.

Supplied at 0.5 mg/ml in Tris saline, 0.02% sodium azide, pH7.3 with 0.5% bovine serum albumin.

Aliquot and store at -20°C. Minimize freezing and thawing.

### Applications Tested

**Peptide ELISA:** antibody detection limit dilution 1:16000.

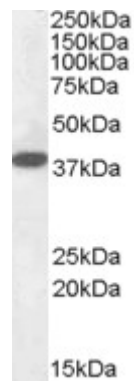
**Western blot:** Approx. 38kDa band observed in Human Brain (Cerebellum) lysates (calculated MW of 37.2kDa according to NP\_005661.1). Recommended concentration: 0.1-0.3µg/ml. Primary incubation was 1 hour.

**IHC:** Paraffin embedded Human Brain (Cerebellum) and Heart. Recommended concentration: 2.5µg/ml.

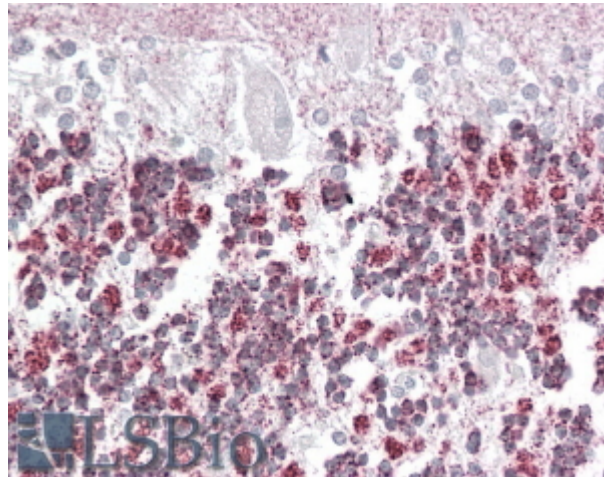
### Species Reactivity

**Tested:** Human

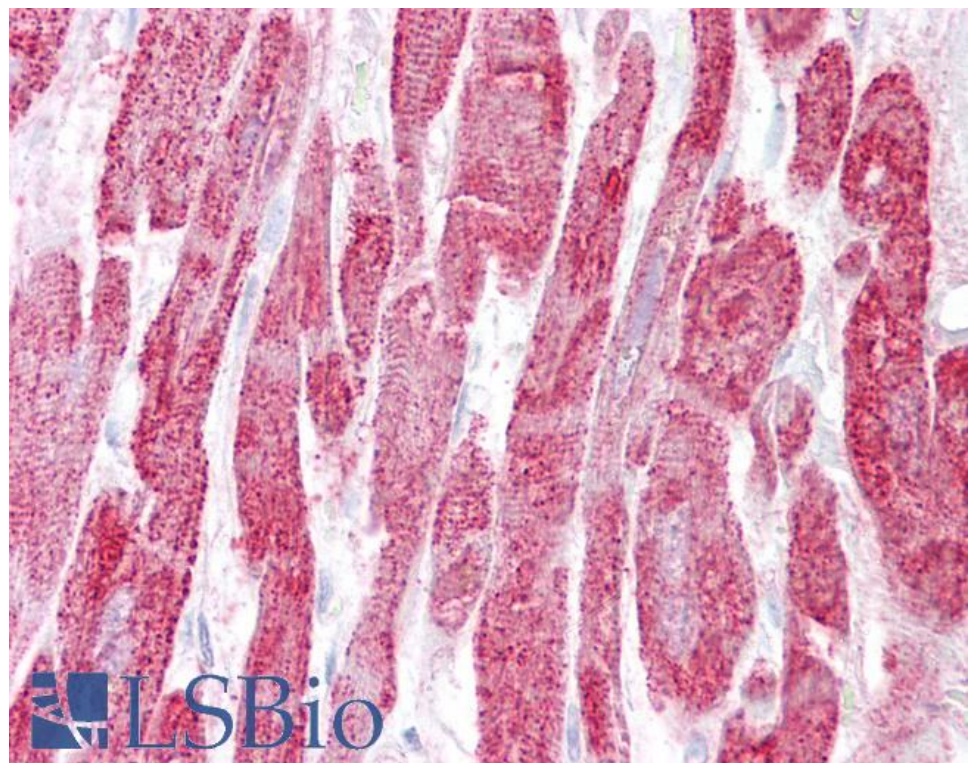
**Expected from sequence similarity:** Human, Mouse, Rat, Dog, Cow



EB08570 (0.1µg/ml) staining of Human Cerebellum lysate (35µg protein in RIPA buffer). Detected by chemiluminescence.



EB08570 (2.5µg/ml) staining of paraffin embedded Human Cerebellum. Steamed antigen retrieval with citrate buffer pH 6, AP-staining.



EB08570 (2.5µg/ml) staining of paraffin embedded Human Heart. Steamed antigen retrieval with citrate buffer pH 6, AP-staining.