



UK Office

Everest Biotech Ltd

Cherwell Innovation Centre
77 Heyford Park
Upper Heyford
Oxfordshire
OX25 5HD
UK

Enquiries:

info@everestbiotech.com

Sales:

sales@everestbiotech.com

Tech support:

support@everestbiotech.com

Tel: +44 (0)1869 238326

www.everestbiotech.com

**Research Use Only. Not for
diagnostic or therapeutic use.**

EB08570-B - Goat Anti-Laforin (isoform a), Biotinylated Antibody

Size: 100µg specific antibody in 200µl



Target Protein

Principal Names: EPM2A, epilepsy, progressive myoclonus type 2A, Lafora disease (laforin), EPM2, MELF, LAFPTase, epilepsy, progressive myoclonus type 2, Lafora disease (laforin), glucan phosphatase, lafora PTPase, laforin

Official Symbol: EPM2A

Accession Number(s): NP_005661.1

Human GeneID(s): [7957](#)

Non-Human GeneID(s): 13853 (mouse), 680683 (rat)

Important Comments: This antibody is expected to recognize isoform a (NP_005661.1) only.

Immunogen

Peptide with sequence C-EATGHTNEMKHTTD., from the internal region of the protein sequence according to NP_005661.1.

Please note the [peptide](#) is available for sale.

Purification and Storage

Purified from goat serum by ammonium sulphate precipitation followed by antigen affinity chromatography using the immunizing peptide.

Supplied at 0.5 mg/ml in Tris saline, 0.02% sodium azide, pH7.3 with 0.5% bovine serum albumin.

Aliquot and store at -20°C. Minimize freezing and thawing.

Applications Tested

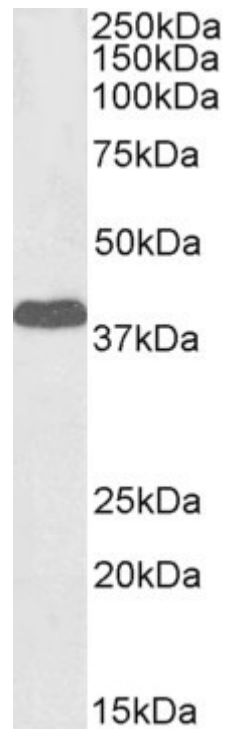
Peptide ELISA: antibody detection limit dilution 1:16000.

Western blot: Approx 38kDa band observed in Human Brain (Cerebellum) lysates (calculated MW of 37.2kDa according to NP_005661.1). See non-biotinylated parental product's datasheet for further QC data. Recommended concentration: 1-3µg/ml.

Species Reactivity

Tested: Human

Expected from sequence similarity: Human, Mouse, Rat, Dog, Cow



Biotinylated EB08570 (1 μ g/ml) staining of Human Cerebellum lysate (35 μ g protein in RIPA buffer), exactly mirroring its parental non-biotinylated product. Primary incubation was 1 hour. Detected by chemiluminescence, using streptavidin-HRP and using NAP blocker as a substitute for skimmed milk.