



UK Office

Everest Biotech Ltd

Cherwell Innovation Centre
77 Heyford Park
Upper Heyford
Oxfordshire
OX25 5HD
UK

Enquiries:

info@everestbiotech.com

Sales:

sales@everestbiotech.com

Tech support:

support@everestbiotech.com

Tel: +44 (0)1869 238326

www.everestbiotech.com

**Research Use Only. Not for
diagnostic or therapeutic use.**

EB13056 - Goat Anti-LAG3 / CD223 Antibody

Size: 100µg specific antibody in 200µl



Target Protein

Principal Names: LAG3, lymphocyte activating 3, CD223, lymphocyte-activation gene 3

Official Symbol: LAG3

Accession Number(s): NP_002277.4

Human GeneID(s): [3902](#)

Important Comments: This antibody is expected to recognize the extra-cellular domain.

Immunogen

Peptide with sequence EDVSQAQAGTYTCH, from the internal region of the protein sequence according to NP_002277.4.

Please note the [peptide](#) is available for sale.

Purification and Storage

Purified from goat serum by ammonium sulphate precipitation followed by antigen affinity chromatography using the immunizing peptide.

Supplied at 0.5 mg/ml in Tris saline, 0.02% sodium azide, pH7.3 with 0.5% bovine serum albumin.

Aliquot and store at -20°C. Minimize freezing and thawing.

Applications Tested

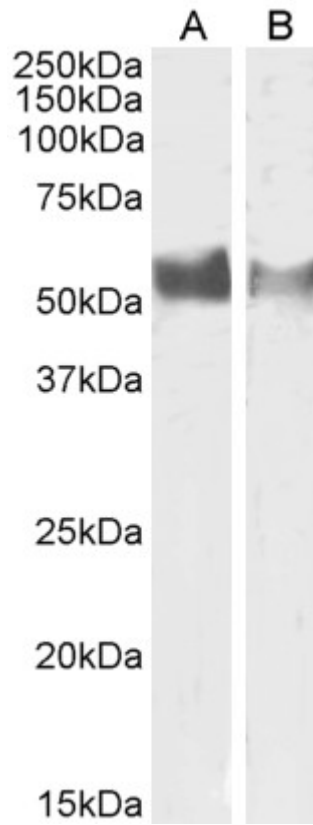
Peptide ELISA: antibody detection limit dilution 1:2000.

Western blot: Approx 55kDa band observed in Human Lymph Node and Tonsil lysates (calculated MW of 57.4kDa according to NP_002277.4). Recommended concentration: 0.3-1µg/ml.

Species Reactivity

Tested: Human

Expected from sequence similarity: Human



EB13056 (1 μ g/ml) staining of Human Lymph Node (A) and (0.5 μ g/ml) Tonsil (B) lysate (35 μ g protein in RIPA buffer). Primary incubation was 1 hour. Detected by chemiluminescence.