



International Office

Everest Biotech Ltd

Vector Laboratories, Inc.
6737 Mowry Ave
Newark, CA 94560
United States

Customer Service:

customerservice@vectorlabs.com

Technical Service:

technical@vectorlabs.com

Tel: +1 (800) 227-6666

www.everestbiotech.com

**Research Use Only. Not for
diagnostic or therapeutic use.**

EB09844 - Goat Anti-LAIR1 Antibody

Size: 100µg specific antibody in 200µl



Target Protein

Principal Names: CD305, LAIR-1, leukocyte-associated Ig-like receptor 1, leukocyte-associated immunoglobulin-like receptor 1, LAIR1

Official Symbol: LAIR1

Accession Number(s): NP_002278.1; NP_068352.1

Human GeneID(s): [3903](#)

Important Comments: This antibody is expected to recognize both isoforms (NP_002278.1; NP_068352.1).

Immunogen

Peptide with sequence C-NDTEDVSQASPSE, from the internal region of the protein sequence according to NP_002278.1; NP_068352.1.

Please note the [peptide](#) is available for sale.

Purification and Storage

Purified from goat serum by ammonium sulphate precipitation followed by antigen affinity chromatography using the immunizing peptide.

Supplied at 0.5 mg/ml in Tris saline, 0.02% sodium azide, pH7.3 with 0.5% bovine serum albumin.

Aliquot and store at -20°C. Minimize freezing and thawing.

Applications Tested

Peptide ELISA: antibody detection limit dilution 1:1000.

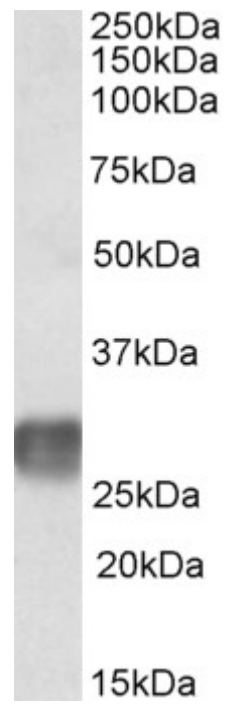
Western blot: Approx 28kDa band observed in Human Lymph Node lysates (calculated MW of 29.8kDa according to NP_068352.1). Recommended concentration: 1-3µg/ml. Primary incubation was 1 hour.

IHC: Paraffin embedded Human Tonsil. Recommended concentration: 3.75µg/ml.

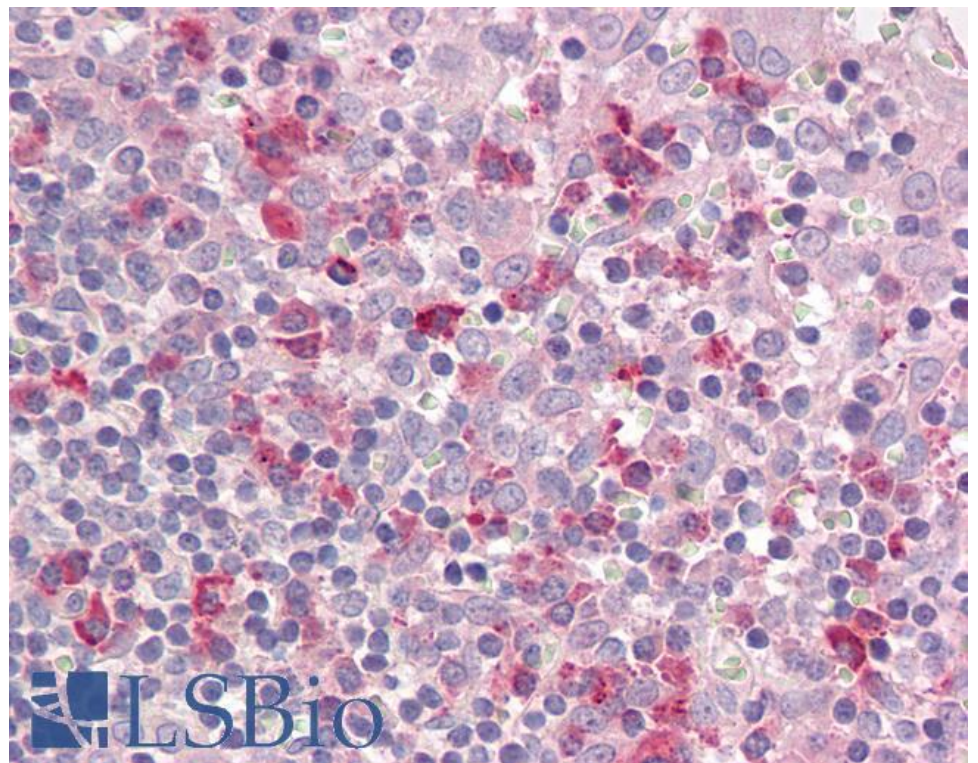
Species Reactivity

Tested: Human

Expected from sequence similarity: Human



EB09844 (2 μ g/ml) staining of Human Lymph Node lysate (35 μ g protein in RIPA buffer). Detected by chemiluminescence.



EB09844 (3.75 μ g/ml) staining of paraffin embedded Human Tonsil. Steamed antigen retrieval with citrate buffer pH 6, AP-staining.