



UK Office

Everest Biotech Ltd

Cherwell Innovation Centre
77 Heyford Park
Upper Heyford
Oxfordshire
OX25 5HD
UK

Enquiries:

info@everestbiotech.com

Sales:

sales@everestbiotech.com

Tech support:

support@everestbiotech.com

Tel: +44 (0)1869 238326

www.everestbiotech.com

**Research Use Only. Not for
diagnostic or therapeutic use.**

EB11655 - Goat Anti-Lamin B1 (aa526-537) Antibody

Size: 100µg specific antibody in 200µl



Target Protein

Principal Names: ADLD, lamin B1, lamin-B1, LMN, LMN2, LMNB, LMNB1, MGC111419, OTTHUMP00000159218

Official Symbol: LMNB1

Accession Number(s): NP_005564.1; NP_001185486.1

Human GeneID(s): [4001](#)

Non-Human GeneID(s): 16906 (mouse)

Important Comments: This antibody is expected to recognize both reported isoforms (NP_005564.1; NP_001185486.1).

Immunogen

Peptide with sequence C-DVKVILKNSQGE, from the internal region (near C terminus) of the protein sequence according to NP_005564.1; NP_001185486.1.

Please note the [peptide](#) is available for sale.

Purification and Storage

Purified from goat serum by ammonium sulphate precipitation followed by antigen affinity chromatography using the immunizing peptide.

Supplied at 0.5 mg/ml in Tris saline, 0.02% sodium azide, pH7.3 with 0.5% bovine serum albumin.

Aliquot and store at -20°C. Minimize freezing and thawing.

Applications Tested

Peptide ELISA: antibody detection limit dilution 1:4000.

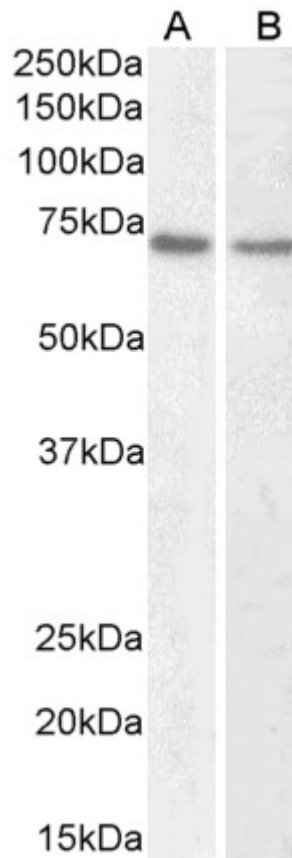
Western blot: Approx 70kDa band observed in nuclear lysates of cell lines HeLa and Jurkat and approx. 70-75kDa in Mouse Liver lysates (calculated MW of 66.4kDa according to Human NP_005564.1 and 66.8kDa according to Mouse NP_034851.2)

Recommended concentration: 1-3µg/ml.

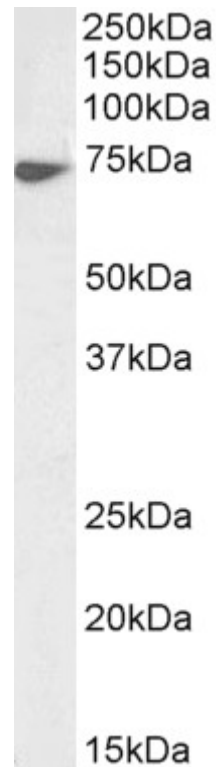
Species Reactivity

Tested: Human, Mouse

Expected from sequence similarity: Human, Mouse, Dog, Pig, Cow



EB11655 (1 μ g/ml) staining of HeLa (A) and Jurkat (B) nuclear lysate (35 μ g protein in RIPA buffer). Primary incubation was 1 hour. Detected by chemiluminescence.



EB11655 (1 μ g/ml) staining of Mouse Liver lysate (35 μ g protein in RIPA buffer). Primary incubation was 1 hour. Detected by chemiluminescence.