



## UK Office

### Everest Biotech Ltd

Cherwell Innovation Centre  
77 Heyford Park  
Upper Heyford  
Oxfordshire  
OX25 5HD  
UK

Enquiries:

[info@everestbiotech.com](mailto:info@everestbiotech.com)

Sales:

[sales@everestbiotech.com](mailto:sales@everestbiotech.com)

Tech support:

[support@everestbiotech.com](mailto:support@everestbiotech.com)

Tel: +44 (0)1869 238326

Fax: +44 (0)1869 238327

## US Office

### Everest Biotech c/o Abcore

405 Maple Street, Suite A106  
Ramona,  
CA 92065  
USA

Inquiries:

[info@everestbiotech.com](mailto:info@everestbiotech.com)

Sales:

[usasales@everestbiotech.com](mailto:usasales@everestbiotech.com)

Tech support:

[support@everestbiotech.com](mailto:support@everestbiotech.com)

Tel: 888-320-4628 (toll-free)

Fax: 888-841-9041

[www.everestbiotech.com](http://www.everestbiotech.com)

**Research Use Only. Not for  
diagnostic or therapeutic use.**

## EB11655 - Goat Anti-Lamin B1 (aa526-537) Antibody

Size: 100µg specific antibody in 200µl



### Target Protein

**Principal Names:** ADLD, lamin B1, lamin-B1, LMN, LMN2, LMNB, LMNB1, MGC111419, OTTHUMP00000159218

**Official Symbol:** LMNB1

**Accession Number(s):** NP\_005564.1; NP\_001185486.1

**Human GeneID(s):** [4001](#)

**Non-Human GeneID(s):** 16906 (mouse)

**Important Comments:** This antibody is expected to recognize both reported isoforms (NP\_005564.1; NP\_001185486.1).

### Immunogen

Peptide with sequence C-DVKVILKNSQGE, from the internal region (near C terminus) of the protein sequence according to NP\_005564.1; NP\_001185486.1.

Please note the [peptide](#) is available for sale.

### Purification and Storage

Purified from goat serum by ammonium sulphate precipitation followed by antigen affinity chromatography using the immunizing peptide.

Supplied at 0.5 mg/ml in Tris saline, 0.02% sodium azide, pH7.3 with 0.5% bovine serum albumin.

Aliquot and store at -20°C. Minimize freezing and thawing.

### Applications Tested

**Peptide ELISA:** antibody detection limit dilution 1:4000.

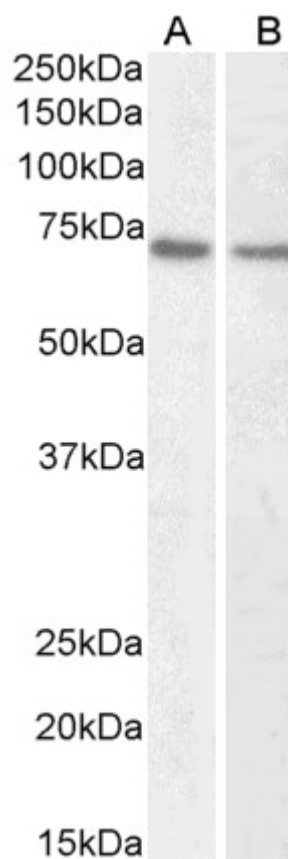
**Western blot:** Approx 70kDa band observed in nuclear lysates of cell lines HeLa and Jurkat and approx. 70-75kDa in Mouse Liver lysates (calculated MW of 66.4kDa according to Human NP\_005564.1 and 66.8kDa according to Mouse NP\_034851.2)

Recommended concentration: 1-3µg/ml.

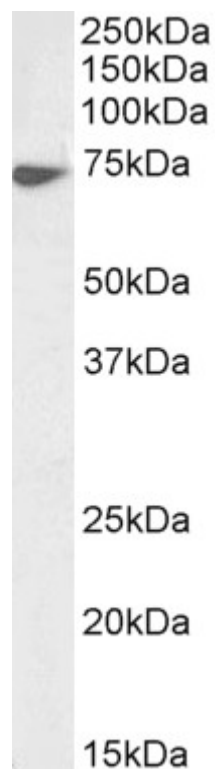
### Species Reactivity

**Tested:** Human, Mouse

**Expected from sequence similarity:** Human, Mouse, Dog, Pig, Cow



EB11655 (1 $\mu$ g/ml) staining of HeLa (A) and Jurkat (B) nuclear lysate (35 $\mu$ g protein in RIPA buffer). Primary incubation was 1 hour. Detected by chemiluminescence.



EB11655 (1 $\mu$ g/ml) staining of Mouse Liver lysate (35 $\mu$ g protein in RIPA buffer). Primary incubation was 1 hour. Detected by chemiluminescence.