



International Office

Everest Biotech Ltd

Vector Laboratories, Inc.
6737 Mowry Ave
Newark, CA 94560
United States

Customer Service:

customerservice@vectorlabs.com

Technical Service:

technical@vectorlabs.com

Tel: +1 (800) 227-6666

www.everestbiotech.com

**Research Use Only. Not for
diagnostic or therapeutic use.**

EB09959 - Goat Anti-LARGE (aa421-433) Antibody

Size: 100µg specific antibody in 200µl



Target Protein

Principal Names: acetylglucosaminyltransferase-like 1A, acetylglucosaminyltransferase-like protein, KIAA0609, like-acetylglucosaminyltransferase, like-glycosyltransferase, MDC1D, LARGE

Official Symbol: LARGE1

Accession Number(s): NP_004728.1

Human GeneID(s): [9215](#)

Important Comments: Reported variants represent identical protein: NP_004728.1, NP_598397.1

Immunogen

Peptide with sequence C-SEADVNSENLQKQ, from the internal region of the protein sequence according to NP_004728.1.

Please note the [peptide](#) is available for sale.

Purification and Storage

Purified from goat serum by ammonium sulphate precipitation followed by antigen affinity chromatography using the immunizing peptide.

Supplied at 0.5 mg/ml in Tris saline, 0.02% sodium azide, pH7.3 with 0.5% bovine serum albumin.

Aliquot and store at -20°C. Minimize freezing and thawing.

Applications Tested

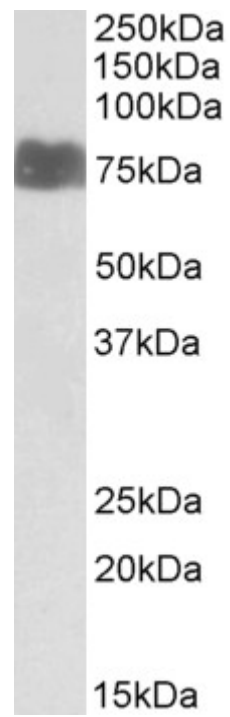
Peptide ELISA: antibody detection limit dilution 1:2000.

Western blot: Approx 75kDa band observed in Human Kidney, and Heart lysates (calculated MW of 88.1kDa according to NP_004728.1). Recommended concentration: 1-3µg/ml.

Species Reactivity

Tested: Human

Expected from sequence similarity: Human, Dog, Cow



EB09959 (1 μ g/ml) staining of Human Kidney lysate (35 μ g protein in RIPA buffer). Primary incubation was 1 hour.
Detected by chemiluminescence.