



UK Office

Everest Biotech Ltd

Cherwell Innovation Centre
77 Heyford Park
Upper Heyford
Oxfordshire
OX25 5HD
UK

Enquiries:

info@everestbiotech.com

Sales:

sales@everestbiotech.com

Tech support:

support@everestbiotech.com

Tel: +44 (0)1869 238326

Fax: +44 (0)1869 238327

US Office

Everest Biotech c/o Abcore

405 Maple Street, Suite A106
Ramona,
CA 92065
USA

Inquiries:

info@everestbiotech.com

Sales:

usasales@everestbiotech.com

Tech support:

support@everestbiotech.com

Tel: 888-320-4628 (toll-free)

Fax: 888-841-9041

www.everestbiotech.com

**Research Use Only. Not for
diagnostic or therapeutic use.**

EB08822 - Goat Anti-LASS1 Antibody

Size: 100µg specific antibody in 200µl



Target Protein

Principal Names: LAG1, CerS1, LASS1, LAG1 homolog, ceramide synthase 1, MGC90349, UOG1, LAG1 longevity assurance homolog 1, longevity assurance (LAG1, S. cerevisiae) homolog 1, longevity assurance gene 1, upstream of GDF1

Official Symbol: CERS1

Accession Number(s): NP_067090.1; NP_937850.1

Human GeneID(s): [10715](#)

Non-Human GeneID(s): 93898 (mouse), 306351 (rat)

Important Comments: This antibody is expected to recognize both reported isoforms (NP_067090.1 and NP_937850.1).

Immunogen

Peptide with sequence C-KDLREYDTAEAQ, from the internal region of the protein sequence according to NP_067090.1; NP_937850.1.

Please note the [peptide](#) is available for sale.

Purification and Storage

Purified from goat serum by ammonium sulphate precipitation followed by antigen affinity chromatography using the immunizing peptide.

Supplied at 0.5 mg/ml in Tris saline, 0.02% sodium azide, pH7.3 with 0.5% bovine serum albumin.

Aliquot and store at -20°C. Minimize freezing and thawing.

Applications Tested

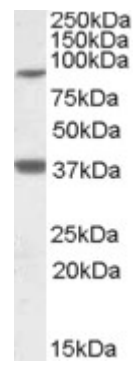
Peptide ELISA: antibody detection limit dilution 1:64000.

Western blot: Approx. 37 kDa band observed in Human Brain (Cerebellum, Cerebral Cortex and Frontal Cortex) lysates (calculated MW of 38.0 kDa according to NP_937850.1) An additional band of unknown identity was also consistently observed at 85 kDa. This band was successfully blocked by incubation with the immunising peptide. Recommended concentration: 1-3µg/ml. Primary incubation 1 hour at room temperature.

Species Reactivity

Tested: Human

Expected from sequence similarity: Human, Mouse, Pig, Cow



EB08822 (1 μ g/ml) staining of Frontal Cortex lysate (35 μ g protein in RIPA buffer). Detected by chemiluminescence.