



## International Office

### Everest Biotech Ltd

Vector Laboratories, Inc.  
6737 Mowry Ave  
Newark, CA 94560  
United States

Customer Service:

[customerservice@vectorlabs.com](mailto:customerservice@vectorlabs.com)

Technical Service:

[technical@vectorlabs.com](mailto:technical@vectorlabs.com)

Tel: +1 (800) 227-6666

[www.everestbiotech.com](http://www.everestbiotech.com)

**Research Use Only. Not for  
diagnostic or therapeutic use.**

## EB08824 - Goat Anti-LASS3 / CerS3 Antibody

Size: 100µg specific antibody in 200µl



### Target Protein

**Principal Names:** LASS3, CerS3, LAG1 homolog, ceramide synthase 3, MGC27091, LAG1 longevity assurance homolog 3

**Official Symbol:** CERS3

**Accession Number(s):** NP\_849164.2

**Human GeneID(s):** [204219](#)

**Non-Human GeneID(s):** 545975 (mouse), 499174 (rat)

### Immunogen

Peptide with sequence C-RAERHLIPNGQHGH, from the C Terminus of the protein sequence according to NP\_849164.2.

Please note the [peptide](#) is available for sale.

### Purification and Storage

Purified from goat serum by ammonium sulphate precipitation followed by antigen affinity chromatography using the immunizing peptide.

Supplied at 0.5 mg/ml in Tris saline, 0.02% sodium azide, pH7.3 with 0.5% bovine serum albumin.

Aliquot and store at -20°C. Minimize freezing and thawing.

### Applications Tested

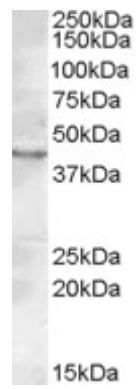
**Peptide ELISA:** antibody detection limit dilution 1:32000.

**Western blot:** Approx. 45 kDa band observed in Rat Testis lysates (calculated MW of 46.3 kDa according to Human NP\_849164.2 and of 47.2 kDa according to Rat NP\_001121033.1). Recommended concentration: 2-3µg/ml.

### Species Reactivity

**Tested:** Rat

**Expected from sequence similarity:** Human, Mouse, Rat



EB08824 (0.2 $\mu$ g/ml) staining of Rat Testis lysate (35 $\mu$ g protein in RIPA buffer). Primary incubation was 1 hour.  
Detected by chemiluminescence.