



## International Office

### Everest Biotech Ltd

Vector Laboratories, Inc.  
6737 Mowry Ave  
Newark, CA 94560  
United States

Customer Service:

[customerservice@vectorlabs.com](mailto:customerservice@vectorlabs.com)

Technical Service:

[technical@vectorlabs.com](mailto:technical@vectorlabs.com)

Tel: +1 (800) 227-6666

[www.everestbiotech.com](http://www.everestbiotech.com)

**Research Use Only. Not for  
diagnostic or therapeutic use.**

## EB06418 - Goat Anti-LAT1 Antibody

Size: 100µg specific antibody in 200µl



### Target Protein

**Principal Names:** LAT1, LAT, linker for activation of T cells, pp36, 36 kDa  
phospho-tyrosine adaptor protein, linker for activation of T-cells family member 1

**Official Symbol:** LAT

**Accession Number(s):** NP\_055202.1; NP\_001014987.1; NP\_001014989.1;  
NP\_001014988.1

**Human GeneID(s):** [27040](#)

**Important Comments:** This antibody is expected to recognize isoform a (NP\_055202.1),  
isoform b (NP\_001014987.1 and NP\_001014989.1) and isoform c (NP\_001014988.1).

### Immunogen

Peptide with sequence C-GAPDYENLQELN, from the C Terminus of the protein  
sequence according to NP\_055202.1; NP\_001014987.1; NP\_001014989.1;  
NP\_001014988.1.

Please note the [peptide](#) is available for sale.

### Purification and Storage

Purified from goat serum by ammonium sulphate precipitation followed by antigen affinity  
chromatography using the immunizing peptide.

Supplied at 0.5 mg/ml in Tris saline, 0.02% sodium azide, pH7.3 with 0.5% bovine serum  
albumin.

Aliquot and store at -20°C. Minimize freezing and thawing.

### Applications Tested

**Peptide ELISA:** antibody detection limit dilution 1:2000.

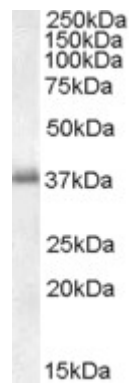
**Western blot:** Approx 37kDa band observed in Human Peripheral Blood

Mononucleocytes lysates (calculated MW of 27.9kDa according to NP\_055202.1). This  
molecular weight is routinely observed by other sources. Recommended concentration:  
0.01-0.03µg/ml.

### Species Reactivity

**Tested:** Human

**Expected from sequence similarity:** Human, Mouse, Rat



EB06418 (0.01 $\mu$ g/ml) staining of Peripheral Blood Mononucleocytes lysate (35 $\mu$ g protein in RIPA buffer). Primary incubation was 1 hour. Detected by chemiluminescence.