



UK Office

Everest Biotech Ltd

Cherwell Innovation Centre
77 Heyford Park
Upper Heyford
Oxfordshire
OX25 5HD
UK

Enquiries:

info@everestbiotech.com

Sales:

sales@everestbiotech.com

Tech support:

support@everestbiotech.com

Tel: +44 (0)1869 238326

Fax: +44 (0)1869 238327

US Office

Everest Biotech c/o Abcore

405 Maple Street, Suite A106
Ramona,
CA 92065
USA

Inquiries:

info@everestbiotech.com

Sales:

usasales@everestbiotech.com

Tech support:

support@everestbiotech.com

Tel: 888-320-4628 (toll-free)

Fax: 888-841-9041

www.everestbiotech.com

**Research Use Only. Not for
diagnostic or therapeutic use.**

EB11446 - Goat Anti-lava lamp (*Drosophila melanogaster*) Antibody

Size: 100µg specific antibody in 200µl



Target Protein

Principal Names: ABP2, actin-binding protein 2, CG#6450, CG6450, CG6450-PC, Dmel\CG6450, Dmel_CG6450, Lava, lava, lava lamp, lavalamp, Lava-Lamp, LVA, Lva, lva-PC, Lvl, lvi, Lva

Official Symbol: LVA

Accession Number(s): NP_525064.1

Immunogen

Peptide with sequence C-HTDAQVSAELAKQ, from the internal region of the protein sequence according to NP_525064.1.

Please note the [peptide](#) is available for sale.

Purification and Storage

Purified from goat serum by ammonium sulphate precipitation followed by antigen affinity chromatography using the immunizing peptide.

Supplied at 0.5 mg/ml in Tris saline, 0.02% sodium azide, pH7.3 with 0.5% bovine serum albumin.

Aliquot and store at -20°C. Minimize freezing and thawing.

Applications Tested

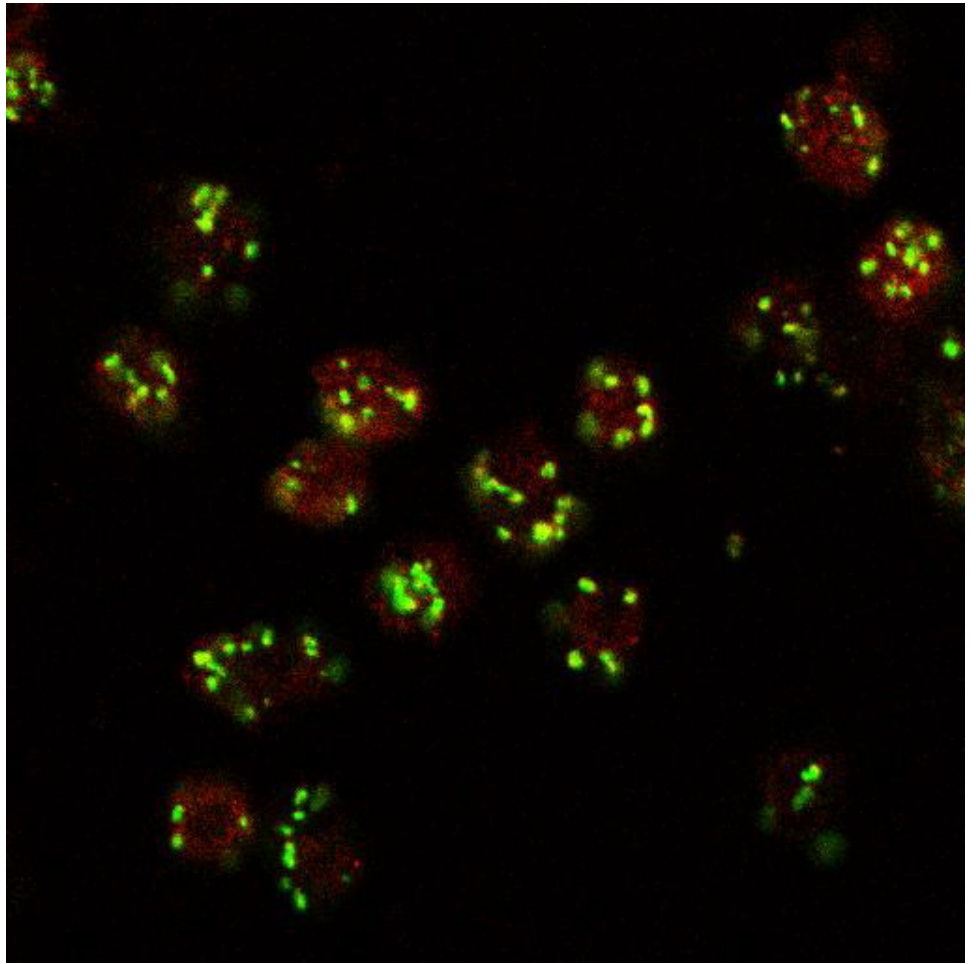
Peptide ELISA: antibody detection limit dilution 1:32000.

Immunocytochemistry: Colabeling with GM130 of Golgi in 4% PFA-fixed *Drosophila* S2 cells. Recommended concentration: 10ug/ml.

Species Reactivity

Tested: *Drosophila*

Expected from sequence similarity: *Drosophila*



EB11446 (10ug/ml) staining (red, AlexaFluor 555) of Drosophila S2 cells, co-stained with MG130 rabbit antibody (green, AlexaFluor 488). The yellow spots indicate co-localization of the two proteins. Data obtained by F. Riedel and S Munro, MRC Laboratory of Mol Biol, Cambridge, UK