

International Office

Everest Biotech Ltd

Vector Laboratories, Inc.
6737 Mowry Ave
Newark, CA 94560
United States

Customer Service:

customerservice@vectorlabs.com

Technical Service:

technical@vectorlabs.com

Tel: +1 (800) 227-6666

www.everestbiotech.com

**Research Use Only. Not for
diagnostic or therapeutic use.**

EB11387 - Goat Anti-LCK (aa39-52) Antibody

Size: 100µg specific antibody in 200µl



Target Protein

Principal Names: leukocyte C-terminal Src kinase, LSK, lymphocyte cell-specific protein-tyrosine kinase, lymphocyte-specific protein tyrosine kinase, OTTHUMP00000008640, OTTHUMP00000008740, OTTHUMP00000008741, p56(LSTRA) protein-tyrosine kinase, p56lck, pp58lck, proto-oncogene tyrosine-protein kinase LCK, t cell-specific protein-tyrosine kinase, T-lymphocyte specific protein tyrosine kinase p56lck, tyrosine-protein kinase Lck, YT16, LCK

Official Symbol: LCK

Accession Number(s): NP_005347.3

Human GeneID(s): [3932](#)

Non-Human GeneID(s): 16818 (mouse), 313050 (rat)

Important Comments: This antibody is not expected to cross-react with other tyrosine protein kinases. Reported variants represent identical protein: NP_005347.3, NP_001036236.1

Immunogen

Peptide with sequence C-RNGSEVRDPLVTYE, from the internal region (near N Terminus) of the protein sequence according to NP_005347.3.

Please note the [peptide](#) is available for sale.

Purification and Storage

Purified from goat serum by ammonium sulphate precipitation followed by antigen affinity chromatography using the immunizing peptide.

Supplied at 0.5 mg/ml in Tris saline, 0.02% sodium azide, pH7.3 with 0.5% bovine serum albumin.

Aliquot and store at -20°C. Minimize freezing and thawing.

Applications Tested

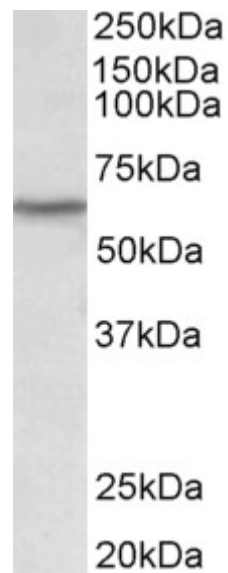
Peptide ELISA: antibody detection limit dilution 1:16000.

Western blot: Approx 60kDa band observed in Human and Rat Thymus lysates (calculated MW of 58.0kDa according to NP_005347.3). Recommended concentration: 0.1-0.3µg/ml. Approx 60kDa band observed in Pig Bone Marrow and Spleen lysates (calculated MW of 58.2kDa according to NP_001137185.1). Recommended concentration: 1-3µg/ml.

Species Reactivity

Tested: Human, Rat, Pig

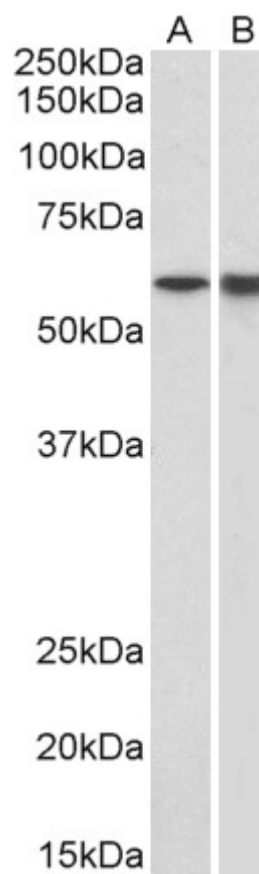
Expected from sequence similarity: Human, Mouse, Rat, Dog, Pig, Cow



EB11387 (0.1 μ g/ml) staining of Human Thymus lysate (35 μ g protein in RIPA buffer). Primary incubation was 1 hour. Detected by chemiluminescence.



EB11387 (0.3 μ g/ml) staining of Rat Thymus lysate (35 μ g protein in RIPA buffer). Primary incubation was 1 hour. Detected by chemiluminescence.



EB11387 (1 μ g/ml) staining of Pig Bone Marrow (A) and Spleen (B) lysates (35 μ g protein in RIPA buffer). Primary incubation was 1 hour. Detected by chemiluminescence.