



## International Office

### Everest Biotech Ltd

Vector Laboratories, Inc.  
6737 Mowry Ave  
Newark, CA 94560  
United States

Customer Service:

[customerservice@vectorlabs.com](mailto:customerservice@vectorlabs.com)

Technical Service:

[technical@vectorlabs.com](mailto:technical@vectorlabs.com)

Tel: +1 (800) 227-6666

[www.everestbiotech.com](http://www.everestbiotech.com)

**Research Use Only. Not for  
diagnostic or therapeutic use.**

## EB07978 - Goat Anti-LDHC (aa 221 - 233) Antibody

Size: 100µg specific antibody in 200µl



### Target Protein

**Principal Names:** LDHC, MGC111073, lactate dehydrogenase C, LDH3, LDHX

**Official Symbol:** LDHC

**Accession Number(s):** NP\_002292.1; NP\_059144.1

**Human GeneID(s):** [3948](#)

**Non-Human GeneID(s):** 16833 (mouse)

**Important Comments:** Both variants represent identical product (NP\_002292.1 and NP\_059144.1).

### Immunogen

Peptide with sequence C-DSDKEHWKNVHKQ, from the internal region of the protein sequence according to NP\_002292.1; NP\_059144.1.

Please note the [peptide](#) is available for sale.

### Purification and Storage

Purified from goat serum by ammonium sulphate precipitation followed by antigen affinity chromatography using the immunizing peptide.

Supplied at 0.5 mg/ml in Tris saline, 0.02% sodium azide, pH7.3 with 0.5% bovine serum albumin.

Aliquot and store at -20°C. Minimize freezing and thawing.

### Applications Tested

**Peptide ELISA:** antibody detection limit dilution 1:1000.

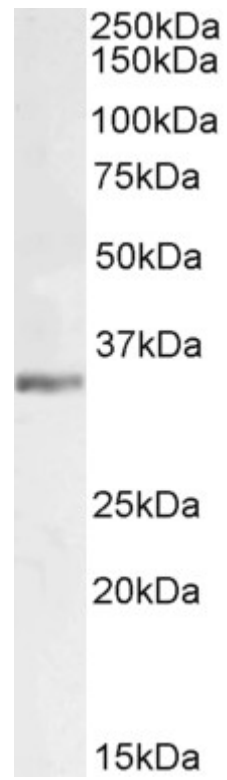
**Western blot:** Approx 35kDa band observed in Mouse Testis lysates (calculated MW of 35.9kDa according to Mouse NP\_038608.1). Recommended concentration: 0.3-1µg/ml. Primary incubation was 1 hour.

**IHC:** Paraffin embedded Human Testis. Recommended concentration: 5-6µg/ml.

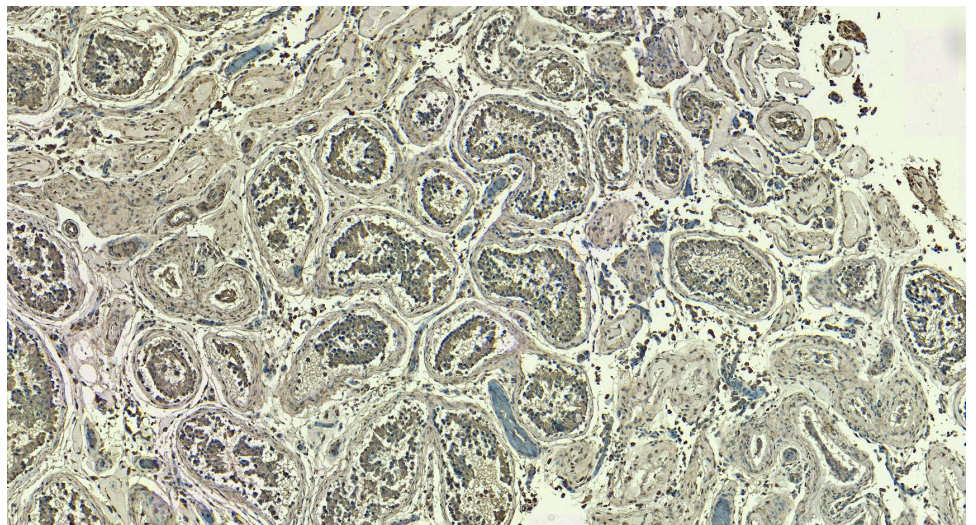
### Species Reactivity

**Tested:** Human, Mouse

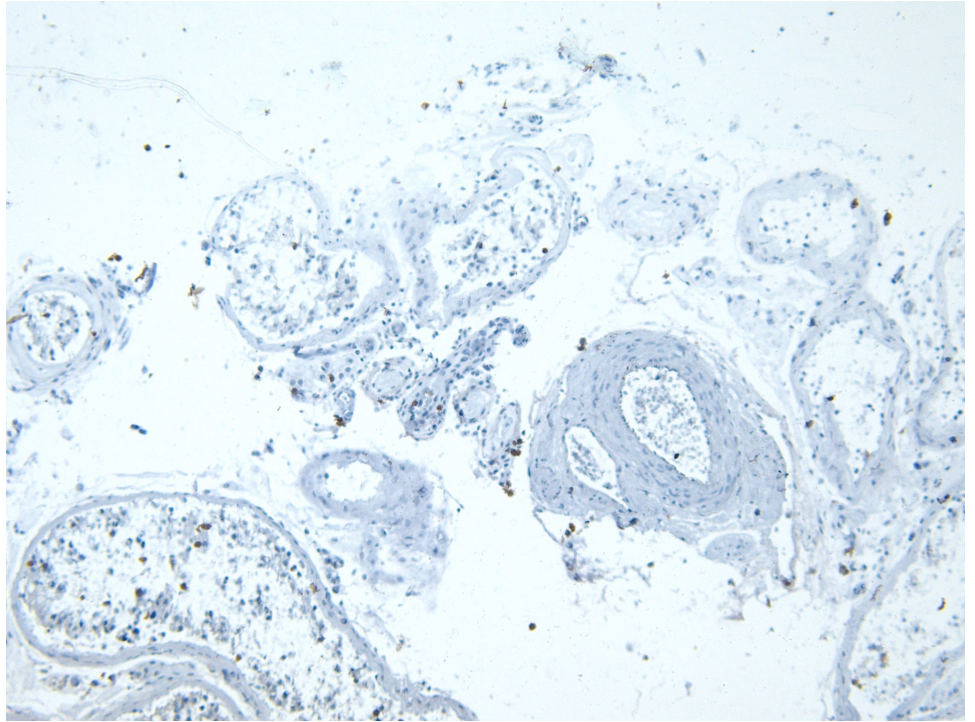
**Expected from sequence similarity:** Human, Mouse



EB07978 (1µg/ml) staining of Mouse Testes lysate (35µg protein in RIPA buffer). Detected by chemiluminescence.



EB07978 (5µg/ml) staining of paraffin embedded Human Testis. Heat induced antigen retrieval with citrate buffer pH 6, HRP-staining.



EB07978 Negative Control showing staining of paraffin embedded Human Testis, with no primary antibody.