



## UK Office

### Everest Biotech Ltd

Cherwell Innovation Centre  
77 Heyford Park  
Upper Heyford  
Oxfordshire  
OX25 5HD  
UK

Enquiries:

[info@everestbiotech.com](mailto:info@everestbiotech.com)

Sales:

[sales@everestbiotech.com](mailto:sales@everestbiotech.com)

Tech support:

[support@everestbiotech.com](mailto:support@everestbiotech.com)

Tel: +44 (0)1869 238326

[www.everestbiotech.com](http://www.everestbiotech.com)

**Research Use Only. Not for  
diagnostic or therapeutic use.**

## EB07263 - Goat Anti-Leptin Receptor Antibody

Size: 100µg specific antibody in 200µl



### Target Protein

**Principal Names:** LEPR, leptin receptor, CD295, OBR, OB receptor, LeprB

**Official Symbol:** LEPR

**Accession Number(s):** NP\_002294.2; NP\_001003679.1; NP\_001003680.1

**Human GeneID(s):** [3953](#)

**Important Comments:** This antibody is expected to recognise all three reported isoforms (NP\_002294.2; NP\_001003679.1; NP\_001003680.1).

### Immunogen

Peptide with sequence C-TQDDIEKHQSDAG, from the internal region of the protein sequence according to NP\_002294.2; NP\_001003679.1; NP\_001003680.1.

Please note the [peptide](#) is available for sale.

### Purification and Storage

Purified from goat serum by ammonium sulphate precipitation followed by antigen affinity chromatography using the immunizing peptide.

Supplied at 0.5 mg/ml in Tris saline, 0.02% sodium azide, pH7.3 with 0.5% bovine serum albumin.

Aliquot and store at -20°C. Minimize freezing and thawing.

### Applications Tested

**Peptide ELISA:** antibody detection limit dilution 1:128000.

**Western blot:** Approx 140-150kDa band observed in Human Cerebellum, Mouse Foetal Brain and Rat Brain lysates (calculated MW of 132kDa according to Human NP\_002294.2 and 130.8kDa according to Mouse NP\_666258.2 and Rat NP\_036728.1). This molecular weight is routinely observed by other sources. Recommended concentration: 1-2µg/ml. Primary incubation 1 hour at room temperature.

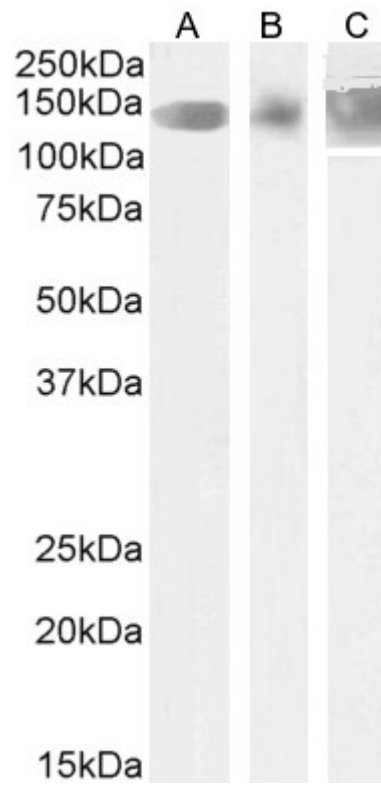
**IHC:** Paraffin embedded Human Kidney. Recommended concentration: 4-6µg/ml.

**Flow Cytometry:** Flow cytometric analysis of K562 cells. Recommended concentration: 10ug/ml.

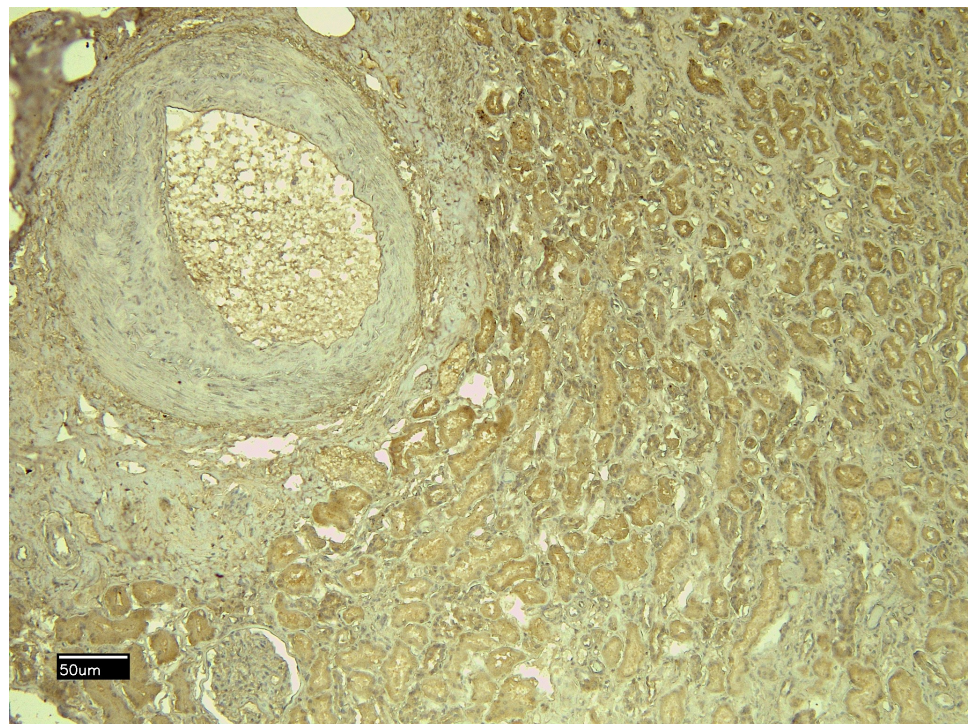
### Species Reactivity

**Tested:** Human, Mouse, Rat

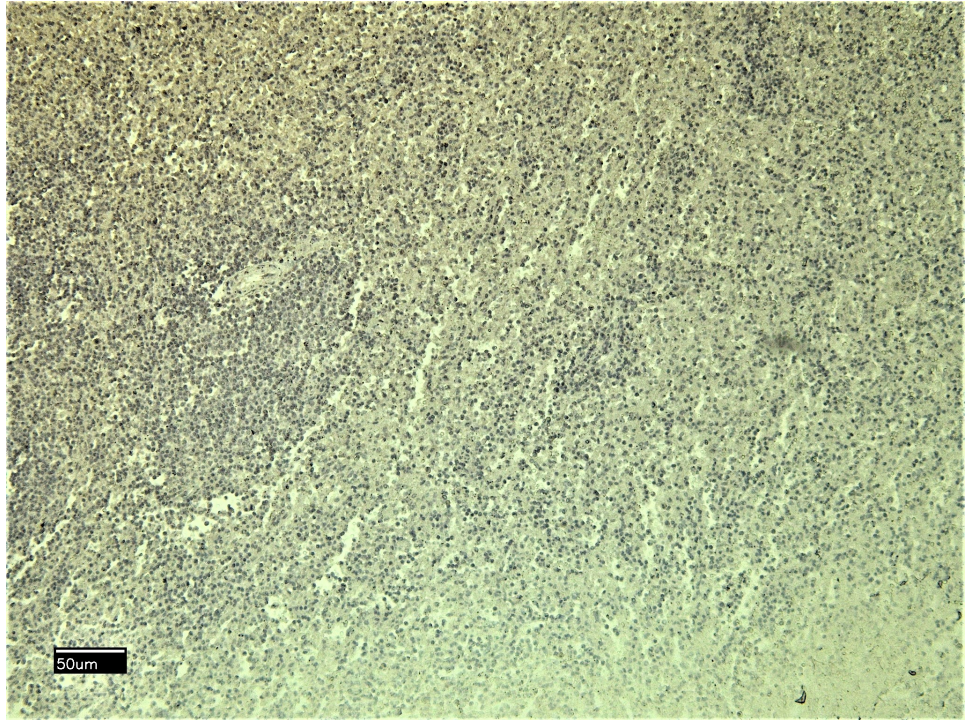
**Expected from sequence similarity:** Human, Dog



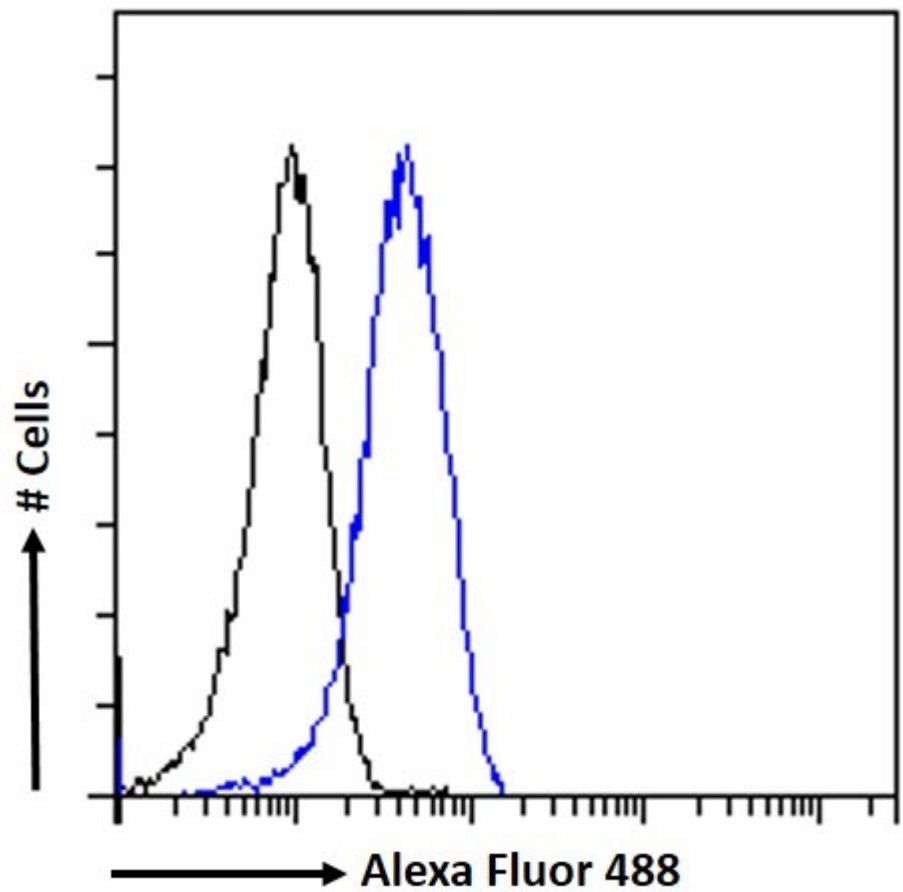
EB07263 (1.75 $\mu$ g/ml) staining of Human Cerebellum (A), and (1.5 $\mu$ g/ml) Mouse Foetal Brain (B) and Rat Brain (C) lysate (35 $\mu$ g protein in RIPA buffer). Detected by chemiluminescence.



EB07263 (6 $\mu$ g/ml) staining of paraffin embedded Human Kidney. Heat induced antigen retrieval with citrate buffer Ph 6, HRP-staining.



EB07263 Negative Control showing staining of paraffin embedded Human Kidney, with no primary antibody.



EB07263 Flow cytometric analysis of paraformaldehyde fixed K562 cells (blue line), permeabilized with 0.5% Triton. Primary incubation 1hr (10ug/ml) followed by Alexa Fluor 488 secondary antibody (1ug/ml). IgG control: Unimmunized goat IgG (black line) followed by Alexa Fluor 488 secondary antibody.