

## International Office

### Everest Biotech Ltd

Vector Laboratories, Inc.  
6737 Mowry Ave  
Newark, CA 94560  
United States

Customer Service:

[customerservice@vectorlabs.com](mailto:customerservice@vectorlabs.com)

Technical Service:

[technical@vectorlabs.com](mailto:technical@vectorlabs.com)

Tel: +1 (800) 227-6666

[www.everestbiotech.com](http://www.everestbiotech.com)

**Research Use Only. Not for  
diagnostic or therapeutic use.**

## EB07263 - Goat Anti-Leptin Receptor Antibody

Size: 100µg specific antibody in 200µl



### Target Protein

**Principal Names:** LEPR, leptin receptor, CD295, OBR, OB receptor, LeprB

**Official Symbol:** LEPR

**Accession Number(s):** NP\_002294.2; NP\_001003679.1; NP\_001003680.1

**Human GeneID(s):** [3953](#)

**Important Comments:** This antibody is expected to recognise all three reported isoforms (NP\_002294.2; NP\_001003679.1; NP\_001003680.1).

### Immunogen

Peptide with sequence C-TQDDIEKHQSDAG, from the internal region of the protein sequence according to NP\_002294.2; NP\_001003679.1; NP\_001003680.1.

Please note the [peptide](#) is available for sale.

### Purification and Storage

Purified from goat serum by ammonium sulphate precipitation followed by antigen affinity chromatography using the immunizing peptide.

Supplied at 0.5 mg/ml in Tris saline, 0.02% sodium azide, pH7.3 with 0.5% bovine serum albumin.

Aliquot and store at -20°C. Minimize freezing and thawing.

### Applications Tested

**Peptide ELISA:** antibody detection limit dilution 1:2000.

**IHC:** A customer reported weak membranous staining present in paraffin embedded human brain.

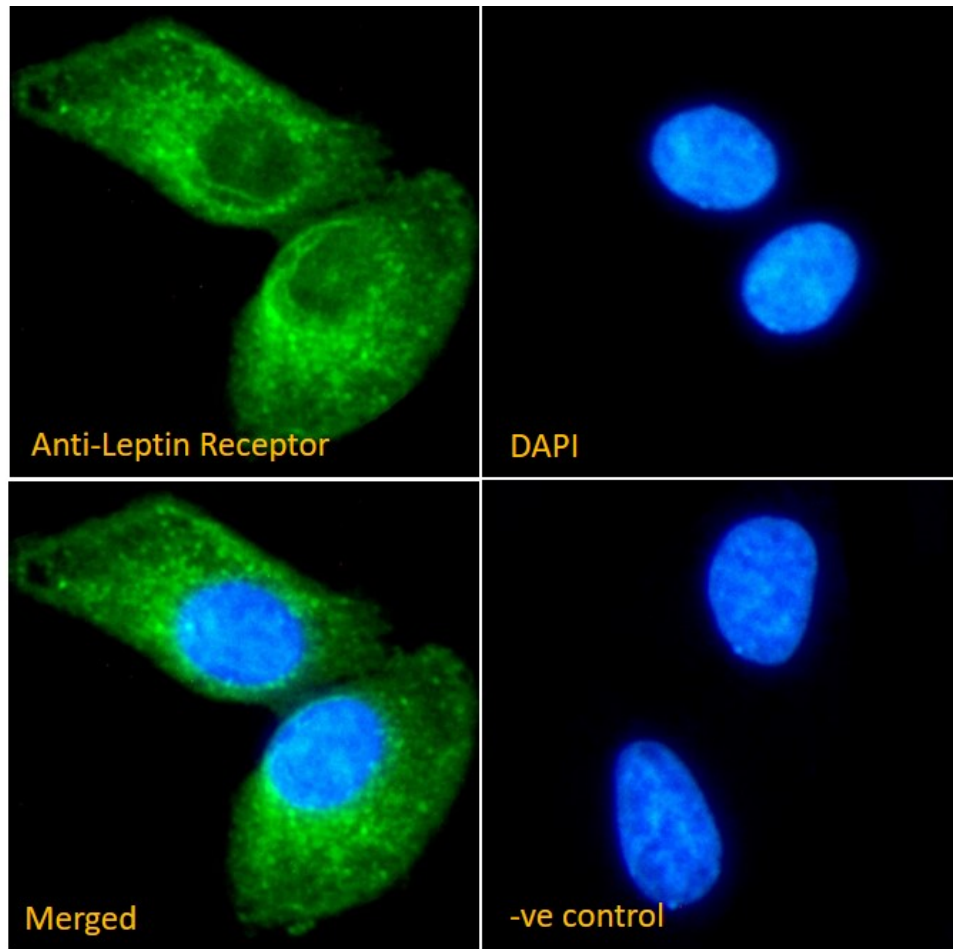
**Immunofluorescence:** Strong expression of the protein seen in the cytoplasm and vesicles of U251 and HEK293 cells. Recommended concentration: 10µg/ml.

**Flow Cytometry:** Flow cytometric analysis of HEK293 cells. Recommended concentration: 10ug/ml.

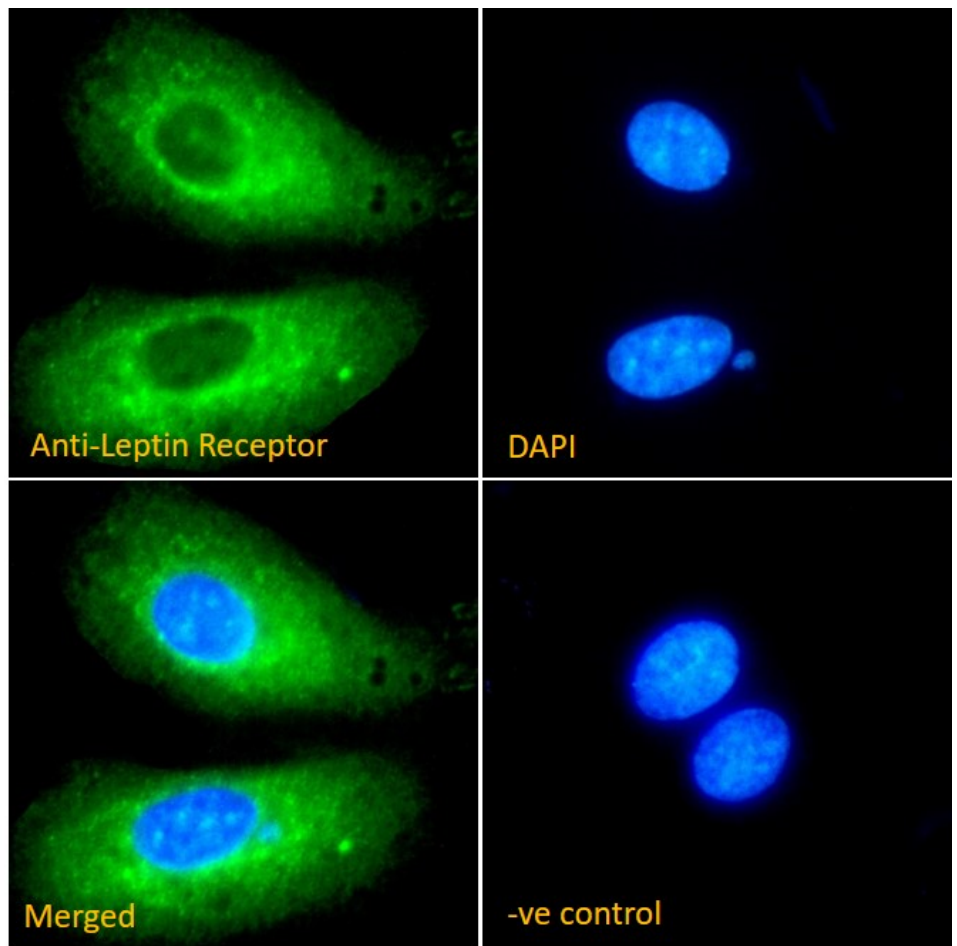
### Species Reactivity

**Tested:** Human

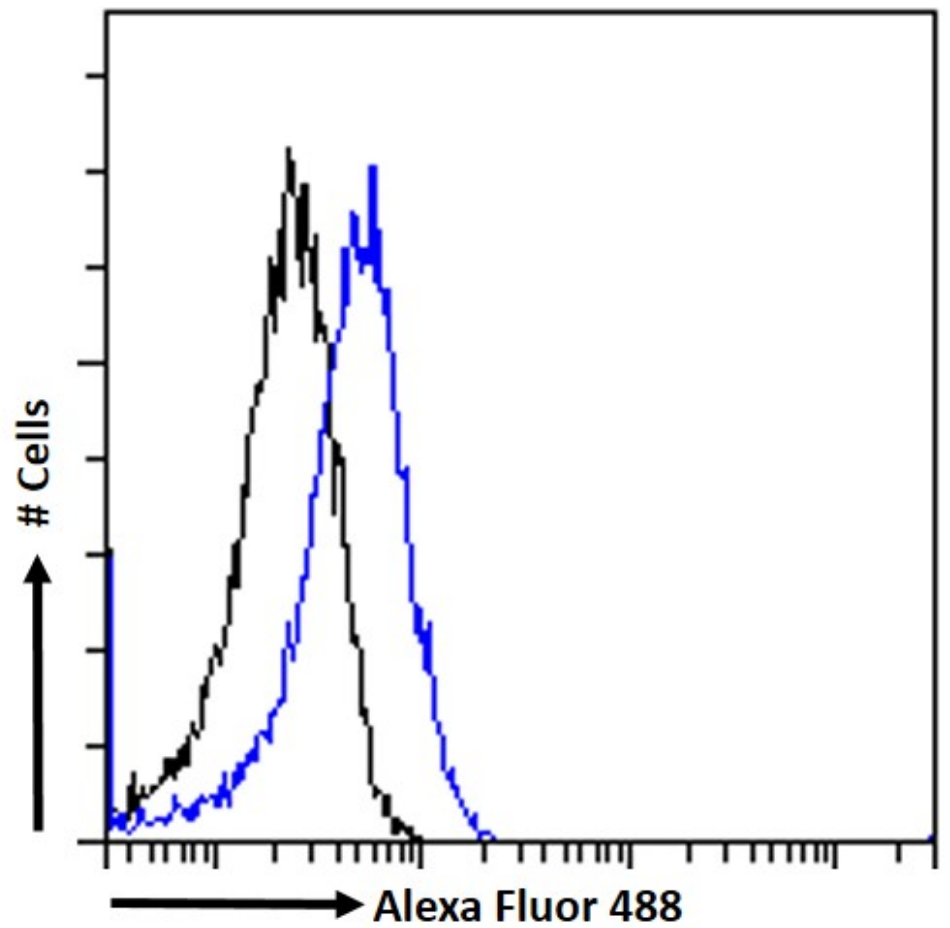
**Expected from sequence similarity:** Human, Dog



EB07263 Immunofluorescence analysis of paraformaldehyde fixed U251. Primary incubation 1hr (1:50 dilution) followed by Alexa Fluor® 488 secondary antibody (1:2000 dilution), showing cytoplasmic and vesicles staining. The nuclear stain is DAPI (blue). Negative control: Anti-Goat IgG followed by Alexa Fluor® 488 secondary antibody.



EB07263 Immunofluorescence analysis of paraformaldehyde fixed HEK293. Primary incubation 1hr (1:50 dilution) followed by Alexa Fluor® 488 secondary antibody (1:2000 dilution), showing cytoplasmic and vesicles staining. The nuclear stain is DAPI (blue). Negative control: Anti-Goat IgG followed by Alexa Fluor® 488 secondary antibody.



EB07263 Flow cytometric analysis of paraformaldehyde fixed HEK293 cells (blue line) permeabilized with 0.5% Triton. Primary incubation 1hr (10ug/ml) followed by Alexa Fluor 488® conjugated secondary antibody (1ug/ml). IgG control: Unimmunized goat IgG (black line) followed by Alexa Fluor 488 secondary antibody.