



UK Office

Everest Biotech Ltd

Cherwell Innovation Centre
77 Heyford Park
Upper Heyford
Oxfordshire
OX25 5HD
UK

Enquiries:

info@everestbiotech.com

Sales:

sales@everestbiotech.com

Tech support:

support@everestbiotech.com

Tel: +44 (0)1869 238326

Fax: +44 (0)1869 238327

US Office

Everest Biotech c/o Abcore

405 Maple Street, Suite A106
Ramona,
CA 92065
USA

Inquiries:

info@everestbiotech.com

Sales:

usasales@everestbiotech.com

Tech support:

support@everestbiotech.com

Tel: 888-320-4628 (toll-free)

Fax: 888-841-9041

www.everestbiotech.com

**Research Use Only. Not for
diagnostic or therapeutic use.**

EB07981 - Goat Anti-LGP2 Antibody

Size: 100µg specific antibody in 200µl



Target Protein

Principal Names: DHX58, LGP2, DEXH (Asp-Glu-X-His) box polypeptide 58, D11LGP2, D11lgp2e, LGP2, RNA helicase LGP2, ortholog of mouse D11lgp2

Official Symbol: DHX58

Accession Number(s): NP_077024.2

Human GeneID(s): [79132](#)

Immunogen

Peptide with sequence DFLQHCAENLSD, from the C Terminus of the protein sequence according to NP_077024.2.

Please note the [peptide](#) is available for sale.

Purification and Storage

Purified from goat serum by ammonium sulphate precipitation followed by antigen affinity chromatography using the immunizing peptide.

Supplied at 0.5 mg/ml in Tris saline, 0.02% sodium azide, pH7.3 with 0.5% bovine serum albumin.

Aliquot and store at -20°C. Minimize freezing and thawing.

Applications Tested

Peptide ELISA: antibody detection limit dilution 1:8000.

Western blot: Approx 80kDa band observed in Human Liver lysates (calculated MW of 76.6kDa according to NP_077024.2). Recommended concentration: 0.3-1µg/ml. An additional band of unknown identity was also consistently observed at 24kDa. This band was successfully blocked by incubation with the immunising peptide. Primary incubation was 1 hour.

IHC: Paraffin embedded Human Brain (Cortex). Recommended concentration: 8µg/ml.

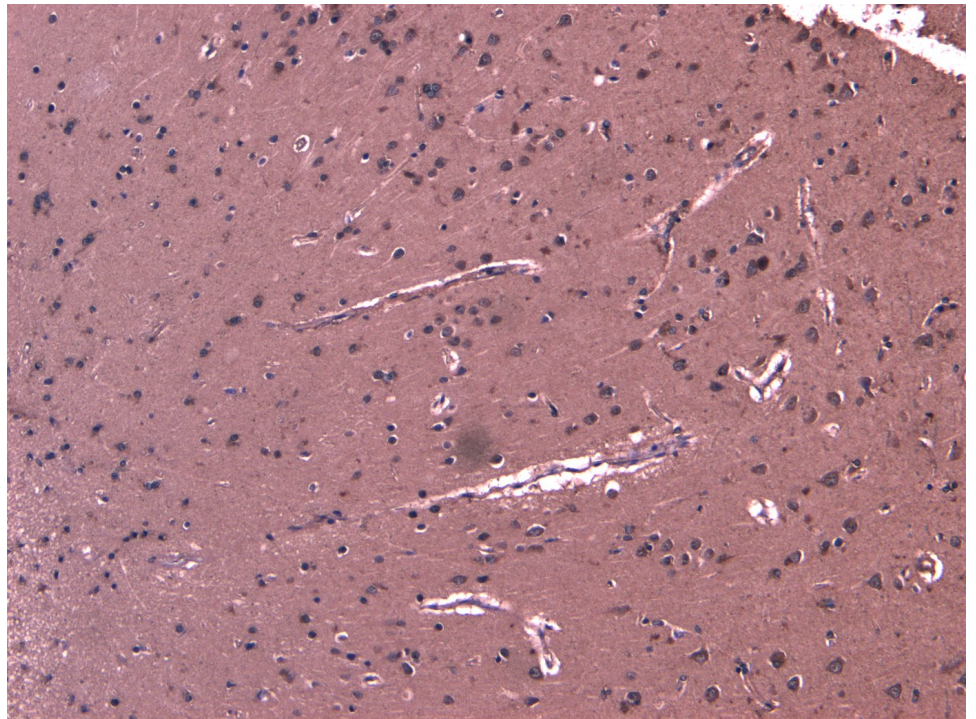
Species Reactivity

Tested: Human

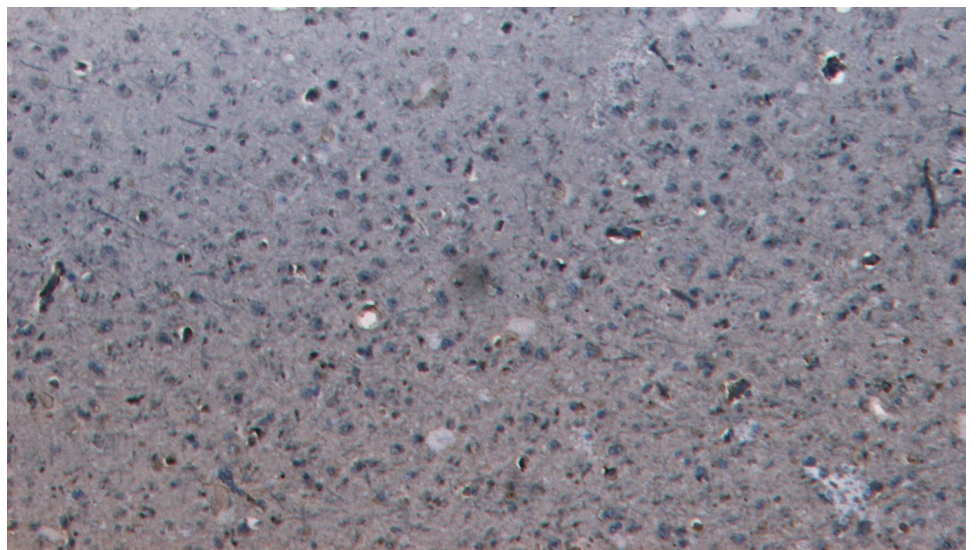
Expected from sequence similarity: Human



EB07981 (0.3 μ g/ml) staining of Human Liver lysate (35 μ g protein in RIPA buffer). Detected by chemiluminescence.



EB07981 (8 μ g/ml) staining of paraffin embedded Human Cortex. Heat induced antigen retrieval with citrate buffer pH 6, HRP-staining.



EB07981 Negative Control showing staining of paraffin embedded Human Cortex, with no primary antibody.