



International Office

Everest Biotech Ltd

Vector Laboratories, Inc.
6737 Mowry Ave
Newark, CA 94560
United States

Customer Service:

customerservice@vectorlabs.com

Technical Service:

technical@vectorlabs.com

Tel: +1 (800) 227-6666

www.everestbiotech.com

**Research Use Only. Not for
diagnostic or therapeutic use.**

EB07460 - Goat Anti-LHCGR Antibody

Size: 100µg specific antibody in 200µl



Target Protein

Principal Names: LHCGR, luteinizing hormone/choriogonadotropin receptor, LCGR, LGR2, LHR, hLHR, luteinizing hormone receptor, lutropin/choriogonadotropin receptor, LH receptor, CG receptor

Official Symbol: LHCGR

Accession Number(s): NP_000224.2

Human GeneID(s): [3973](#)

Immunogen

Peptide with sequence CQGTALLDKTRYTE, from the C Terminus of the protein sequence according to NP_000224.2.

Please note the [peptide](#) is available for sale.

Purification and Storage

Purified from goat serum by ammonium sulphate precipitation followed by antigen affinity chromatography using the immunizing peptide.

Supplied at 0.5 mg/ml in Tris saline, 0.02% sodium azide, pH7.3 with 0.5% bovine serum albumin.

Aliquot and store at -20°C. Minimize freezing and thawing.

Applications Tested

Peptide ELISA: antibody detection limit dilution 1:32000.

Western blot: Preliminary experiments gave an approx 35kDa band in K562 cell lysates after 0.1µg/ml antibody staining. This band was successfully blocked by incubation with the immunizing peptide. Primary incubation 1 hour at room temperature. Please note that we cannot currently find an explanation in the literature for this band, given the calculated size of 78.6kDa according to NP_000224.2.

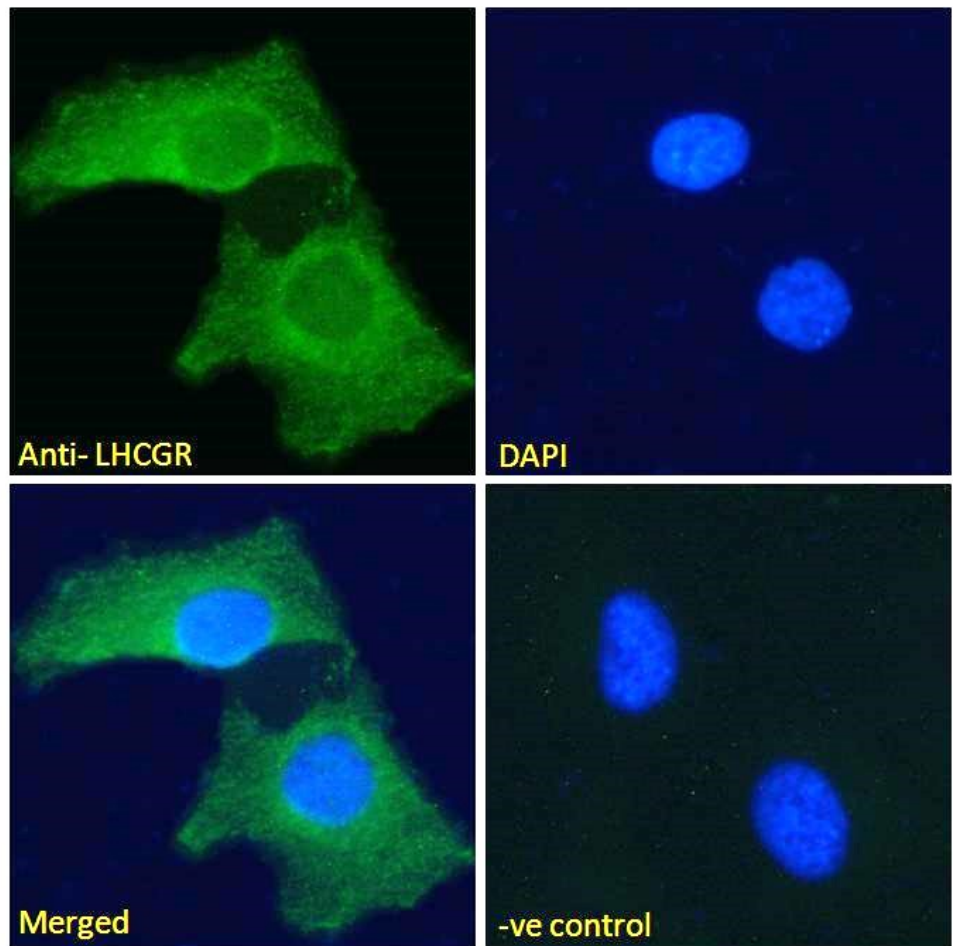
Immunofluorescence: Strong expression of the protein seen in the plasma membranes of HeLa cells. Recommended concentration: 10µg/ml.

Flow Cytometry: Flow cytometric analysis of Jurkat cells. Recommended concentration: 10ug/ml.

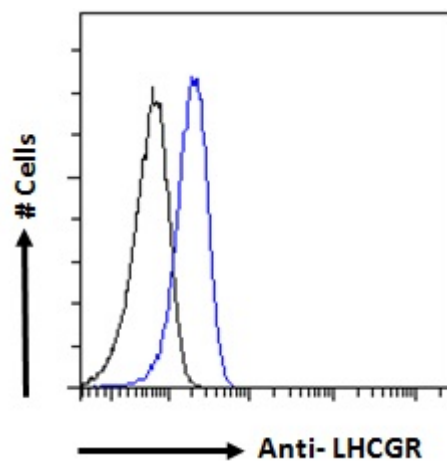
Species Reactivity

Tested: Human

Expected from sequence similarity: Human



EB07460 Immunofluorescence analysis of paraformaldehyde fixed HeLa cells, permeabilized with 0.15% Triton. Primary incubation 1hr (10ug/ml) followed by Alexa Fluor 488 secondary antibody (2ug/ml), showing plasma membrane staining. The nuclear stain is DAPI (blue). Negative control: Unimmunized goat IgG (10ug/ml) followed by Alexa Fluor 488 secondary antibody (2ug/ml).



EB07460 Flow cytometric analysis of paraformaldehyde fixed Jurkat cells (blue line), permeabilized with 0.5% Triton. Primary incubation overnight (10ug/ml) followed by Alexa Fluor 488 secondary antibody (1ug/ml). IgG control: Unimmunized goat IgG (black line) followed by Alexa Fluor 488 secondary antibody.