



International Office

Everest Biotech Ltd

Vector Laboratories, Inc.
6737 Mowry Ave
Newark, CA 94560
United States

Customer Service:

customerservice@vectorlabs.com

Technical Service:

technical@vectorlabs.com

Tel: +1 (800) 227-6666

www.everestbiotech.com

**Research Use Only. Not for
diagnostic or therapeutic use.**

EB08573 - Goat Anti-LHX2 Antibody

Size: 100µg specific antibody in 200µl



Target Protein

Principal Names: LHX2, LIM homeobox 2, LH2, MGC138390, hLhx2, LIM HOX gene 2, LIM homeobox protein 2

Official Symbol: LHX2

Accession Number(s): NP_004780.3

Human GeneID(s): [9355](#)

Immunogen

Peptide with sequence C-NLEGHEPHSPSQ, from the C Terminus of the protein sequence according to NP_004780.3.

Please note the [peptide](#) is available for sale.

Purification and Storage

Purified from goat serum by ammonium sulphate precipitation followed by antigen affinity chromatography using the immunizing peptide.

Supplied at 0.5 mg/ml in Tris saline, 0.02% sodium azide, pH7.3 with 0.5% bovine serum albumin.

Aliquot and store at -20°C. Minimize freezing and thawing.

Applications Tested

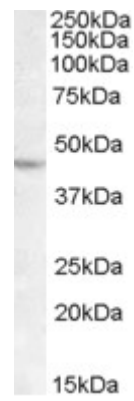
Peptide ELISA: antibody detection limit dilution 1:4000.

Western blot: Approx 45kDa band observed in lysates of cell line Daudi (calculated MW of 44.4kDa according to NP_004780.3). Recommended concentration: 1-3µg/ml.

Species Reactivity

Tested: Human

Expected from sequence similarity: Human, Mouse, Rat, Dog



EB08573 (1µg/ml) staining of DAUDI lysate (35µg protein in RIPA buffer). Primary incubation was 1 hour.
Detected by chemiluminescence.