



## UK Office

### Everest Biotech Ltd

Cherwell Innovation Centre  
77 Heyford Park  
Upper Heyford  
Oxfordshire  
OX25 5HD  
UK

Enquiries:

[info@everestbiotech.com](mailto:info@everestbiotech.com)

Sales:

[sales@everestbiotech.com](mailto:sales@everestbiotech.com)

Tech support:

[support@everestbiotech.com](mailto:support@everestbiotech.com)

Tel: +44 (0)1869 238326

Fax: +44 (0)1869 238327

## US Office

### Everest Biotech c/o Abcore

405 Maple Street, Suite A106  
Ramona,  
CA 92065  
USA

Inquiries:

[info@everestbiotech.com](mailto:info@everestbiotech.com)

Sales:

[usasales@everestbiotech.com](mailto:usasales@everestbiotech.com)

Tech support:

[support@everestbiotech.com](mailto:support@everestbiotech.com)

Tel: 888-320-4628 (toll-free)

Fax: 888-841-9041

[www.everestbiotech.com](http://www.everestbiotech.com)

**Research Use Only. Not for  
diagnostic or therapeutic use.**

## EB11864 - Goat Anti-LIF (aa28-39) Antibody

Size: 100µg specific antibody in 200µl



### Target Protein

**Principal Names:** CDF, cholinergic differentiation factor, D factor, DIA, differentiation inhibitory activity, differentiation stimulating factor, differentiation-inducing factor, differentiation-stimulating factor, hepatocyte-stimulating factor III, HILDA, human interleukin in DA cells, leukemia inhibitory factor, leukemia inhibitory factor (cholinergic differentiation factor), LIF, melanoma-derived LPL inhibitor, MLPLI, OTTHUMP00000198698

**Official Symbol:** LIF

**Accession Number(s):** NP\_002300.1

**Human GeneID(s):** [3976](#)

**Non-Human GeneID(s):** 16878 (mouse), 60584 (rat)

### Immunogen

Peptide with sequence TPVNATCAIRHP, from the internal region of the protein sequence according to NP\_002300.1.

Please note the [peptide](#) is available for sale.

### Purification and Storage

Purified from goat serum by ammonium sulphate precipitation followed by antigen affinity chromatography using the immunizing peptide.

Supplied at 0.5 mg/ml in Tris saline, 0.02% sodium azide, pH7.3 with 0.5% bovine serum albumin.

Aliquot and store at -20°C. Minimize freezing and thawing.

### Applications Tested

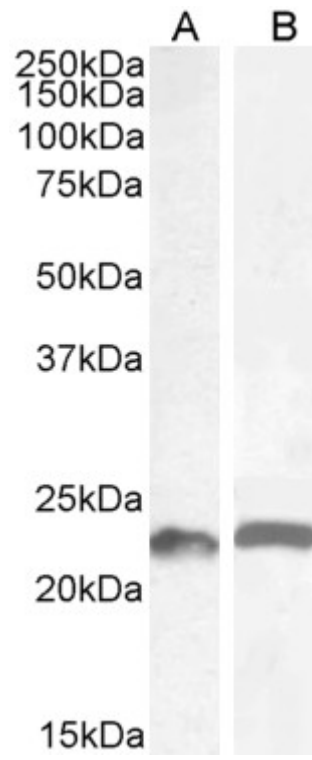
**Peptide ELISA:** antibody detection limit dilution 1:64000.

**Western blot:** Approx 23kDa band observed in Mouse and Rat Colon lysates (calculated MW of 22.3kDa according to Mouse NP\_032527.1 and 22.1kDa according to Rat NP\_071532.2). Recommended concentration: 0.5-1.5µg/ml. Primary incubation 1 hour at room temperature.

### Species Reactivity

**Tested:** Mouse, Rat

**Expected from sequence similarity:** Human, Mouse, Rat



EB11864 (0.5 $\mu$ g/ml) staining of Mouse (A) and (1 $\mu$ g/ml) Rat (B) Colon lysate (35 $\mu$ g protein in RIPA buffer).  
Detected by chemiluminescence.