



## UK Office

### Everest Biotech Ltd

Cherwell Innovation Centre  
77 Heyford Park  
Upper Heyford  
Oxfordshire  
OX25 5HD  
UK

Enquiries:

[info@everestbiotech.com](mailto:info@everestbiotech.com)

Sales:

[sales@everestbiotech.com](mailto:sales@everestbiotech.com)

Tech support:

[support@everestbiotech.com](mailto:support@everestbiotech.com)

Tel: +44 (0)1869 238326

Fax: +44 (0)1869 238327

## US Office

### Everest Biotech c/o Abcore

405 Maple Street, Suite A106  
Ramona,  
CA 92065  
USA

Inquiries:

[info@everestbiotech.com](mailto:info@everestbiotech.com)

Sales:

[usasales@everestbiotech.com](mailto:usasales@everestbiotech.com)

Tech support:

[support@everestbiotech.com](mailto:support@everestbiotech.com)

Tel: 888-320-4628 (toll-free)

Fax: 888-841-9041

[www.everestbiotech.com](http://www.everestbiotech.com)

**Research Use Only. Not for  
diagnostic or therapeutic use.**

## EB11863 - Goat Anti-LIF Antibody

Size: 100µg specific antibody in 200µl



### Target Protein

**Principal Names:** CDF, cholinergic differentiation factor, D factor, DIA, differentiation inhibitory activity, differentiation stimulating factor, differentiation-inducing factor, differentiation-stimulating factor, hepatocyte-stimulating factor III, HILDA, human interleukin in DA cells, leukemia inhibitory factor, leukemia inhibitory factor (cholinergic differentiation factor), LIF, melanoma-derived LPL inhibitor, MLPLI, OTTHUMP00000198698

**Official Symbol:** LIF

**Accession Number(s):** NP\_002300.1

**Human GeneID(s):** [3976](#)

### Immunogen

Peptide with sequence RLCSKYHVGHDVT, from the internal region of the protein sequence according to NP\_002300.1.

Please note the [peptide](#) is available for sale.

### Purification and Storage

Purified from goat serum by ammonium sulphate precipitation followed by antigen affinity chromatography using the immunizing peptide.

Supplied at 0.5 mg/ml in Tris saline, 0.02% sodium azide, pH7.3 with 0.5% bovine serum albumin.

Aliquot and store at -20°C. Minimize freezing and thawing.

### Applications Tested

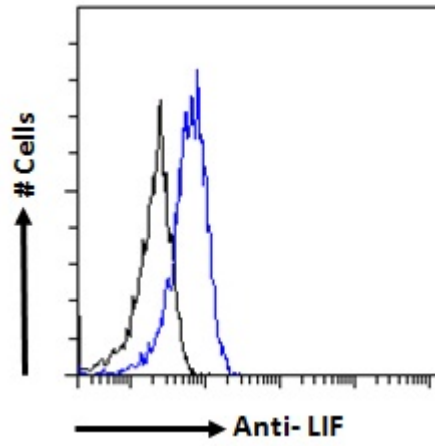
**Peptide ELISA:** antibody detection limit dilution 1:128000.

**Flow Cytometry:** Flow cytometric analysis of HepG2 cells. Recommended concentration: 10ug/ml.

### Species Reactivity

**Tested:** Human

**Expected from sequence similarity:** Human



EB11863 Flow cytometric analysis of paraformaldehyde fixed HepG2 cells (blue line), permeabilized with 0.5% Triton. Primary incubation 1hr (10ug/ml) followed by Alexa Fluor 488 secondary antibody (1ug/ml). IgG control: Unimmunized goat IgG (black line) followed by Alexa Fluor 488 secondary antibody.