



## International Office

### Everest Biotech Ltd

Vector Laboratories, Inc.  
6737 Mowry Ave  
Newark, CA 94560  
United States

Customer Service:

[customerservice@vectorlabs.com](mailto:customerservice@vectorlabs.com)

Technical Service:

[technical@vectorlabs.com](mailto:technical@vectorlabs.com)

Tel: +1 (800) 227-6666

[www.everestbiotech.com](http://www.everestbiotech.com)

**Research Use Only. Not for  
diagnostic or therapeutic use.**

## EB06389 - Goat Anti-Lime1 (mouse) Antibody

Size: 100µg specific antibody in 200µl



### Target Protein

**Principal Names:** Lime1, Lck interacting transmembrane adaptor 1, 2810038K19Rik, LIME, RIKEN cDNA 2810038K19 gene, RP23-60M5.4, OTTMUSP00000018005

**Official Symbol:** Lime1

**Accession Number(s):** NP\_076173.1

**Non-Human GeneID(s):** 72699 (mouse), 362289 (rat)

### Immunogen

Peptide with sequence C-ENVYESIKEMGL, from the C Terminus of the protein sequence according to NP\_076173.1.

Please note the [peptide](#) is available for sale.

### Purification and Storage

Purified from goat serum by ammonium sulphate precipitation followed by antigen affinity chromatography using the immunizing peptide.

Supplied at 0.5 mg/ml in Tris saline, 0.02% sodium azide, pH7.3 with 0.5% bovine serum albumin.

Aliquot and store at -20°C. Minimize freezing and thawing.

### Applications Tested

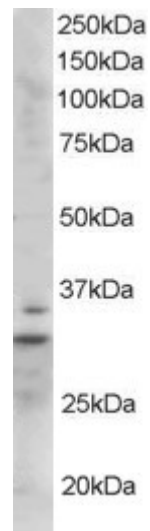
**Peptide ELISA:** antibody detection limit dilution 1:128000.

**Western blot:** Approx 32kDa band observed in Mouse Heart lysates (predicted MW of 31kDa according to NP\_076173.1). Recommended for use at 0.5-2µg/ml.

### Species Reactivity

**Tested:** Mouse

**Expected from sequence similarity:** Mouse, Rat



EB06389 staining (1 $\mu$ g/ml) of Mouse Heart lysate (RIPA buffer, 35 $\mu$ g total protein per lane). Primary incubated for 1 hour. Detected by western blot using chemiluminescence.