

## UK Office

### Everest Biotech Ltd

Cherwell Innovation Centre  
77 Heyford Park  
Upper Heyford  
Oxfordshire  
OX25 5HD  
UK

Enquiries:

[info@everestbiotech.com](mailto:info@everestbiotech.com)

Sales:

[sales@everestbiotech.com](mailto:sales@everestbiotech.com)

Tech support:

[support@everestbiotech.com](mailto:support@everestbiotech.com)

Tel: +44 (0)1869 238326

Fax: +44 (0)1869 238327

## US Office

### Everest Biotech c/o Abcore

405 Maple Street, Suite A106  
Ramona,  
CA 92065  
USA

Inquiries:

[info@everestbiotech.com](mailto:info@everestbiotech.com)

Sales:

[usasales@everestbiotech.com](mailto:usasales@everestbiotech.com)

Tech support:

[support@everestbiotech.com](mailto:support@everestbiotech.com)

Tel: 888-320-4628 (toll-free)

Fax: 888-841-9041

[www.everestbiotech.com](http://www.everestbiotech.com)

**Research Use Only. Not for  
diagnostic or therapeutic use.**

## EB09295 - Goat Anti-LIMP2 / SCARB2 Antibody

Size: 100µg specific antibody in 200µl



### Target Protein

**Principal Names:** SCARB2, scavenger receptor class B, member 2, AMRF, CD36L2, HLGP85, LIMP2, SR-BII, 85 kDa lysosomal sialoglycoprotein scavenger receptor class B, member 2, CD36 antigen (collagen type I receptor, thrombospondin receptor)-like 2 (lysosomal integral membrane protein II), lysosomal integral membrane protein II, EPM4, LGP85, LIMP-2, 85 kDa lysosomal membrane sialoglycoprotein, CD36 antigen-like 2, LIMP II, scavenger receptor class B member 2

**Official Symbol:** SCARB2

**Accession Number(s):** NP\_005497.1

**Human GeneID(s):** [950](#)

**Non-Human GeneID(s):** 12492 (mouse)

**Important Comments:** This antibody is expected to recognize reported isoform 1 (NP\_005497.1) only.

### Immunogen

Peptide with sequence C-NKANIQFGDNGTTIS, from the internal region of the protein sequence according to NP\_005497.1.

Please note the [peptide](#) is available for sale.

### Purification and Storage

Purified from goat serum by ammonium sulphate precipitation followed by antigen affinity chromatography using the immunizing peptide.

Supplied at 0.5 mg/ml in Tris saline, 0.02% sodium azide, pH7.3 with 0.5% bovine serum albumin.

Aliquot and store at -20°C. Minimize freezing and thawing.

### Applications Tested

**Peptide ELISA:** antibody detection limit dilution 1:4000.

**Western blot:** Approx. 80kDa band observed in Human Brain (Cortex and Cerebellum) lysates (calculated MW of 54.3kDa according to NP\_005497.1). The observed molecular weight corresponds to earlier findings in literature with different antibodies (Fujita et al, Biochem Biophys Res Commun. 1992 Apr 30;184(2):604-11.; PMID: 1374238). Recommended concentration: 0.1-0.3µg/ml. Primary incubation was 1 hour. This antibody has been successfully used in WB on Human: Murphy KE et al. (2014) PMID: 24477431.

**IHC:** In paraffin embedded Human Cerebral Cortex shows lysosomal staining.

Recommended concentration, 3-5µg/ml.

### Species Reactivity

**Tested:** Human

**Expected from sequence similarity:** Human, Mouse

### Specific Reference

**This antibody has been successfully used in Western blot on Human:**

Murphy KE, Gysbers AM, Abbott SK, Tayebi N, Kim WS, Sidransky E, Cooper A, Garner B, Halliday GM.

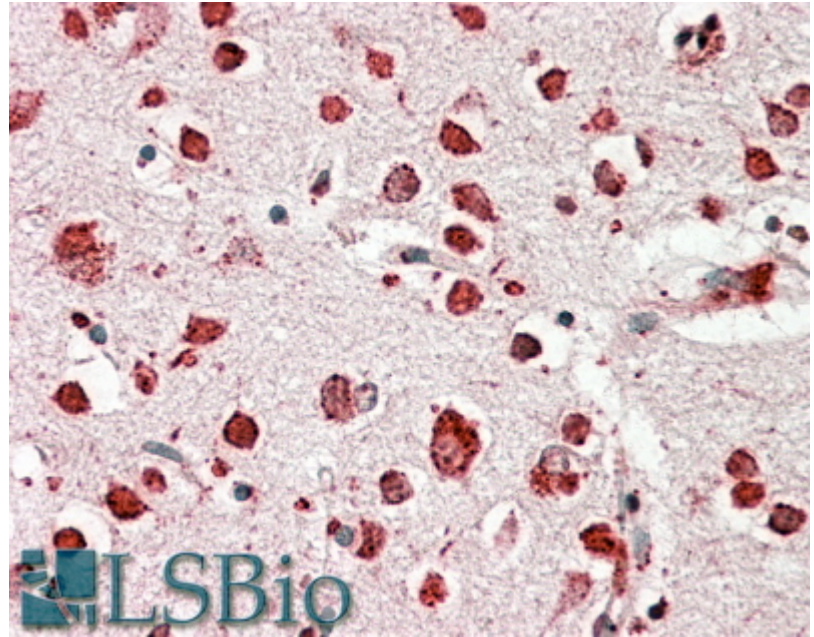
Reduced glucocerebrosidase is associated with increased  $\alpha$ -synuclein in sporadic Parkinson's disease.

Brain. 2014 Mar;137(Pt 3):834-48.





EB09295 (0.1µg/ml) staining of Human Cerebral Cortex lysate (35µg protein in RIPA buffer). Detected by chemiluminescence.



EB09295 (3.8µg/ml) staining of paraffin embedded Human Cerebral Cortex. Steamed antigen retrieval with citrate buffer pH 6, AP-staining.