



International Office

Everest Biotech Ltd

Vector Laboratories, Inc.
6737 Mowry Ave
Newark, CA 94560
United States

Customer Service:

customerservice@vectorlabs.com

Technical Service:

technical@vectorlabs.com

Tel: +1 (800) 227-6666

www.everestbiotech.com

**Research Use Only. Not for
diagnostic or therapeutic use.**

EB08834 - Goat Anti-LIP1 / LKB1IP Antibody

Size: 100µg specific antibody in 200µl



Target Protein

Principal Names: STK11IP, serine/threonine kinase 11 interacting protein, KIAA1898, LIP1, LKB1IP, STK11IP1, LKB1 interacting protein, STK11 interacting protein

Official Symbol: STK11IP

Accession Number(s): NP_443134.2

Human GeneID(s): [114790](#)

Immunogen

Peptide with sequence C-SRGTPNRERKQGEQS, from the internal region of the protein sequence according to NP_443134.2.

Please note the [peptide](#) is available for sale.

Purification and Storage

Purified from goat serum by ammonium sulphate precipitation followed by antigen affinity chromatography using the immunizing peptide.

Supplied at 0.5 mg/ml in Tris saline, 0.02% sodium azide, pH7.3 with 0.5% bovine serum albumin.

Aliquot and store at -20°C. Minimize freezing and thawing.

Applications Tested

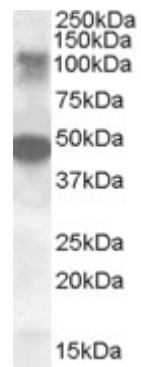
Peptide ELISA: antibody detection limit dilution 1:64000.

Western blot: Approx. 110 kDa band observed in Human Ovary lysates (calculated MW of 121 kDa according to NP_443134.2). Recommended concentration: 0.3-1µg/ml. An additional strong band of unknown identity was also consistently observed at 48 kDa. This band was successfully blocked by incubation with the immunising peptide. We would appreciate any feedback from people in the field - have any such results been reported with other antibodies/lysates? Have any further splice variants/modified forms been reported?

Species Reactivity

Tested: Human

Expected from sequence similarity: Human



EB08834 (0.5µg/ml) staining of Human Ovary lysate (35µg protein in RIPA buffer). Primary incubation was 1 hour. Detected by chemiluminescence.