



## UK Office

### Everest Biotech Ltd

Cherwell Innovation Centre  
77 Heyford Park  
Upper Heyford  
Oxfordshire  
OX25 5HD  
UK

Enquiries:

[info@everestbiotech.com](mailto:info@everestbiotech.com)

Sales:

[sales@everestbiotech.com](mailto:sales@everestbiotech.com)

Tech support:

[support@everestbiotech.com](mailto:support@everestbiotech.com)

Tel: +44 (0)1869 238326

Fax: +44 (0)1869 238327

## US Office

### Everest Biotech c/o Abcore

405 Maple Street, Suite A106  
Ramona,  
CA 92065  
USA

Inquiries:

[info@everestbiotech.com](mailto:info@everestbiotech.com)

Sales:

[usasales@everestbiotech.com](mailto:usasales@everestbiotech.com)

Tech support:

[support@everestbiotech.com](mailto:support@everestbiotech.com)

Tel: 888-320-4628 (toll-free)

Fax: 888-841-9041

[www.everestbiotech.com](http://www.everestbiotech.com)

**Research Use Only. Not for  
diagnostic or therapeutic use.**

## EB06762 - Goat Anti-Lipocalin 2 / NGAL Antibody

Size: 100µg specific antibody in 200µl



### Target Protein

**Principal Names:** NGAL, lipocalin 2 (oncogene 24p3), HGNC:6526, LCN2, uterocalin, oncogenic lipocalin 24p3, neutrophil gelatinase-associated lipocalin, lipocalin 2, MSFI, OTTHUMP00000022240, migration-stimulating factor inhibitor, neutrophil gelatinase-associated lipocalin, oncogene 24p3, siderocalin

**Official Symbol:** LCN2

**Accession Number(s):** NP\_005555.2

**Human GeneID(s):** [3934](#)

### Immunogen

Peptide with sequence C-AILREDKDPQKMY, from the internal region of the protein sequence according to NP\_005555.2.

Please note the [peptide](#) is available for sale.

### Purification and Storage

Purified from goat serum by ammonium sulphate precipitation followed by antigen affinity chromatography using the immunizing peptide.

Supplied at 0.5 mg/ml in Tris saline, 0.02% sodium azide, pH7.3 with 0.5% bovine serum albumin.

Aliquot and store at -20°C. Minimize freezing and thawing.

### Applications Tested

**Peptide ELISA:** antibody detection limit dilution 1:16000.

**Western blot:** Approx 22kDa band observed in Human Kidney lysates (calculated MW of 22.6kDa according to NP\_005555.2). Recommended concentration: 0.01-0.03µg/ml.

**IHC:** In paraffin embedded Human Spleen shows staining of cytoplasm in mostly binucleated cells, and of nucleoli in some of the non-dividing cells. Recommended concentration: 2-3µg/ml.

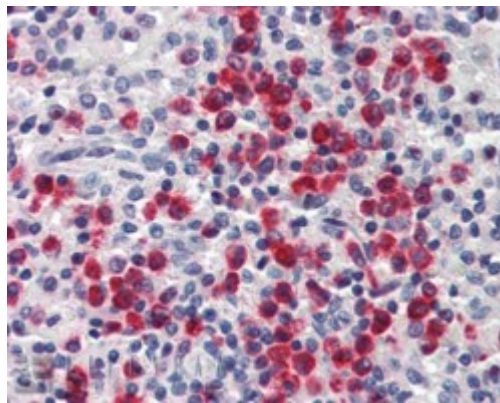
### Species Reactivity

**Tested:** Human

**Expected from sequence similarity:** Human



EB06762 (0.03 $\mu$ g/ml) staining of Human Kidney lysate (35 $\mu$ g protein in RIPA buffer). Primary incubation was 1 hour. Detected by chemiluminescence.



EB06762 (2.5 $\mu$ g/ml) staining of paraffin embedded Human Spleen. Steamed antigen retrieval with citrate buffer pH 6, AP-staining.