



## UK Office

### Everest Biotech Ltd

Cherwell Innovation Centre  
77 Heyford Park  
Upper Heyford  
Oxfordshire  
OX25 5HD  
UK

Enquiries:

[info@everestbiotech.com](mailto:info@everestbiotech.com)

Sales:

[sales@everestbiotech.com](mailto:sales@everestbiotech.com)

Tech support:

[support@everestbiotech.com](mailto:support@everestbiotech.com)

Tel: +44 (0)1869 238326

Fax: +44 (0)1869 238327

## US Office

### Everest Biotech c/o Abcore

405 Maple Street, Suite A106  
Ramona,  
CA 92065  
USA

Inquiries:

[info@everestbiotech.com](mailto:info@everestbiotech.com)

Sales:

[usasales@everestbiotech.com](mailto:usasales@everestbiotech.com)

Tech support:

[support@everestbiotech.com](mailto:support@everestbiotech.com)

Tel: 888-320-4628 (toll-free)

Fax: 888-841-9041

[www.everestbiotech.com](http://www.everestbiotech.com)

**Research Use Only. Not for  
diagnostic or therapeutic use.**

## EB08099 - Goat Anti-LITAF Antibody

Size: 100µg specific antibody in 200µl



### Target Protein

**Principal Names:** LITAF, lipopolysaccharide-induced TNF factor, CMT1C, FLJ38636, MGC116698, MGC116700, MGC116701, MGC125274, MGC125275, MGC125276, PIG7, SIMPLE, TP53I7, LPS-induced TNF-alpha factor, small integral membrane protein of lysosome/late endosome, tumor protein

**Official Symbol:** LITAF

**Accession Number(s):** NP\_004853.2; NP\_001129945.1

**Human GeneID(s):** [9516](#)

**Non-Human GeneID(s):** 56722 (mouse), 65161 (rat)

**Important Comments:** This antibody is expected to crossreact with both reported isoforms (NP\_004853.2; NP\_001129945.1).

### Immunogen

Peptide with sequence C-PDGKGMNPPSYTQ, from the internal region of the protein sequence according to NP\_004853.2; NP\_001129945.1.

Please note the [peptide](#) is available for sale.

### Purification and Storage

Purified from goat serum by ammonium sulphate precipitation followed by antigen affinity chromatography using the immunizing peptide.

Supplied at 0.5 mg/ml in Tris saline, 0.02% sodium azide, pH7.3 with 0.5% bovine serum albumin.

Aliquot and store at -20°C. Minimize freezing and thawing.

### Applications Tested

**Peptide ELISA:** antibody detection limit dilution 1:8000.

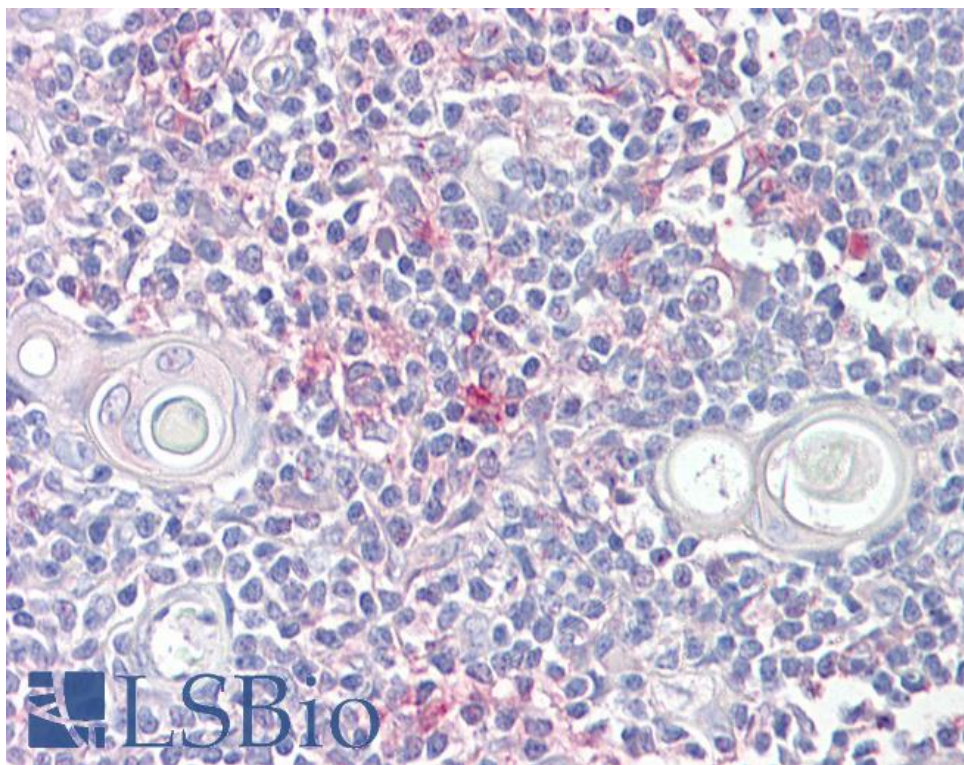
**Western blot:** Preliminary experiments gave an approx 25kDa band in Human Lymph Node lysates and in lysates of cell lines HeLa and HepG2 after 0.1µg/ml antibody staining. Please note that currently we cannot find an explanation in the literature for the band we observe given the calculated size of 17.1kDa according to NP\_004853.2. The 25kDa band was successfully blocked by incubation with the immunizing peptide.

**IHC:** Paraffin embedded Human Thymus. Recommended concentration: 6.5µg/ml.

### Species Reactivity

**Tested:** Human

**Expected from sequence similarity:** Human, Mouse, Rat



EB08099 (6.5µg/ml) staining of paraffin embedded Human Thymus. Steamed antigen retrieval with citrate buffer pH 6, AP-staining.