



UK Office

Everest Biotech Ltd

Cherwell Innovation Centre
77 Heyford Park
Upper Heyford
Oxfordshire
OX25 5HD
UK

Enquiries:

info@everestbiotech.com

Sales:

sales@everestbiotech.com

Tech support:

support@everestbiotech.com

Tel: +44 (0)1869 238326

Fax: +44 (0)1869 238327

US Office

Everest Biotech c/o Abcore

405 Maple Street, Suite A106
Ramona,
CA 92065
USA

Inquiries:

info@everestbiotech.com

Sales:

usasales@everestbiotech.com

Tech support:

support@everestbiotech.com

Tel: 888-320-4628 (toll-free)

Fax: 888-841-9041

www.everestbiotech.com

**Research Use Only. Not for
diagnostic or therapeutic use.**

EB05088 - Goat Anti-LIVIN / BIRC7 Antibody

Size: 100µg specific antibody in 200µl



Target Protein

Principal Names: BIRC7, LIVIN, baculoviral IAP repeat-containing 7 (livin), KIAP, MLIAP, mliap, ML-IAP, livin inhibitor-of-apoptosis, kidney inhibitor of apoptosis protein, melanoma inhibitor of apoptosis protein, baculoviral IAP repeat-containing protein 7, RNF50, livin inhibitor of apoptosis

Official Symbol: BIRC7

Accession Number(s): NP_647478.1; NP_071444.1

Human GeneID(s): [79444](#)

Important Comments: This antibody is expected to recognise both reported isoforms (as represented by NP_647478.1 and NP_071444.1)

Immunogen

Peptide with sequence C-RAPVRSRVRT, from the C Terminus of the protein sequence according to NP_647478.1; NP_071444.1.

Please note the [peptide](#) is available for sale.

Purification and Storage

Purified from goat serum by ammonium sulphate precipitation followed by antigen affinity chromatography using the immunizing peptide.

Supplied at 0.5 mg/ml in Tris saline, 0.02% sodium azide, pH7.3 with 0.5% bovine serum albumin.

Aliquot and store at -20°C. Minimize freezing and thawing.

Applications Tested

Peptide ELISA: antibody detection limit dilution 1:4000.

Western blot: Approx 30kDa and 35kDa in lysates of cell line MOLT4, and 30kDa in lysates of Daudi, Jurkat and K562. These bands correspond to the reported isoforms with calculated MW of 32.8kDa according to NP_647478.1 and 30.9kDa according to NP_071444.1. Recommended concentration: 0.3 - 1 µg/ml.

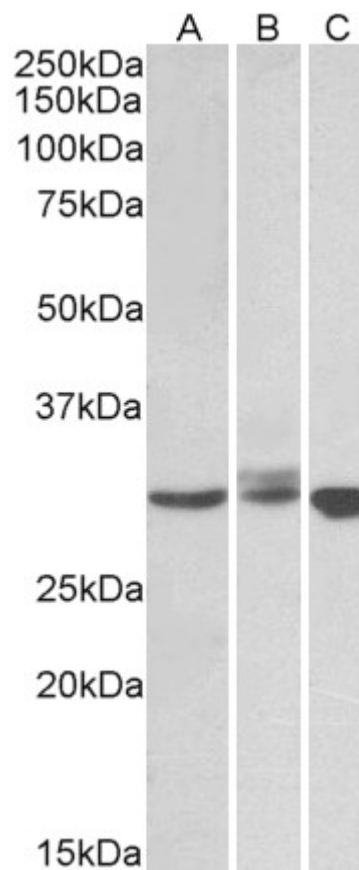
Species Reactivity

Tested: Human

Expected from sequence similarity: Human



EB05088 staining (0.3 μ g/ml) of MOLT4 lysate (35 μ g protein in RIPA buffer). Primary incubation was 1 hour.
Detected by chemiluminescence.



EB05088 staining (0.5 μ g/ml) of Daudi (A), Jurkat (B) and K562 (C) lysates (35 μ g protein in RIPA buffer). Primary incubation was 1 hour. Detected by chemiluminescence.