



## International Office

### Everest Biotech Ltd

Vector Laboratories, Inc.  
6737 Mowry Ave  
Newark, CA 94560  
United States

Customer Service:

[customerservice@vectorlabs.com](mailto:customerservice@vectorlabs.com)

Technical Service:

[technical@vectorlabs.com](mailto:technical@vectorlabs.com)

Tel: +1 (800) 227-6666

[www.everestbiotech.com](http://www.everestbiotech.com)

**Research Use Only. Not for  
diagnostic or therapeutic use.**

## EB06212 - Goat Anti-LMO7 / FBXO20 Antibody

Size: 100µg specific antibody in 200µl



### Target Protein

**Principal Names:** LMO7, FBXO20, LOMP, FBX20, KIAA0858, LIM domain only 7, LOMP protein, F-box protein Fbx20, F-box only protein 20, zinc-finger domain-containing protein, RP11-332E3.2

**Official Symbol:** LMO7

**Accession Number(s):** AAD33924.1

**Human GeneID(s):** [4008](#)

**Important Comments:** Please note that the amino acid sequence of the immunizing peptide differs one amino acid from the current NCBI accession numbers (NP\_005349.3, NP\_056667.2). This antibody is expected to recognise both reported isoforms (NP\_005349.3; NP\_056667.2).

### Immunogen

Peptide with sequence ESTCVSASLPRS, from the internal region of the protein sequence according to AAD33924.1.

Please note the [peptide](#) is available for sale.

### Purification and Storage

Purified from goat serum by ammonium sulphate precipitation followed by antigen affinity chromatography using the immunizing peptide.

Supplied at 0.5 mg/ml in Tris saline, 0.02% sodium azide, pH7.3 with 0.5% bovine serum albumin.

Aliquot and store at -20°C. Minimize freezing and thawing.

### Applications Tested

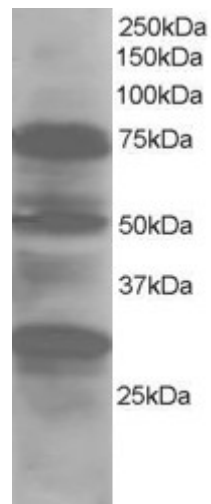
**Peptide ELISA:** antibody detection limit dilution 1:32000.

**Western blot:** Approx 70-75kDa band and approx 30kDa band observed in Human Lung lysates (predicted MWs of 92kDa according to AAD33924.1 - however our result agrees with Putilina et al as below). A minor band of unknown identity was also consistently observed at approx 50kDa. Recommended for use at 0.5-2µg/ml.

### Species Reactivity

**Tested:** Human

**Expected from sequence similarity:** Human, Mouse, Rat, Dog



EB06212 staining (1 $\mu$ g/ml) of Human Lung lysate (RIPA buffer, 30 $\mu$ g total protein per lane). Primary incubated for 1 hour. Detected by western blot using chemiluminescence.