



UK Office

Everest Biotech Ltd

Cherwell Innovation Centre
77 Heyford Park
Upper Heyford
Oxfordshire
OX25 5HD
UK

Enquiries:

info@everestbiotech.com

Sales:

sales@everestbiotech.com

Tech support:

support@everestbiotech.com

Tel: +44 (0)1869 238326

www.everestbiotech.com

**Research Use Only. Not for
diagnostic or therapeutic use.**

EB10304 - Goat Anti-LMTK2 Antibody

Size: 100µg specific antibody in 200µl



Target Protein

Principal Names: AATYK2, apoptosis-associated tyrosine kinase 2, brain-enriched kinase, BREK, cprk, cyclin-dependent kinase 5/p35-regulated kinase, FLJ46659, KIAA1079, kinase phosphatase inhibitor 2, KPI2, KPI-2, lemur tyrosine kinase 2, LMR2, LMTK2

Official Symbol: LMTK2

Accession Number(s): NP_055731.2

Human GeneID(s): [22853](#)

Non-Human GeneID(s): 231876 (mouse), 304286 (rat)

Immunogen

Peptide with sequence RCINSESSTD, from the internal region of the protein sequence according to NP_055731.2.

Please note the [peptide](#) is available for sale.

Purification and Storage

Purified from goat serum by ammonium sulphate precipitation followed by antigen affinity chromatography using the immunizing peptide.

Supplied at 0.5 mg/ml in Tris saline, 0.02% sodium azide, pH7.3 with 0.5% bovine serum albumin.

Aliquot and store at -20°C. Minimize freezing and thawing.

Applications Tested

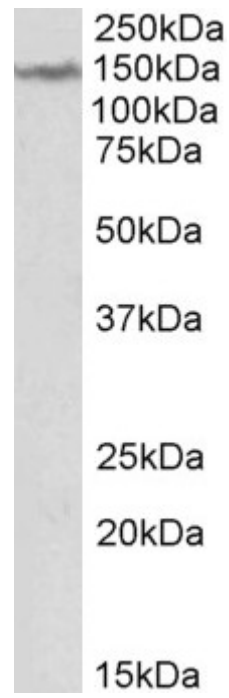
Peptide ELISA: antibody detection limit dilution 1:1000.

Western blot: Approx 150kDa band observed in Human Brain (Cerebellum) lysates (calculated MW of 165kDa according to NP_055731.2). Recommended concentration: 1-3µg/ml.

Species Reactivity

Tested: Human

Expected from sequence similarity: Human, Mouse, Rat, Dog



EB10304 (2 μ g/ml) staining of Human Cerebellum lysate (35 μ g protein in RIPA buffer). Primary incubation was 1 hour. Detected by chemiluminescence.