



International Office

Everest Biotech Ltd

Vector Laboratories, Inc.
6737 Mowry Ave
Newark, CA 94560
United States

Customer Service:

customerservice@vectorlabs.com

Technical Service:

technical@vectorlabs.com

Tel: +1 (800) 227-6666

www.everestbiotech.com

**Research Use Only. Not for
diagnostic or therapeutic use.**

EB08844 - Goat Anti-LMX1B Antibody

Size: 100µg specific antibody in 200µl



Target Protein

Principal Names: LMX1B, LIM homeobox transcription factor 1, beta, LMX1.2, MGC138325, MGC142051, NPS1, LIM homeo box transcription factor 1, beta

Official Symbol: LMX1B

Accession Number(s): NP_002307.1

Human GeneID(s): [4010](#)

Non-Human GeneID(s): 16917 (mouse), 114501 (rat)

Immunogen

Peptide with sequence QQALTTSCYFRDRK , from the internal region of the protein sequence according to NP_002307.1.

Please note the [peptide](#) is available for sale.

Purification and Storage

Purified from goat serum by ammonium sulphate precipitation followed by antigen affinity chromatography using the immunizing peptide.

Supplied at 0.5 mg/ml in Tris saline, 0.02% sodium azide, pH7.3 with 0.5% bovine serum albumin.

Aliquot and store at -20°C. Minimize freezing and thawing.

Applications Tested

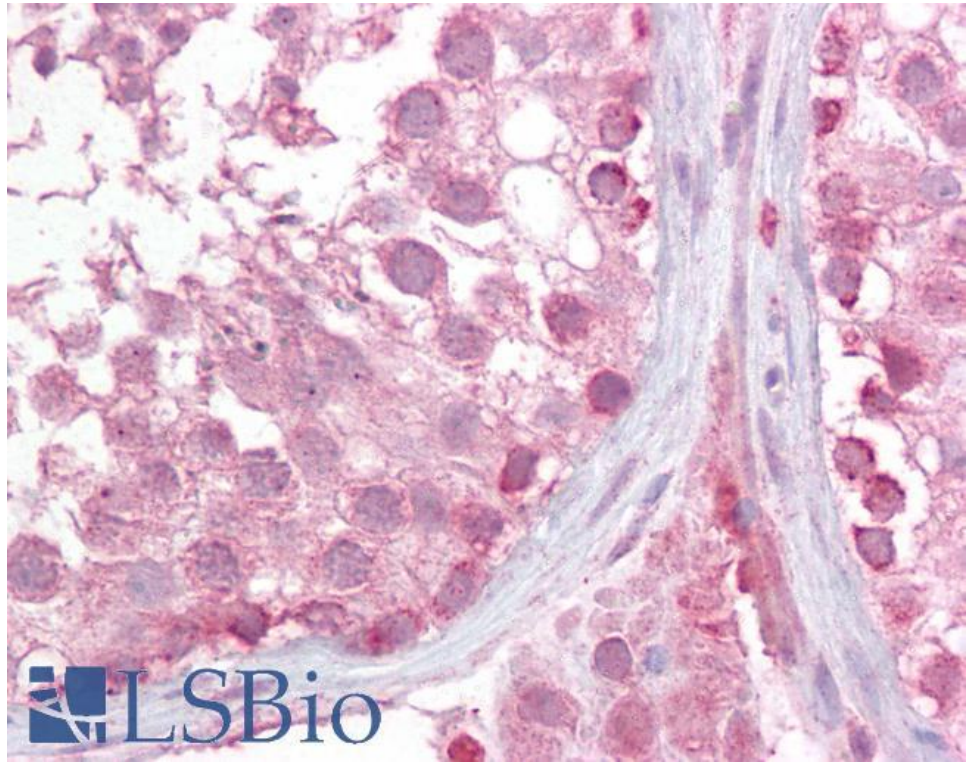
Peptide ELISA: antibody detection limit dilution 1:64000.

IHC: Paraffin embedded Human Testis. Recommended concentration: 2.5µg/ml.

Species Reactivity

Tested: Human

Expected from sequence similarity: Human, Mouse, Rat



EB08844 (2.5µg/ml) staining of paraffin embedded Human Testis. Steamed antigen retrieval with citrate buffer pH 6, AP-staining.