



## UK Office

### Everest Biotech Ltd

Cherwell Innovation Centre  
77 Heyford Park  
Upper Heyford  
Oxfordshire  
OX25 5HD  
UK

Enquiries:

[info@everestbiotech.com](mailto:info@everestbiotech.com)

Sales:

[sales@everestbiotech.com](mailto:sales@everestbiotech.com)

Tech support:

[support@everestbiotech.com](mailto:support@everestbiotech.com)

Tel: +44 (0)1869 238326

Fax: +44 (0)1869 238327

## US Office

### Everest Biotech c/o Abcore

405 Maple Street, Suite A106  
Ramona,  
CA 92065  
USA

Inquiries:

[info@everestbiotech.com](mailto:info@everestbiotech.com)

Sales:

[usasales@everestbiotech.com](mailto:usasales@everestbiotech.com)

Tech support:

[support@everestbiotech.com](mailto:support@everestbiotech.com)

Tel: 888-320-4628 (toll-free)

Fax: 888-841-9041

[www.everestbiotech.com](http://www.everestbiotech.com)

**Research Use Only. Not for  
diagnostic or therapeutic use.**

## EB06454 - Goat Anti-LNK / SH2B3 Antibody

Size: 100µg specific antibody in 200µl



### Target Protein

**Principal Names:** SH2B3, LNK, SH2B adaptor protein 3, lymphocyte adaptor protein

**Official Symbol:** SH2B3

**Accession Number(s):** NP\_005466.1

**Human GeneID(s):** [10019](#)

### Immunogen

Peptide with sequence NGPALQPSSPC, from the N Terminus of the protein sequence according to NP\_005466.1.

Please note the [peptide](#) is available for sale.

### Purification and Storage

Purified from goat serum by ammonium sulphate precipitation followed by antigen affinity chromatography using the immunizing peptide.

Supplied at 0.5 mg/ml in Tris saline, 0.02% sodium azide, pH7.3 with 0.5% bovine serum albumin.

Aliquot and store at -20°C. Minimize freezing and thawing.

### Applications Tested

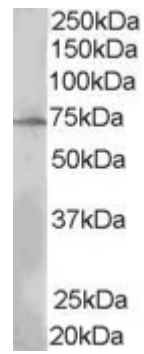
**Peptide ELISA:** antibody detection limit dilution 1:64000.

**Western blot:** Approx 70kDa band observed in lysates of cell line MOLT4 (calculated MW of 63.2kDa according to NP\_005466.1). In transfected HEK293 transiently expressing SH2B3 a band of approx. 65kDa is observed. This band is not observed in the non-transfected HEK293. Recommended concentration: 0.3-1.0 µg/ml.

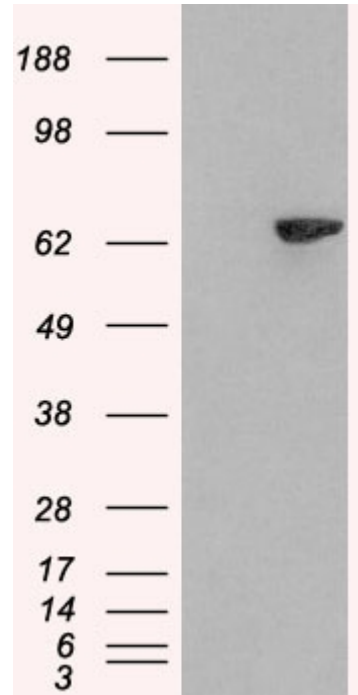
### Species Reactivity

**Tested:** Human

**Expected from sequence similarity:** Human



EB06454 (0.3µg/ml) staining of MOLT4 lysate (35µg protein in RIPA buffer). Primary incubation was 1 hour.  
Detected by chemiluminescence.



HEK293 overexpressing SH2B3 (RC218359) and probed with EB06454 (mock transfection in first lane), tested  
by Origene.