



UK Office

Everest Biotech Ltd

Cherwell Innovation Centre
77 Heyford Park
Upper Heyford
Oxfordshire
OX25 5HD
UK

Enquiries:

info@everestbiotech.com

Sales:

sales@everestbiotech.com

Tech support:

support@everestbiotech.com

Tel: +44 (0)1869 238326

Fax: +44 (0)1869 238327

US Office

Everest Biotech c/o Abcore

405 Maple Street, Suite A106
Ramona,
CA 92065
USA

Inquiries:

info@everestbiotech.com

Sales:

usasales@everestbiotech.com

Tech support:

support@everestbiotech.com

Tel: 888-320-4628 (toll-free)

Fax: 888-841-9041

www.everestbiotech.com

**Research Use Only. Not for
diagnostic or therapeutic use.**

EB06771 - Goat Anti-LRP5 Antibody

Size: 100µg specific antibody in 200µl



Target Protein

Principal Names: LRP5, low density lipoprotein receptor-related protein 5, HGNC:6697, BMND1, HBM, LR3, LRP7, OPGG, OPS, VBCH2, low density lipoprotein receptor-related protein 7, osteoporosis pseudoglioma syndrome, EVR1, EVR4, exudative vitreoretinopathy 1

Official Symbol: LRP5

Accession Number(s): NP_002326.2

Human GeneID(s): [4041](#)

Immunogen

Peptide with sequence C-ERVEKTTGDKRT, from the internal region of the protein sequence according to NP_002326.2.

Please note the [peptide](#) is available for sale.

Purification and Storage

Purified from goat serum by ammonium sulphate precipitation followed by antigen affinity chromatography using the immunizing peptide.

Supplied at 0.5 mg/ml in Tris saline, 0.02% sodium azide, pH7.3 with 0.5% bovine serum albumin.

Aliquot and store at -20°C. Minimize freezing and thawing.

Applications Tested

Peptide ELISA: antibody detection limit dilution 1:16000.

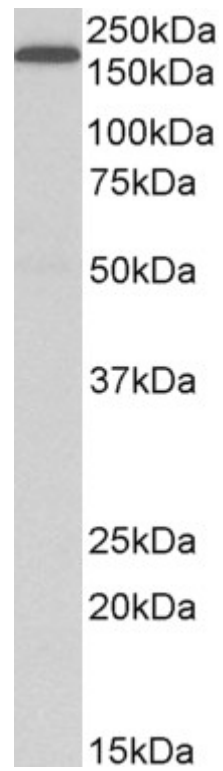
Western blot: Approx 180kDa band observed in lysates of cell line HepG2 (calculated MW of 179kDa according to NP_002326.2). Recommended concentration: 1-3µg/ml. Primary incubation was 1 hour. Preliminary testing was unsuccessful on Mouse Liver for this particular batch.

IHC: In paraffin embedded Human Liver shows weak cytoplasm staining in some hepatocytes. Recommended concentration: 2-4µg/ml.

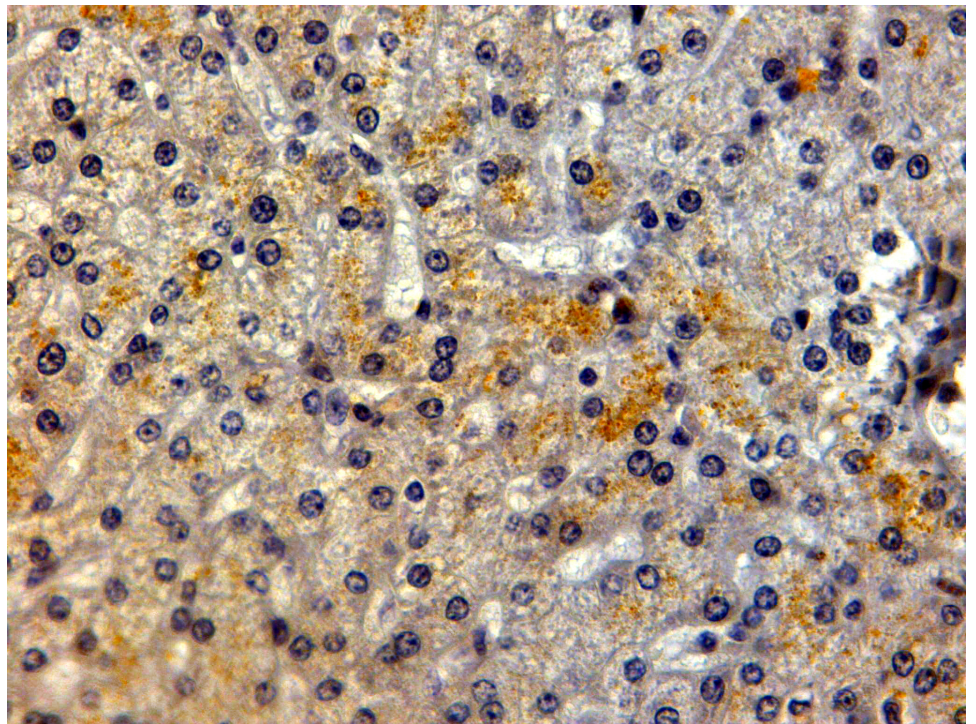
Species Reactivity

Tested: Human

Expected from sequence similarity: Human, Mouse, Rat



EB06771 (1 μ g/ml) staining of HepG2 lysate (35 μ g protein in RIPA buffer). Detected by chemiluminescence.



EB06771 (2 μ g/ml) staining of paraffin embedded Human Liver. Steamed antigen retrieval with citrate buffer pH 6, HRP-staining.