

UK Office

Everest Biotech Ltd

Cherwell Innovation Centre
77 Heyford Park
Upper Heyford
Oxfordshire
OX25 5HD
UK

Enquiries:

info@everestbiotech.com

Sales:

sales@everestbiotech.com

Tech support:

support@everestbiotech.com

Tel: +44 (0)1869 238326

www.everestbiotech.com

**Research Use Only. Not for
diagnostic or therapeutic use.**

EB08987 - Goat Anti-LTF Antibody

Size: 100µg specific antibody in 200µl



Target Protein

Principal Names: LTF, lactotransferrin, GIG12, HLF2, LF, growth-inhibiting protein 12, lactoferrin, neutrophil lactoferrin, talalactoferrin

Official Symbol: LTF

Accession Number(s): NP_002334.2

Human GeneID(s): [4057](#)

Immunogen

Peptide with sequence C-ENYKSQQSSDPDP, from the internal region of the protein sequence according to NP_002334.2.

Please note the [peptide](#) is available for sale.

Purification and Storage

Purified from goat serum by ammonium sulphate precipitation followed by antigen affinity chromatography using the immunizing peptide.

Supplied at 0.5 mg/ml in Tris saline, 0.02% sodium azide, pH7.3 with 0.5% bovine serum albumin.

Aliquot and store at -20°C. Minimize freezing and thawing.

Applications Tested

Peptide ELISA: antibody detection limit dilution 1:32000.

Western blot: Approx. 85kDa band observed in Human Peripheral Mononucleocyte lysates (calculated MW of 78.2kDa according to NP_002334.2). Recommended concentration: 0.05-0.2µg/ml. This antibody has been successfully used in WB on Human: Heinz Möller et al. (2011) Journal of Carbohydrate Chemistry, 30:4-6, 334-346.

IHC: In paraffin embedded blood vessel shows strong staining of cytoplasm of neutrophils.. Recommended concentration, 2-4µg/ml.

Species Reactivity

Tested: Human

Expected from sequence similarity: Human

Specific Reference

This antibody has been successfully used in Western blot on Human:

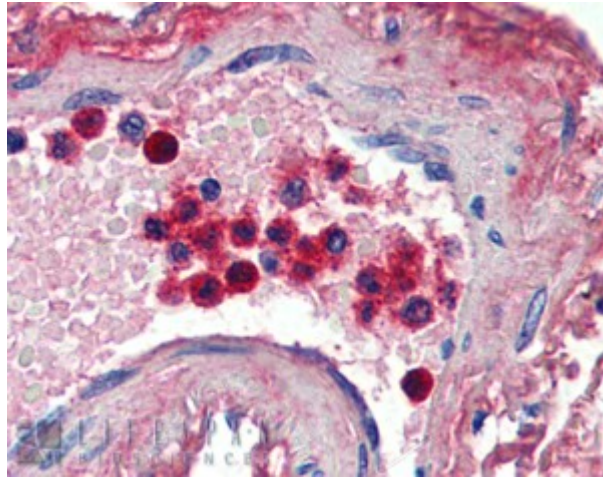
Heinz Möller, Verena Böhrsch, Christian P. R. Hackenberger & Stephan Hinderlich
N-Azidoacetylmannosamine and NAzidoacetylgalactosamine Incorporation into N-Glycans of Recombinantly Expressed Human Lactotransferrin by Metabolic Oligosaccharide Engineering

Journal of Carbohydrate Chemistry, 30:4-6, 334-346 (2011)

PMID: 0



EB08987 (0.05 μ g/ml) staining of Peripheral Blood Mononucleocyte lysate (35 μ g protein in RIPA buffer). Primary incubation was 1 hour. Detected by chemiluminescence.



EB08987 (2 μ g/ml) staining of paraffin embedded Human Blood Vessel. Steamed antigen retrieval with citrate buffer pH 6, AP-staining.