



International Office

Everest Biotech Ltd

Vector Laboratories, Inc.
6737 Mowry Ave
Newark, CA 94560
United States

Customer Service:

customerservice@vectorlabs.com

Technical Service:

technical@vectorlabs.com

Tel: +1 (800) 227-6666

www.everestbiotech.com

**Research Use Only. Not for
diagnostic or therapeutic use.**

EB08406 - Goat Anti-LYPLAL1 Antibody

Size: 100µg specific antibody in 200µl



Target Protein

Principal Names: LYPLAL1, lysophospholipase-like 1, KIAA1238

Official Symbol: LYPLAL1

Accession Number(s): NP_620149.1

Human GeneID(s): [127018](#)

Immunogen

Peptide with sequence DRFKITNDCPEHLE, from the internal region of the protein sequence according to NP_620149.1.

Please note the [peptide](#) is available for sale.

Purification and Storage

Purified from goat serum by ammonium sulphate precipitation followed by antigen affinity chromatography using the immunizing peptide.

Supplied at 0.5 mg/ml in Tris saline, 0.02% sodium azide, pH7.3 with 0.5% bovine serum albumin.

Aliquot and store at -20°C. Minimize freezing and thawing.

Applications Tested

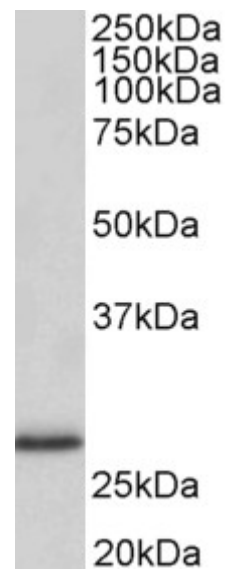
Peptide ELISA: antibody detection limit dilution 1:32000.

Western blot: Approx. 27kDa band observed in Human Adipose, Heart and Kidney lysates (calculated MW of 26.3kDa according to NP_620149.1). Recommended concentration: 1.5-3.0µg/ml. Primary incubation was 1 hour.

Species Reactivity

Tested: Human

Expected from sequence similarity: Human



EB08406 (1.5µg/ml) staining of Human Adipose lysate (35µg protein in RIPA buffer). Detected by chemiluminescence.