



## UK Office

### Everest Biotech Ltd

Cherwell Innovation Centre  
77 Heyford Park  
Upper Heyford  
Oxfordshire  
OX25 5HD  
UK

Enquiries:

[info@everestbiotech.com](mailto:info@everestbiotech.com)

Sales:

[sales@everestbiotech.com](mailto:sales@everestbiotech.com)

Tech support:

[support@everestbiotech.com](mailto:support@everestbiotech.com)

Tel: +44 (0)1869 238326

[www.everestbiotech.com](http://www.everestbiotech.com)

**Research Use Only. Not for  
diagnostic or therapeutic use.**

## EB06634 - Goat Anti-Lysosomal hyaluronidase Antibody

Size: 100µg specific antibody in 200µl



### Target Protein

**Principal Names:** HYAL2, LUCA2, LuCa-2, hyaluronoglucosaminidase 2, PH-20 homolog, hyaluronidase 2, lysosomal hyaluronidase

**Official Symbol:** HYAL2

**Accession Number(s):** NP\_003764.3

**Human GeneID(s):** [8692](#)

**Important Comments:** Reported variants NP\_003764 and NP\_149348 represent identical proteins.

### Immunogen

Peptide with sequence RAGPGPTVTLAC, from the N Terminus of the protein sequence according to NP\_003764.3.

Please note the [peptide](#) is available for sale.

### Purification and Storage

Purified from goat serum by ammonium sulphate precipitation followed by antigen affinity chromatography using the immunizing peptide.

Supplied at 0.5 mg/ml in Tris saline, 0.02% sodium azide, pH7.3 with 0.5% bovine serum albumin.

Aliquot and store at -20°C. Minimize freezing and thawing.

### Applications Tested

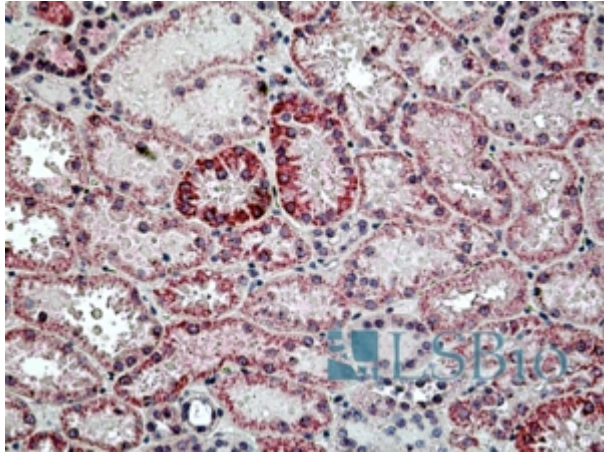
**Peptide ELISA:** antibody detection limit dilution 1:32000.

**IHC:** In paraffin embedded Human Kidney shows cytoplasm staining in DCT cells. Recommended concentration, 3-6µg/ml.

### Species Reactivity

**Tested:** Human

**Expected from sequence similarity:** Human



EB06634 (3.8µg/ml) staining of paraffin embedded Human Kidney. Steamed antigen retrieval with citrate buffer pH 6, AP-staining.