



UK Office

Everest Biotech Ltd

Cherwell Innovation Centre
77 Heyford Park
Upper Heyford
Oxfordshire
OX25 5HD
UK

Enquiries:

info@everestbiotech.com

Sales:

sales@everestbiotech.com

Tech support:

support@everestbiotech.com

Tel: +44 (0)1869 238326

www.everestbiotech.com

**Research Use Only. Not for
diagnostic or therapeutic use.**

EB12641 - Goat Anti-lysyl oxidase Antibody

Size: 100µg specific antibody in 200µl



Target Protein

Principal Names: LOX, lysyl oxidase, protein-lysine 6-oxidase

Official Symbol: LOX

Accession Number(s): NP_002308.2; NP_001171573.1

Human GeneID(s): [4015](#)

Important Comments: This antibody is expected to recognize both reported isoforms (NP_002308.2; NP_001171573.1).

Immunogen

Peptide with sequence C-STAYRADVRDYDHR, from the internal region of the protein sequence according to NP_002308.2; NP_001171573.1.

Please note the [peptide](#) is available for sale.

Purification and Storage

Purified from goat serum by ammonium sulphate precipitation followed by antigen affinity chromatography using the immunizing peptide.

Supplied at 0.5 mg/ml in Tris saline, 0.02% sodium azide, pH7.3 with 0.5% bovine serum albumin.

Aliquot and store at -20°C. Minimize freezing and thawing.

Applications Tested

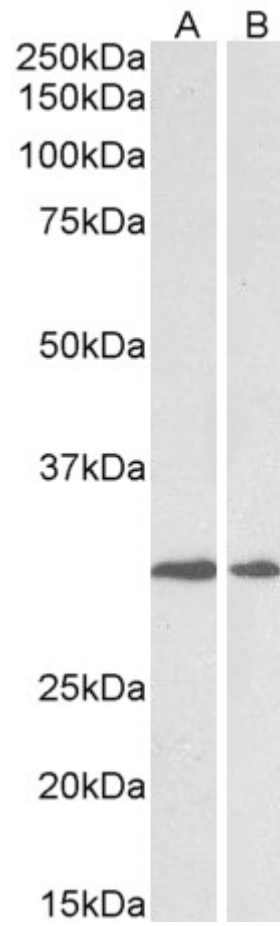
Peptide ELISA: antibody detection limit dilution 1:128000.

Western blot: Approx 30-33kDa band observed in Human Heart and Human Placenta lysates (calculated MW of 46.9kDa according to NP_002308.2). The observed molecular weight corresponds to earlier findings in literature with different antibodies (Kuivaniemi et al, J Biol Chem. 1984 Jun 10;259(11):6996-7002). Recommended concentration: 0.3-1µg/ml.

Species Reactivity

Tested: Human

Expected from sequence similarity: Human, Pig



EB12641 (0.5 μ g/ml) staining of Human Heart (A) and Placenta (B) lysates (35 μ g protein in RIPA buffer). Primary incubation was 1 hour. Detected by chemiluminescence.