



## International Office

### Everest Biotech Ltd

Vector Laboratories, Inc.  
6737 Mowry Ave  
Newark, CA 94560  
United States

Customer Service:

[customerservice@vectorlabs.com](mailto:customerservice@vectorlabs.com)

Technical Service:

[technical@vectorlabs.com](mailto:technical@vectorlabs.com)

Tel: +1 (800) 227-6666

[www.everestbiotech.com](http://www.everestbiotech.com)

**Research Use Only. Not for  
diagnostic or therapeutic use.**

## EB07398 - Goat Anti-M1 mAChR / CHRM1 Antibody

Size: 100µg specific antibody in 200µl



### Target Protein

**Principal Names:** CHRM1, M1 mAChR, cholinergic receptor, muscarinic 1, HM1, M1, MGC30125, muscarinic acetylcholine receptor M1

**Official Symbol:** CHRM1

**Accession Number(s):** NP\_000729.2

**Human GeneID(s):** [1128](#)

**Non-Human GeneID(s):** 12669 (mouse), 25229 (rat)

### Immunogen

Peptide with sequence C-DKRRWRKIPKRPGSVH, from the C Terminus of the protein sequence according to NP\_000729.2.

Please note the [peptide](#) is available for sale.

### Purification and Storage

Purified from goat serum by ammonium sulphate precipitation followed by antigen affinity chromatography using the immunizing peptide.

Supplied at 0.5 mg/ml in Tris saline, 0.02% sodium azide, pH7.3 with 0.5% bovine serum albumin.

Aliquot and store at -20°C. Minimize freezing and thawing.

### Applications Tested

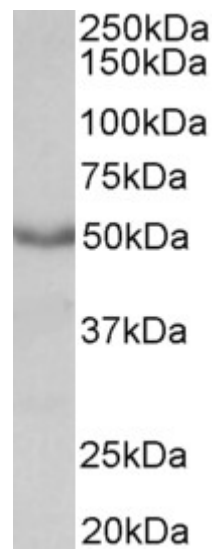
**Peptide ELISA:** antibody detection limit dilution 1:64000.

**Western blot:** Approx 50kDa band observed in Mouse Heart lysates (calculated MW of 51.4kDa according to NP\_000729.2). Recommended concentration: 0.3-1µg/ml.

### Species Reactivity

**Tested:** Mouse

**Expected from sequence similarity:** Human, Mouse, Rat, Dog



EB07398 (0.3 $\mu$ g/ml) staining of Mouse Heart lysate (35 $\mu$ g protein in RIPA buffer). Primary incubation was 1 hour.  
Detected by chemiluminescence.