



## International Office

### Everest Biotech Ltd

Vector Laboratories, Inc.  
6737 Mowry Ave  
Newark, CA 94560  
United States

Customer Service:

[customerservice@vectorlabs.com](mailto:customerservice@vectorlabs.com)

Technical Service:

[technical@vectorlabs.com](mailto:technical@vectorlabs.com)

Tel: +1 (800) 227-6666

[www.everestbiotech.com](http://www.everestbiotech.com)

**Research Use Only. Not for  
diagnostic or therapeutic use.**

## EB07730 - Goat Anti-M6prbp1 (mouse) Antibody

Size: 100µg specific antibody in 200µl



### Target Protein

**Principal Names:** M6prbp1, mannose-6-phosphate receptor binding protein 1, 1300012C15Rik

**Official Symbol:** Plin3

**Accession Number(s):** NP\_080112.1

**Non-Human GeneID(s):** 66905 (mouse), 316130 (rat)

### Immunogen

Peptide with sequence C-NQKTPQDAEKDPAK, from the internal region of the protein sequence according to NP\_080112.1.

Please note the [peptide](#) is available for sale.

### Purification and Storage

Purified from goat serum by ammonium sulphate precipitation followed by antigen affinity chromatography using the immunizing peptide.

Supplied at 0.5 mg/ml in Tris saline, 0.02% sodium azide, pH7.3 with 0.5% bovine serum albumin.

Aliquot and store at -20°C. Minimize freezing and thawing.

### Applications Tested

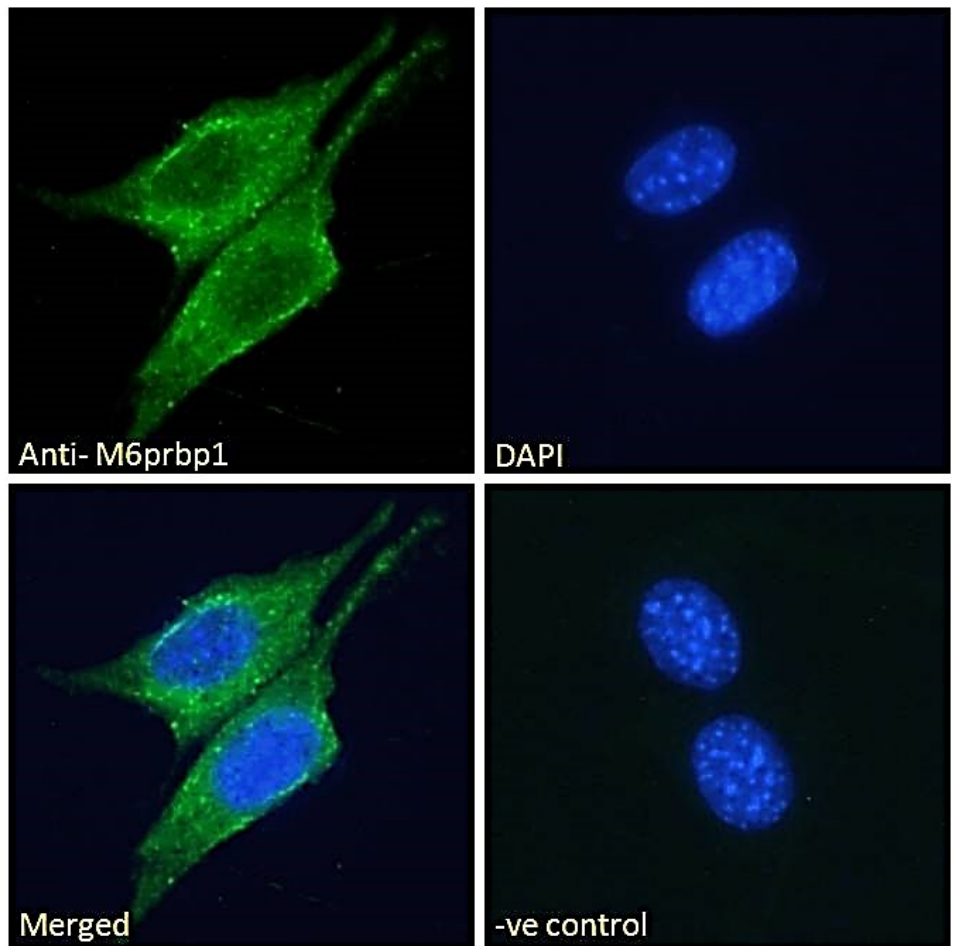
**Peptide ELISA:** antibody detection limit dilution 1:32000.

**Immunofluorescence:** Expression of the protein seen within lipid droplets and the cytoplasm of NIH3T3 cells. Recommended concentration: 10µg/ml.

### Species Reactivity

**Tested:** Mouse

**Expected from sequence similarity:** Mouse, Rat



EB07730 Immunofluorescence analysis of paraformaldehyde fixed NIH3T3 cells, permeabilized with 0.15% Triton. Primary incubation 1hr (10ug/ml) followed by Alexa Fluor 488 secondary antibody (2ug/ml), showing cytoplasmic and lipid droplet staining. The nuclear stain is DAPI (blue). Negative control: Unimmunized goat IgG (10ug/ml) followed by Alexa Fluor 488 secondary antibody (2ug/ml).