



UK Office

Everest Biotech Ltd

Cherwell Innovation Centre
77 Heyford Park
Upper Heyford
Oxfordshire
OX25 5HD
UK

Enquiries:

info@everestbiotech.com

Sales:

sales@everestbiotech.com

Tech support:

support@everestbiotech.com

Tel: +44 (0)1869 238326

Fax: +44 (0)1869 238327

US Office

Everest Biotech c/o Abcore

405 Maple Street, Suite A106
Ramona,
CA 92065
USA

Inquiries:

info@everestbiotech.com

Sales:

usasales@everestbiotech.com

Tech support:

support@everestbiotech.com

Tel: 888-320-4628 (toll-free)

Fax: 888-841-9041

www.everestbiotech.com

**Research Use Only. Not for
diagnostic or therapeutic use.**

EB05652 - Goat Anti-MAD4 / MXD4 Antibody

Size: 100µg specific antibody in 200µl



Target Protein

Principal Names: MXD4, MAD4, MAX dimerization protein 4, Mad4 homolog, MST149, MSTP149, bHLHc12

Official Symbol: MXD4

Accession Number(s): NP_006445.1

Human GeneID(s): [10608](#)

Immunogen

Peptide with sequence GPHCRRLGRPALS, from the C Terminus of the protein sequence according to NP_006445.1.

Please note the [peptide](#) is available for sale.

Purification and Storage

Purified from goat serum by ammonium sulphate precipitation followed by antigen affinity chromatography using the immunizing peptide.

Supplied at 0.5 mg/ml in Tris saline, 0.02% sodium azide, pH7.3 with 0.5% bovine serum albumin.

Aliquot and store at -20°C. Minimize freezing and thawing.

Applications Tested

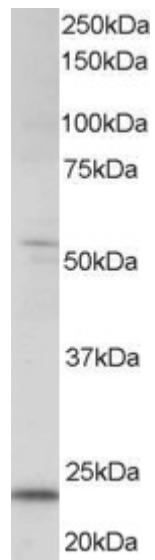
Peptide ELISA: antibody detection limit dilution 1:16000.

Western blot: Approx 22kDa band observed in human kidney lysates (predicted MW of 24kDa according to NP_006445). Recommended for use at 0.5-2µg/ml. Please note the appearance of this band was blocked by incubation with the immunising peptide.

Species Reactivity

Tested: Human

Expected from sequence similarity: Human



EB05652 staining (0.5 μ g/ml) of human kidney lysate (RIPA buffer, 35 μ g total protein per lane). Primary incubated for 1 hour. Detected by western blot using chemiluminescence.