



UK Office

Everest Biotech Ltd

Cherwell Innovation Centre
77 Heyford Park
Upper Heyford
Oxfordshire
OX25 5HD
UK

Enquiries:

info@everestbiotech.com

Sales:

sales@everestbiotech.com

Tech support:

support@everestbiotech.com

Tel: +44 (0)1869 238326

www.everestbiotech.com

**Research Use Only. Not for
diagnostic or therapeutic use.**

EB06078 - Goat Anti-MAML1 / Mastermind Antibody

Size: 100µg specific antibody in 200µl



Target Protein

Principal Names: MAML1, mastermind-like 1 (Drosophila), Mam1, Mam-1, KIAA0200, mastermind homolog, mastermind-like 1

Official Symbol: MAML1

Accession Number(s): NP_055572.1

Human GeneID(s): [9794](#)

Immunogen

Peptide with sequence VLPTCPMAEFALPR, from the N Terminus of the protein sequence according to NP_055572.1.

Please note the [peptide](#) is available for sale.

Purification and Storage

Purified from goat serum by ammonium sulphate precipitation followed by antigen affinity chromatography using the immunizing peptide.

Supplied at 0.5 mg/ml in Tris saline, 0.02% sodium azide, pH7.3 with 0.5% bovine serum albumin.

Aliquot and store at -20°C. Minimize freezing and thawing.

Applications Tested

Peptide ELISA: antibody detection limit dilution 1:128000.

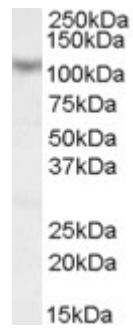
Western blot: Approx 110kDa band observed in Human Skeletal Muscle lysates (calculated MW of 108kDa according to NP_055572.1). Recommended concentration: 0.1-0.3µg/ml.

IHC: In paraffin embedded Human Placenta shows nuclear staining in trophoblasts. Recommended concentration, 2.5-3.8µg/ml.

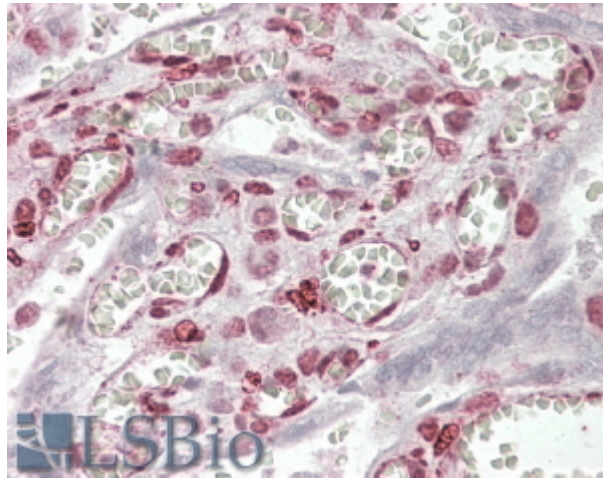
Species Reactivity

Tested: Human

Expected from sequence similarity: Human, Mouse



EB06078 (0.1 μ g/ml) staining of Human Skeletal Muscle lysate (35 μ g protein in RIPA buffer). Primary incubation was 1 hour. Detected by chemiluminescence.



EB06078 (3.8 μ g/ml) staining of paraffin embedded Human Placenta. Steamed antigen retrieval with citrate buffer pH 6, AP-staining.