



UK Office

Everest Biotech Ltd

Cherwell Innovation Centre
77 Heyford Park
Upper Heyford
Oxfordshire
OX25 5HD
UK

Enquiries:

info@everestbiotech.com

Sales:

sales@everestbiotech.com

Tech support:

support@everestbiotech.com

Tel: +44 (0)1869 238326

Fax: +44 (0)1869 238327

US Office

Everest Biotech c/o Abcore

405 Maple Street, Suite A106
Ramona,
CA 92065
USA

Inquiries:

info@everestbiotech.com

Sales:

usasales@everestbiotech.com

Tech support:

support@everestbiotech.com

Tel: 888-320-4628 (toll-free)

Fax: 888-841-9041

www.everestbiotech.com

**Research Use Only. Not for
diagnostic or therapeutic use.**

EB08228 - Goat Anti-MAN2A1 Antibody

Size: 100µg specific antibody in 200µl



Target Protein

Principal Names: MAN2A1, mannosidase, alpha, class 2A, member 1, GOLIM7, MANA2, MANII, Golgi alpha-mannosidase II, golgi integral membrane protein 7, mannosidase, alpha type II, mannosyl-oligosaccharide 1,3-1,6-alpha-mannosidase

Official Symbol: MAN2A1

Accession Number(s): NP_002363.2

Human GeneID(s): [4124](#)

Immunogen

Peptide with sequence C-KISSDIKSQNR, from the internal region of the protein sequence according to NP_002363.2.

Please note the [peptide](#) is available for sale.

Purification and Storage

Purified from goat serum by ammonium sulphate precipitation followed by antigen affinity chromatography using the immunizing peptide.

Supplied at 0.5 mg/ml in Tris saline, 0.02% sodium azide, pH7.3 with 0.5% bovine serum albumin.

Aliquot and store at -20°C. Minimize freezing and thawing.

Applications Tested

Peptide ELISA: antibody detection limit dilution 1:16000.

Western blot: Approx. 150kDa band observed in Human Placenta lysates (calculated MW of 131kDa according to NP_002363.2). In transfected HEK293 transiently expressing MAN2A1 a band of approx. 98kDa is observed. This band is not observed in the non-transfected HEK293. Recommended concentration: 1-3µg/ml. An anonymous customer found positive results in WB on Human dermal fibroblasts.

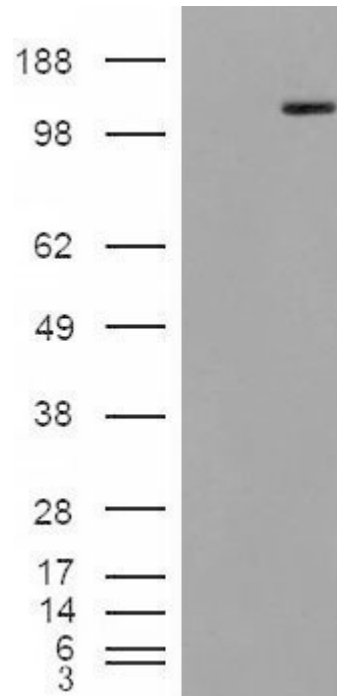
Species Reactivity

Tested: Human

Expected from sequence similarity: Human



EB08228 (0.3µg/ml) staining of Human Placenta lysate (35µg protein in RIPA buffer). Primary incubation was 1 hour. Detected by chemiluminescence.



HEK293 overexpressing Man2A1 (RC220186) and probed with EB08228 (mock transfection in first lane), tested by Origene.