



## UK Office

### Everest Biotech Ltd

Cherwell Innovation Centre  
77 Heyford Park  
Upper Heyford  
Oxfordshire  
OX25 5HD  
UK

Enquiries:

[info@everestbiotech.com](mailto:info@everestbiotech.com)

Sales:

[sales@everestbiotech.com](mailto:sales@everestbiotech.com)

Tech support:

[support@everestbiotech.com](mailto:support@everestbiotech.com)

Tel: +44 (0)1869 238326

[www.everestbiotech.com](http://www.everestbiotech.com)

**Research Use Only. Not for  
diagnostic or therapeutic use.**

## EB11527 - Goat Anti-Manic Fringe Antibody

Size: 100µg specific antibody in 200µl



### Target Protein

**Principal Names:** beta-1,3-N-acetylglucosaminyltransferase manic fringe, MFNG, MFNG  
O-fucosylpeptide 3-beta-N-acetylglucosaminyltransferase, O-fucosylpeptide  
3-beta-N-acetylglucosaminyltransferase, OTTHUMP00000197828

**Official Symbol:** MFNG

**Accession Number(s):** NP\_002396.2; NP\_001159815.1

**Human GeneID(s):** [4242](#)

**Important Comments:** This antibody is expected to recognize isoform 1 (NP\_002396.2).

### Immunogen

Peptide with sequence C-NRPIHASEPQPHNRT, from the internal region of the protein  
sequence according to NP\_002396.2; NP\_001159815.1.

Please note the [peptide](#) is available for sale.

### Purification and Storage

Purified from goat serum by ammonium sulphate precipitation followed by antigen affinity  
chromatography using the immunizing peptide.

Supplied at 0.5 mg/ml in Tris saline, 0.02% sodium azide, pH7.3 with 0.5% bovine serum  
albumin.

Aliquot and store at -20°C. Minimize freezing and thawing.

### Applications Tested

**Peptide ELISA:** antibody detection limit dilution 1:8000.

**IHC:** In paraffin embedded Human Cerebral Cortex shows Golgi-type staining in neuronal  
bodies. Recommended concentration: 2-4µg/ml.

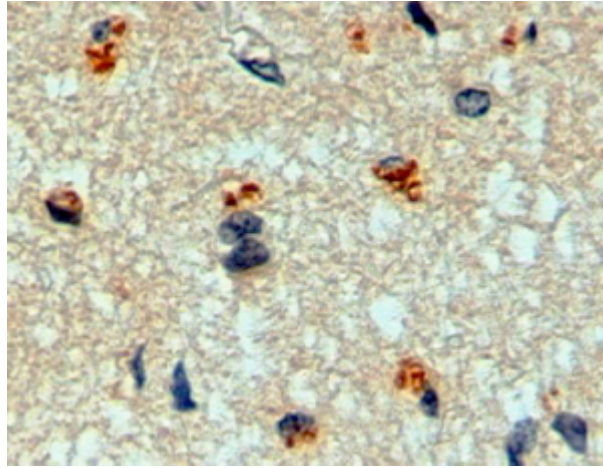
**Immunofluorescence:** Strong expression of the protein seen in the Golgi of U2OS cells.  
Recommended concentration: 10µg/ml.

**Flow Cytometry:** Flow cytometric analysis of U2OS cells. Recommended concentration:  
10ug/ml.

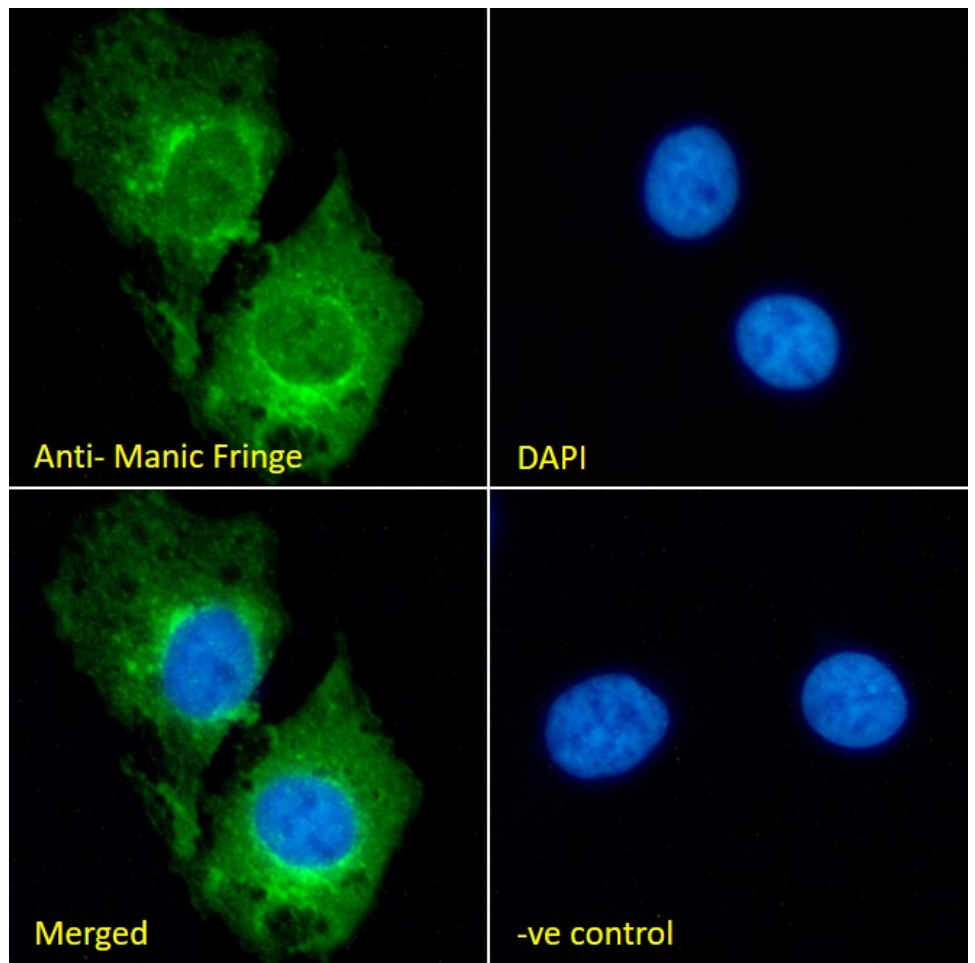
### Species Reactivity

**Tested:** Human

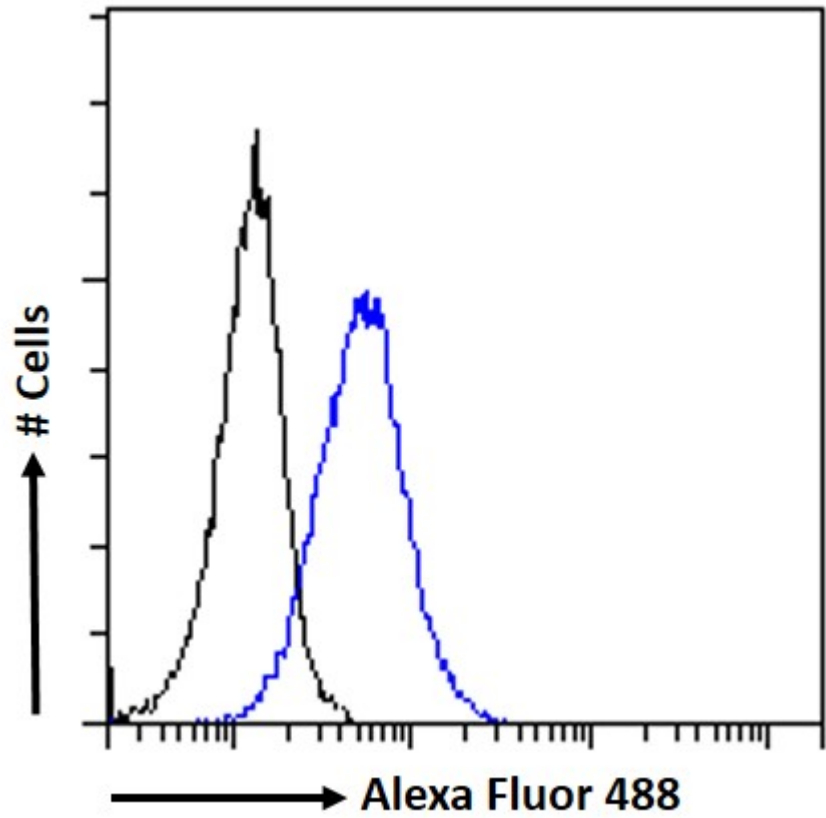
**Expected from sequence similarity:** Human, Cow



EB11527 (2µg/ml) staining of paraffin embedded Human Cerebral Cortex. Steamed antigen retrieval with Tris/EDTA buffer pH 9, HRP-staining.



EB11527 Immunofluorescence analysis of paraformaldehyde fixed U2OS cells, permeabilized with 0.15% Triton. Primary incubation 1hr (10ug/ml) followed by Alexa Fluor 488 secondary antibody (2ug/ml), showing Golgi staining. The nuclear stain is DAPI (blue). Negative control: Unimmunized goat IgG (10ug/ml) followed by Alexa Fluor 488 secondary antibody (2ug/ml).



EB11527 Flow cytometric analysis of paraformaldehyde fixed U2OS cells (blue line), permeabilized with 0.5% Triton. Primary incubation 1hr (10ug/ml) followed by Alexa Fluor 488 secondary antibody (1ug/ml). IgG control: Unimmunized goat IgG (black line) followed by Alexa Fluor 488 secondary antibody.