



International Office

Everest Biotech Ltd

Vector Laboratories, Inc.
6737 Mowry Ave
Newark, CA 94560
United States

Customer Service:

customerservice@vectorlabs.com

Technical Service:

technical@vectorlabs.com

Tel: +1 (800) 227-6666

www.everestbiotech.com

**Research Use Only. Not for
diagnostic or therapeutic use.**

EB09916 - Goat Anti-MAP3K7IP2 Antibody

Size: 100µg specific antibody in 200µl



Target Protein

Principal Names: FLJ21885, KIAA0733, mitogen-activated protein kinase kinase kinase 7 interacting protein 2, OTTHUMP00000017388, TAB2, TAK1-binding protein 2, MAP3K7IP2

Official Symbol: MAP3K7IP2

Accession Number(s): NP_055908.1

Human GeneID(s): [23118](#)

Non-Human GeneID(s): 68652 (mouse), 308267 (rat)

Immunogen

Peptide with sequence C-SKGTSSLSQQTPR, from the internal region of the protein sequence according to NP_055908.1.

Please note the [peptide](#) is available for sale.

Purification and Storage

Purified from goat serum by ammonium sulphate precipitation followed by antigen affinity chromatography using the immunizing peptide.

Supplied at 0.5 mg/ml in Tris saline, 0.02% sodium azide, pH7.3 with 0.5% bovine serum albumin.

Aliquot and store at -20°C. Minimize freezing and thawing.

Applications Tested

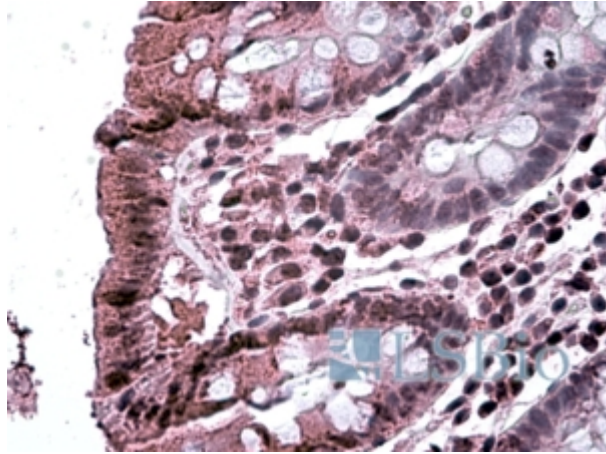
Peptide ELISA: antibody detection limit dilution 1:32000.

IHC: In paraffin embedded Human Colon shows distinct staining of cytoplasm in epithelial cells and nuclear staining in the lamina propria. Recommended concentration, 3-6µg/ml.

Species Reactivity

Tested: Human

Expected from sequence similarity: Human, Mouse, Rat, Dog, Cow



EB09916 (3.8µg/ml) staining of paraffin embedded Human Colon. Steamed antigen retrieval with citrate buffer pH 6, AP-staining.