



UK Office

Everest Biotech Ltd

Cherwell Innovation Centre
77 Heyford Park
Upper Heyford
Oxfordshire
OX25 5HD
UK

Enquiries:

info@everestbiotech.com

Sales:

sales@everestbiotech.com

Tech support:

support@everestbiotech.com

Tel: +44 (0)1869 238326

Fax: +44 (0)1869 238327

US Office

Everest Biotech c/o Abcore

405 Maple Street, Suite A106
Ramona,
CA 92065
USA

Inquiries:

info@everestbiotech.com

Sales:

usasales@everestbiotech.com

Tech support:

support@everestbiotech.com

Tel: 888-320-4628 (toll-free)

Fax: 888-841-9041

www.everestbiotech.com

**Research Use Only. Not for
diagnostic or therapeutic use.**

EB11390 - Goat Anti-MAPK9 / JNK2 alpha (aa217-230) Antibody

Size: 100µg specific antibody in 200µl



Target Protein

Principal Names: c-Jun kinase 2, c-Jun N-terminal kinase 2, JNK2, JNK2A, JNK2ALPHA, JNK2B, JNK2BETA, JNK-55, Jun kinase, MAP kinase 9, MAPK 9, mitogen-activated protein kinase 9, OTTHUMP00000161542, OTTHUMP00000161543, p54a, p54aSAPK, PRKM9, SAPK, stress-activated protein kinase JNK2, MAPK9

Official Symbol: MAPK9

Accession Number(s): NP_620707.1; NP_002743.3; NP_001128516.1

Human GeneID(s): [5601](#)

Non-Human GeneID(s): 26420 (mouse), 50658 (rat)

Important Comments: This antibody is expected to recognize isoforms alpha1, alpha 2, and gamma (NP_620707.1; NP_002743.3; NP_001128516.1).

Immunogen

Peptide with sequence ELVKGCVIFQGTDH, from the internal region of the protein sequence according to NP_620707.1; NP_002743.3; NP_001128516.1.

Please note the [peptide](#) is available for sale.

Purification and Storage

Purified from goat serum by ammonium sulphate precipitation followed by antigen affinity chromatography using the immunizing peptide.

Supplied at 0.5 mg/ml in Tris saline, 0.02% sodium azide, pH7.3 with 0.5% bovine serum albumin.

Aliquot and store at -20°C. Minimize freezing and thawing.

Applications Tested

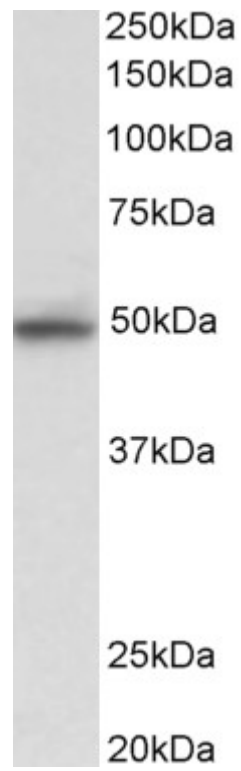
Peptide ELISA: antibody detection limit dilution 1:16000.

Western blot: Approx 48kDa band observed in lysates of cell line HeLa (calculated MW of 48.1kDa according to NP_002743.3). Recommended concentration: 0.03-0.1µg/ml.

Species Reactivity

Tested: Human

Expected from sequence similarity: Human, Mouse, Rat, Dog



EB11390 (0.03 μ g/ml) staining of HeLa lysate (35 μ g protein in RIPA buffer). Primary incubation was 1 hour.
Detected by chemiluminescence.