



UK Office

Everest Biotech Ltd

Cherwell Innovation Centre
77 Heyford Park
Upper Heyford
Oxfordshire
OX25 5HD
UK

Enquiries:

info@everestbiotech.com

Sales:

sales@everestbiotech.com

Tech support:

support@everestbiotech.com

Tel: +44 (0)1869 238326

Fax: +44 (0)1869 238327

US Office

Everest Biotech c/o Abcore

405 Maple Street, Suite A106
Ramona,
CA 92065
USA

Inquiries:

info@everestbiotech.com

Sales:

usasales@everestbiotech.com

Tech support:

support@everestbiotech.com

Tel: 888-320-4628 (toll-free)

Fax: 888-841-9041

www.everestbiotech.com

**Research Use Only. Not for
diagnostic or therapeutic use.**

EB08235 - Goat Anti-MARCH10 Antibody

Size: 100µg specific antibody in 200µl



Target Protein

Principal Names: MARCH10, membrane-associated ring finger (C3HC4) 10, FLJ35757, MARCH-X, RNF190, ring finger protein 190

Official Symbol: MARCH10

Accession Number(s): NP_001094345.1; NP_689811.2

Human GeneID(s): [162333](#)

Non-Human GeneID(s): 303596 (rat)

Important Comments: This antibody is expected to recognise both reported isoforms (NP_001094345.1; NP_689811.2), which are identical.

Immunogen

Peptide with sequence C-SRNYPQPRTEE, from the internal region of the protein sequence according to NP_001094345.1; NP_689811.2.

Please note the [peptide](#) is available for sale.

Purification and Storage

Purified from goat serum by ammonium sulphate precipitation followed by antigen affinity chromatography using the immunizing peptide.

Supplied at 0.5 mg/ml in Tris saline, 0.02% sodium azide, pH7.3 with 0.5% bovine serum albumin.

Aliquot and store at -20°C. Minimize freezing and thawing.

Applications Tested

Peptide ELISA: antibody detection limit dilution 1:8000.

Western blot: Approx. 90 kDa band observed in Rat Testis lysates (calculated MW of 90.5 kDa according to Human NP_689811.2 and of 87.9 kDa according to Mouse NP_766156.2). Recommended concentration: 0.3-1µg/ml. Primary incubation was 1 hour.

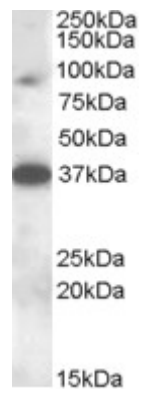
An additional band of unknown identity was also consistently observed at 37 kDa. This band was successfully blocked by incubation with the immunising peptide.

IHC: Paraffin embedded Human Testis. Recommended concentration: 5µg/ml.

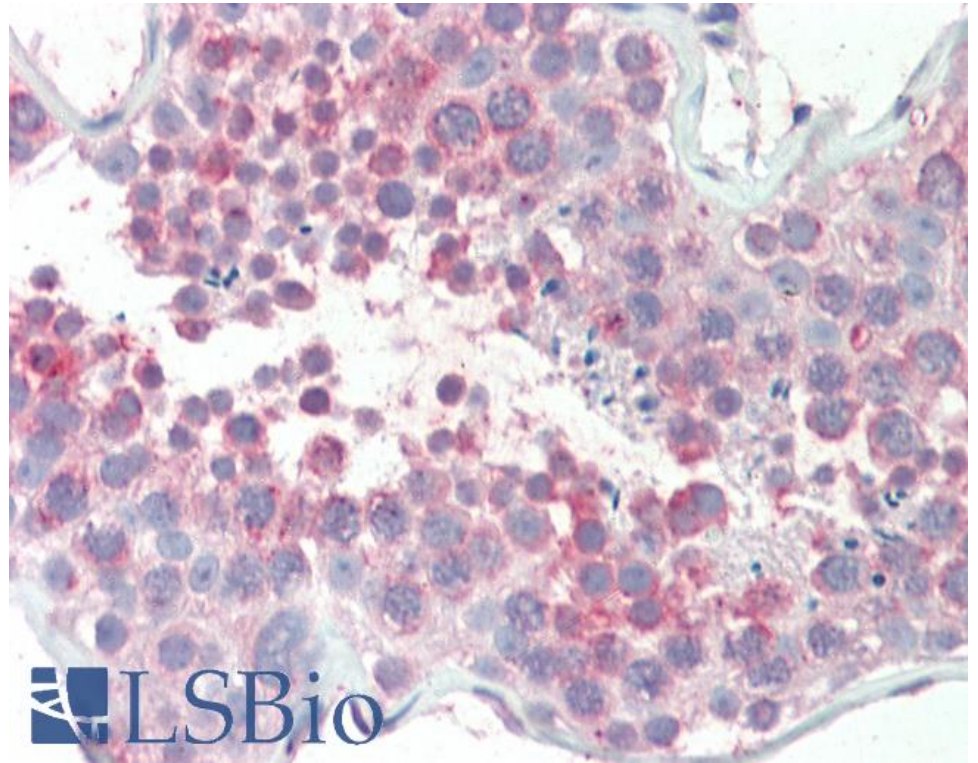
Species Reactivity

Tested: Human, Rat

Expected from sequence similarity: Human, Rat, Cow



EB08235 (0.3µg/ml) staining of Rat Testis lysate (35µg protein in RIPA buffer). Detected by chemiluminescence.



EB08235 (5µg/ml) staining of paraffin embedded Human Testis. Steamed antigen retrieval with citrate buffer pH 6, AP-staining.