

UK Office

Everest Biotech Ltd

Cherwell Innovation Centre
77 Heyford Park
Upper Heyford
Oxfordshire
OX25 5HD
UK

Enquiries:

info@everestbiotech.com

Sales:

sales@everestbiotech.com

Tech support:

support@everestbiotech.com

Tel: +44 (0)1869 238326

www.everestbiotech.com

**Research Use Only. Not for
diagnostic or therapeutic use.**

EB05383 - Goat Anti-MARK4L Antibody

Size: 100µg specific antibody in 200µl



Target Protein

Principal Names: MARK4, MAP/microtubule affinity-regulating kinase 4, MARKL1, KIAA1860, Nbla00650, MARK4 serine/threonine protein kinase, MAP/microtubule affinity-regulating kinase like 1, FLJ90097, putative protein product of Nbla00650

Official Symbol: MARK4

Accession Number(s): NP_113605.2

Human GeneID(s): [57787](#)

Important Comments: This antibody is expected to recognize the reported long isoform 1 (NP_113605.2) only.

Immunogen

Peptide with sequence IKRKPPPGCSDSPGV, from the C Terminus of the protein sequence according to NP_113605.2.

Please note the [peptide](#) is available for sale.

Purification and Storage

Purified from goat serum by ammonium sulphate precipitation followed by antigen affinity chromatography using the immunizing peptide.

Supplied at 0.5 mg/ml in Tris saline, 0.02% sodium azide, pH7.3 with 0.5% bovine serum albumin.

Aliquot and store at -20°C. Minimize freezing and thawing.

Applications Tested

Peptide ELISA: antibody detection limit dilution 1:128000.

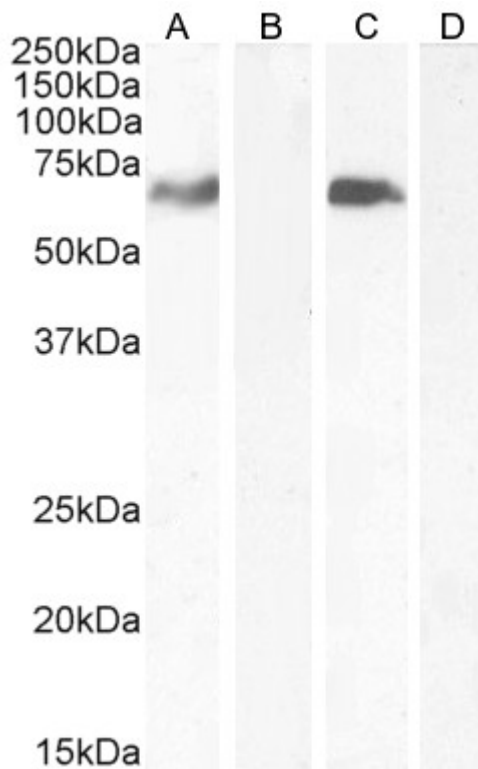
Western blot: Approx 70kDa band observed in Human Prostate lysates (calculated MW of 75.3kDa according to NP_113605.2). Recommended concentration: 0.3-1µg/ml.

Flow Cytometry: Flow cytometric analysis of A431 cells. Recommended concentration: 10ug/ml.

Species Reactivity

Tested: Human, Mouse

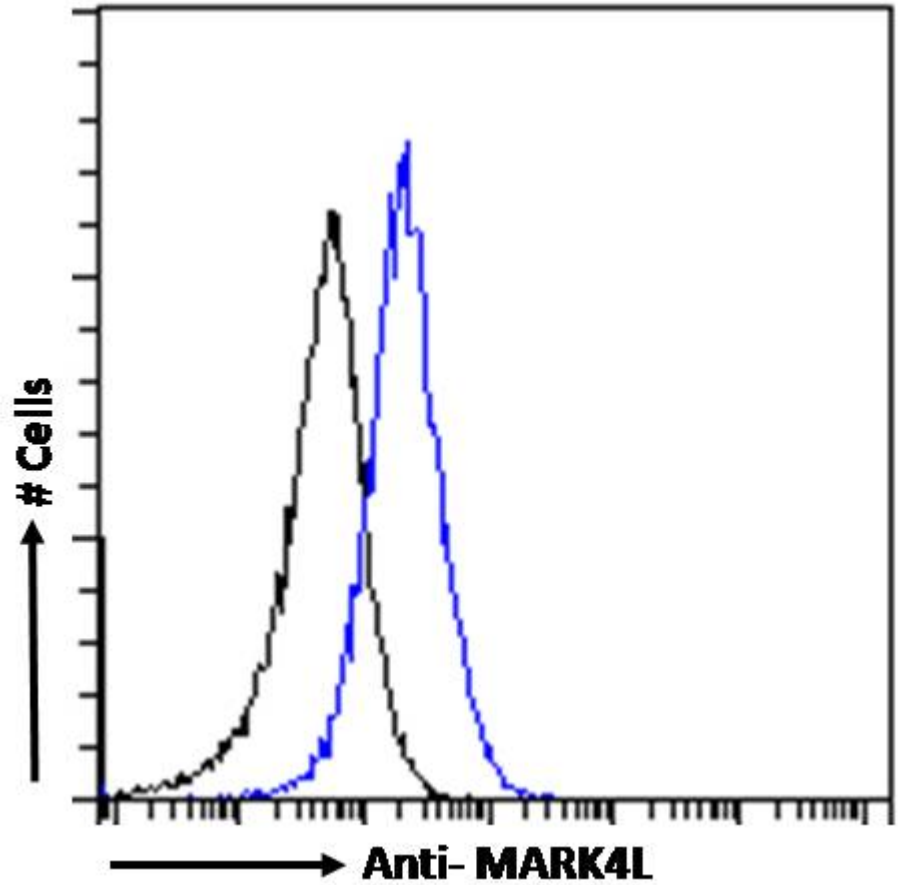
Expected from sequence similarity: Human, Mouse



EB05383 (0.3 μ g/ml) staining of Human Cerebellum lysate (A) + peptide (B), Mouse Brain lysate (C) + peptide (D). (35 μ g protein in RIPA buffer). Detected by chemiluminescence.



EB05383 (1 μ g/ml) staining of U251 cell lysate (35 μ g protein in RIPA buffer). Detected by chemiluminescence.



EB05383 Flow cytometric analysis of paraformaldehyde fixed A431 cells (blue line), permeabilized with 0.5% Triton. Primary incubation 1hr (10ug/ml) followed by Alexa Fluor 488 secondary antibody (1ug/ml). IgG control: Unimmunized goat IgG (black line) followed by Alexa Fluor 488 secondary antibody.